

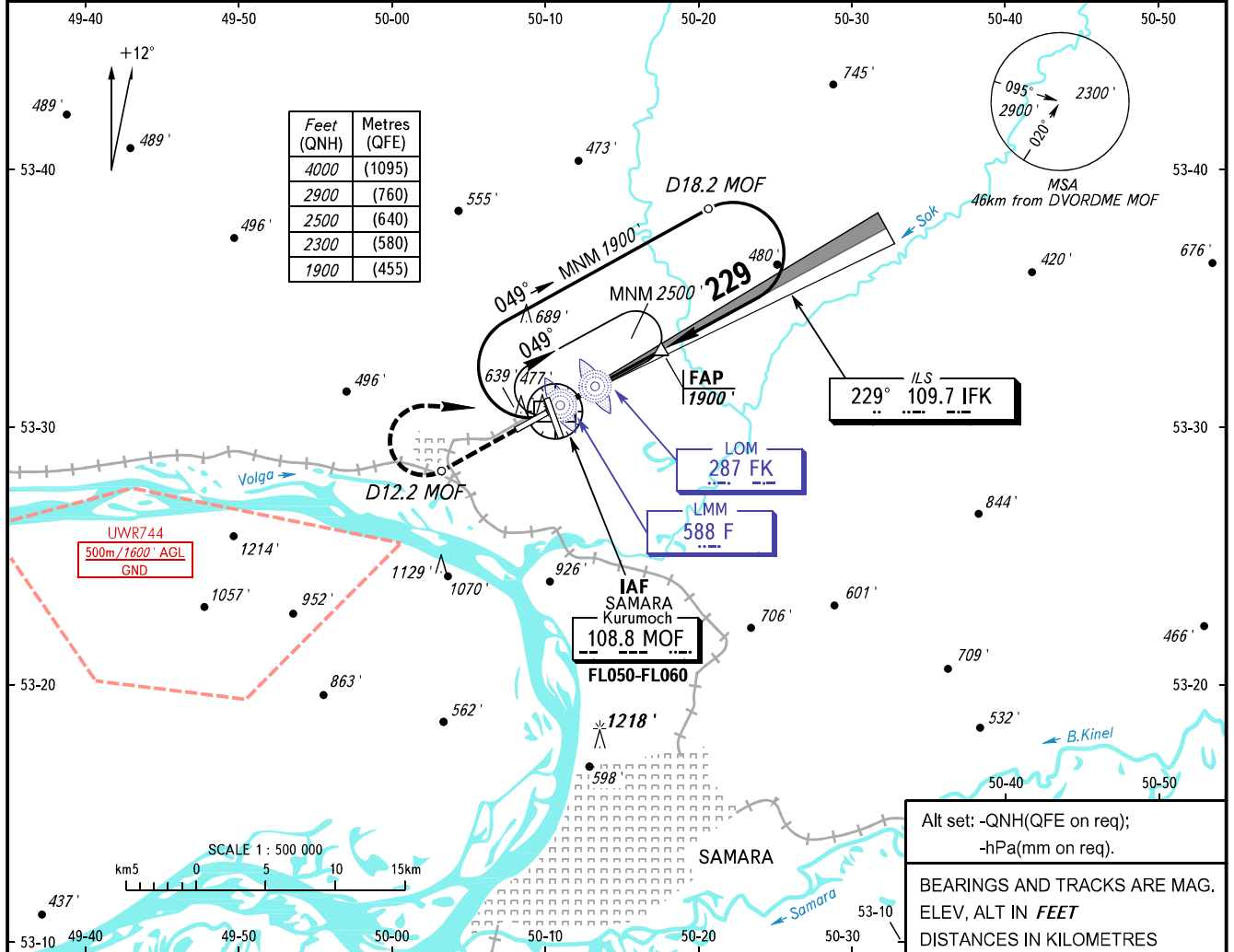
**INSTRUMENT
APPROACH
CHART - ICAO**

**SAMARA, RUSSIA
KURUMOCH
ILS Y RWY 23 CAT I**

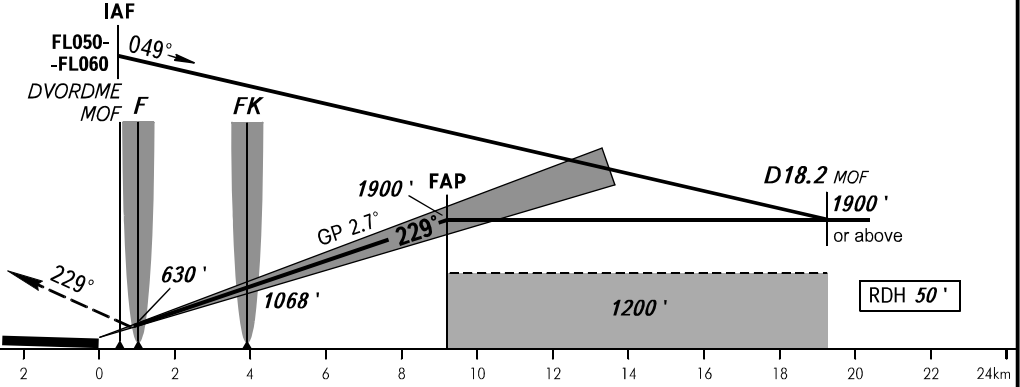
RADAR	128.000
TOWER	118.200

TRANSITION LEVEL: **1**
TRANSITION ALTITUDE: 4000'

AD ELEV: 477'
THR ELEV: 412'



MISSED APPROACH
Climb on track 229° to D12.2 MOF, turn RIGHT to DVORDME MOF climbing to 2500' or by ATS unit instruction, then according to chart or to holding area.



OCA(H)		A	B	C	D	DL					
Straight-in	CAT I	560' (150')	570' (160')	580' (170')	592' (182')	595' (185')					
	Approach										
Circling		940' (460')	980' (500')	1090' (610')	1220' (740')	1220' (740')					
GROUND SPEED		km/h	150	180	210	240	270	300	330	360	390
RATE OF DESCENT		m/s	2.0	2.4	2.7	3.1	3.5	3.9	4.3	4.7	5.1
		ft/min	385	463	540	617	694	771	848	925	1002

1 TRANSITION LEVEL:
- FL050 when QNH is 1013 hPa (760mm mercury column) or above;
- FL060 when QNH is 977 hPa (733mm mercury column) or above, but less than 1013 hPa (760mm mercury column);
- FL070 when QNH is less than 977 hPa (733mm mercury column).