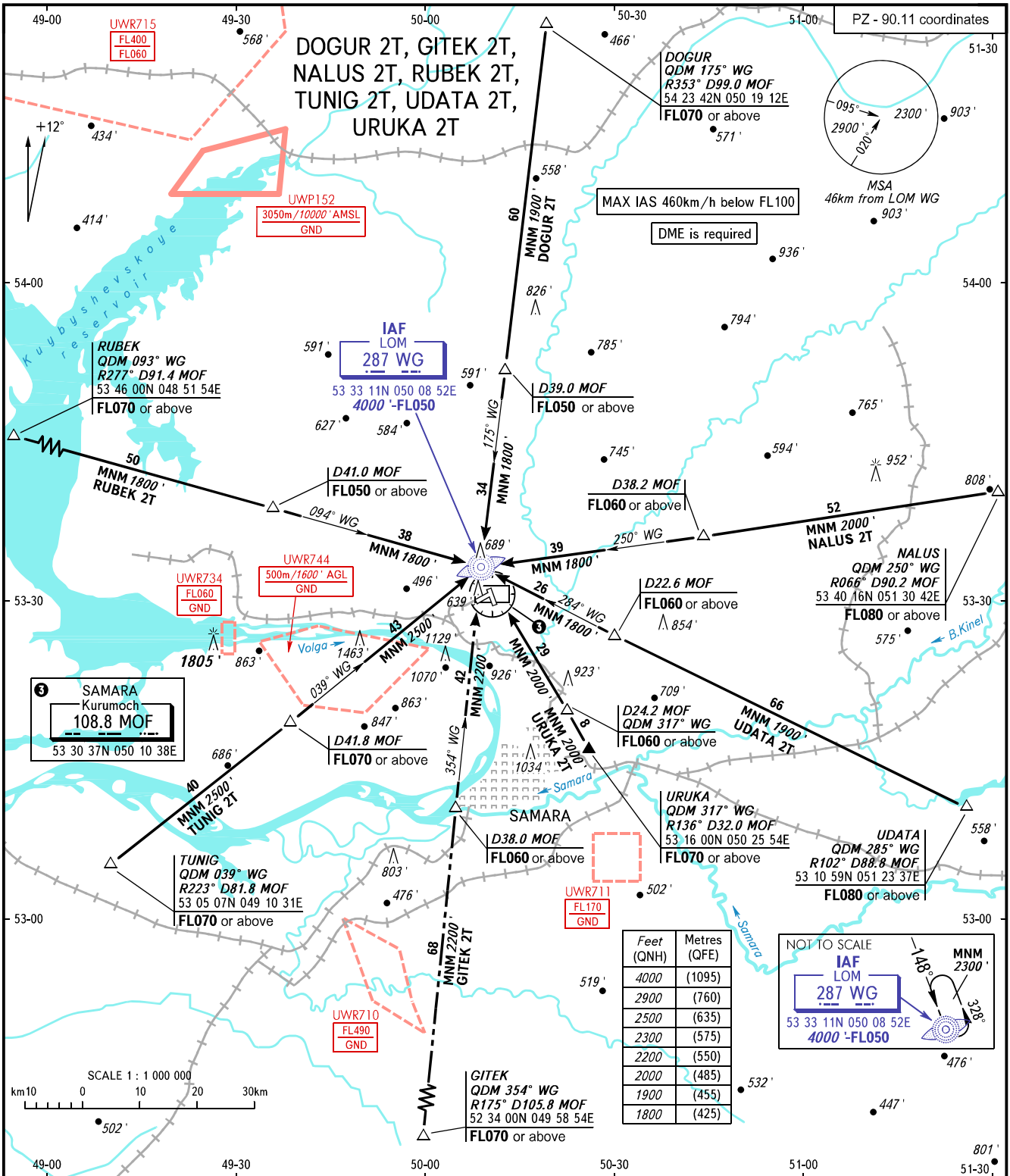


STANDARD ARRIVAL CHART
INSTRUMENT (STAR) - ICAO

SAMARA, RUSSIA
KURUMOCH
RWY 15

TRANSITION
LEVEL: 1



3 SAMARA
Kurumoch
108.8 MOF
53 30 37N 050 10 38E

Feet (QNH)	Metres (QFE)
4000	(1095)
2900	(760)
2500	(635)
2300	(575)
2200	(550)
2000	(485)
1900	(455)
1800	(425)

NOT TO SCALE
IAF LOM
287 WG
53 33 11N 050 08 52E
4000 -FL050

APPROACH 124.600
RADAR 128.000
TOWER 118.200

1 TRANSITION LEVEL:
- FL050 when QNH is 1013 hPa (760mm mercury column) or above;
- FL060 when QNH is 977 hPa (733mm mercury column) or above,
but less than 1013 hPa (760mm mercury column);
- FL070 when QNH is less than 977 hPa (733mm mercury column).

BEARINGS AND TRACKS ARE MAGNETIC
ALTITUDES AND ELEVATIONS IN FEET
DISTANCES IN KILOMETRES

CHANGE: New chart