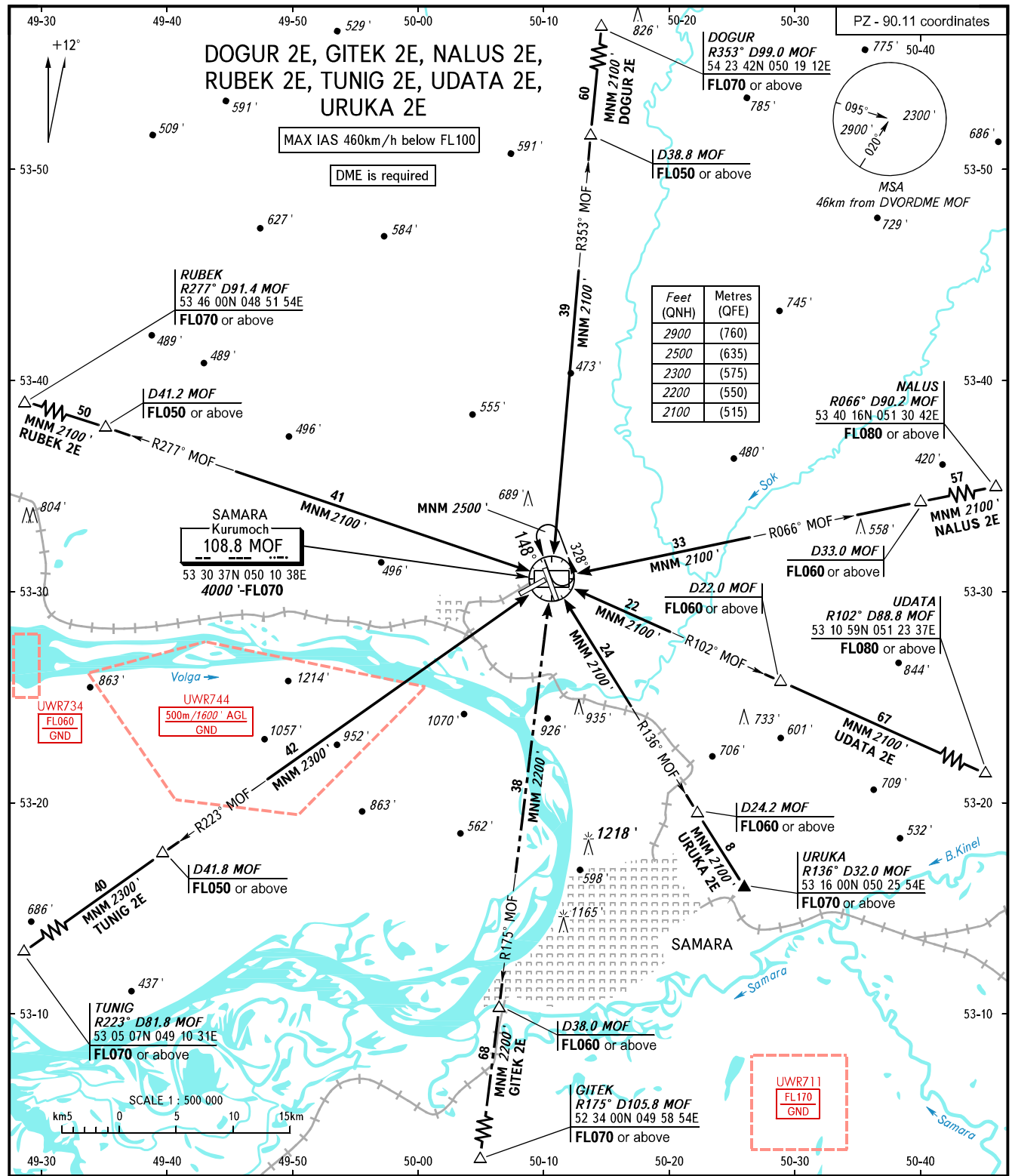


STANDARD ARRIVAL CHART
INSTRUMENT (STAR) - ICAO

SAMARA, RUSSIA
KURUMOCH
RWY 15

TRANSITION
LEVEL: ①



APPROACH	124.600
RADAR	128.000
TOWER	118.200

① TRANSITION LEVEL:
 - FL050 when QNH is 1013 hPa (760mm mercury column) or above;
 - FL060 when QNH is 977 hPa (733mm mercury column) or above, but less than 1013 hPa (760mm mercury column);
 - FL070 when QNH is less than 977 hPa (733mm mercury column).

BEARINGS AND TRACKS ARE MAGNETIC
 ALTITUDES AND ELEVATIONS IN FEET
 DISTANCES IN KILOMETRES

CHANGE: New chart