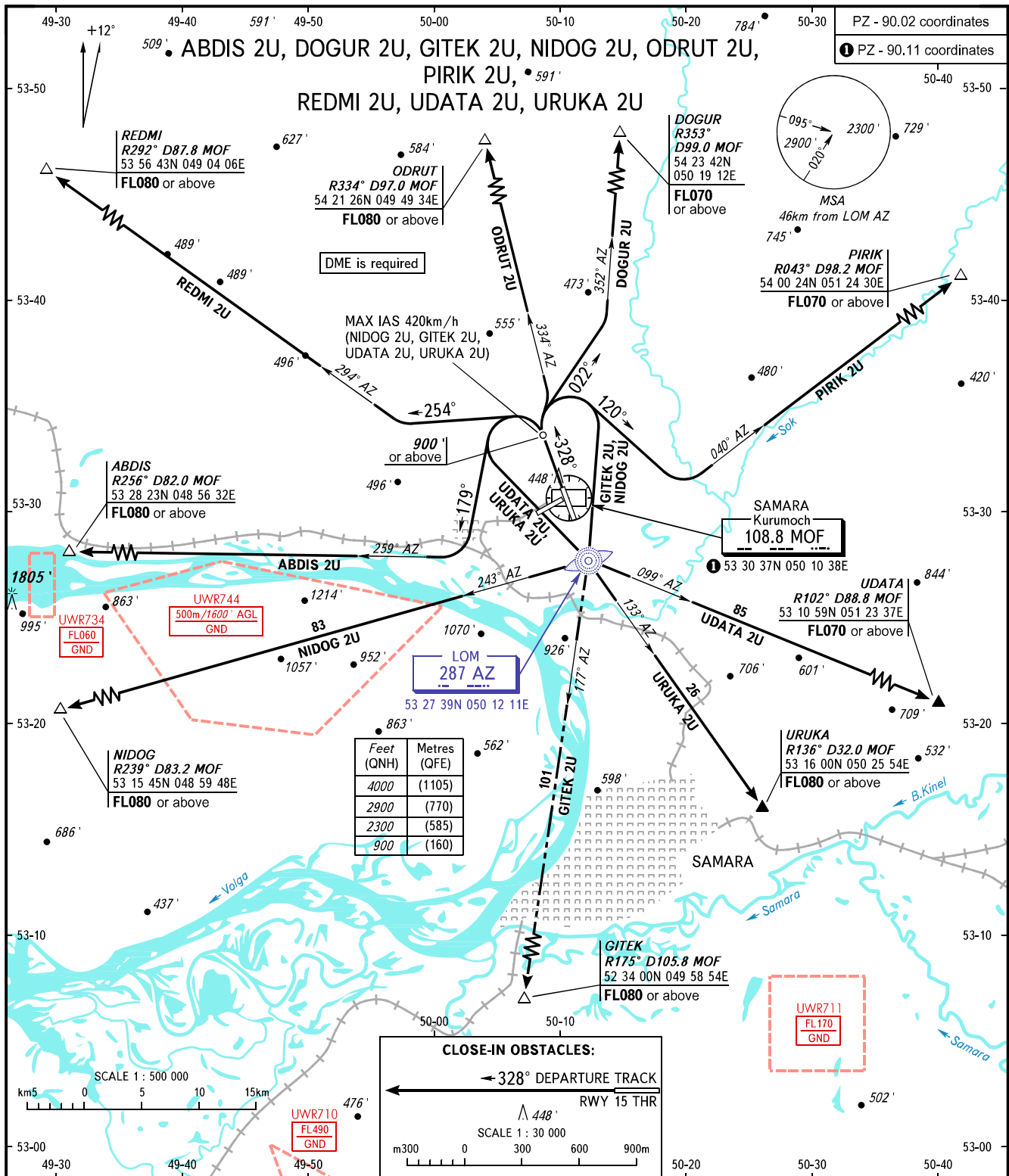


STANDARD DEPARTURE CHART  
INSTRUMENT (SID) - ICAO

TRANSITION  
ALTITUDE: 4000'

SAMARA, RUSSIA  
KURUMOCH  
RWY 33



TOWER 118.200  
RADAR 128.000  
APPROACH 124.600

- WARNING:**
- There are close-in obstacles.
  - Turn before DER is PROHIBITED.
  - MNM climb gradient due to the airspace structure:
    - 4.9% up to FL060 for ABDIS 2U;
    - 3.6% up to FL050 for DOGUR 2U;
    - 4.9% up to 3300' for GITEK 2U;
    - 4.9% up to 4900' for NIDOG 2U;
    - 3.8% up to FL100 for ODRUT 2U;
    - 3.4% up to FL050 for REDMI 2U;
    - 4.4% up to FL080 for URUKA 2U;
    - 3.8% up to FL060 for UDATA 2U.

BEARINGS AND TRACKS ARE MAGNETIC  
ALTITUDES AND ELEVATIONS IN FEET  
DISTANCES IN KILOMETRES

CHANGE: New chart