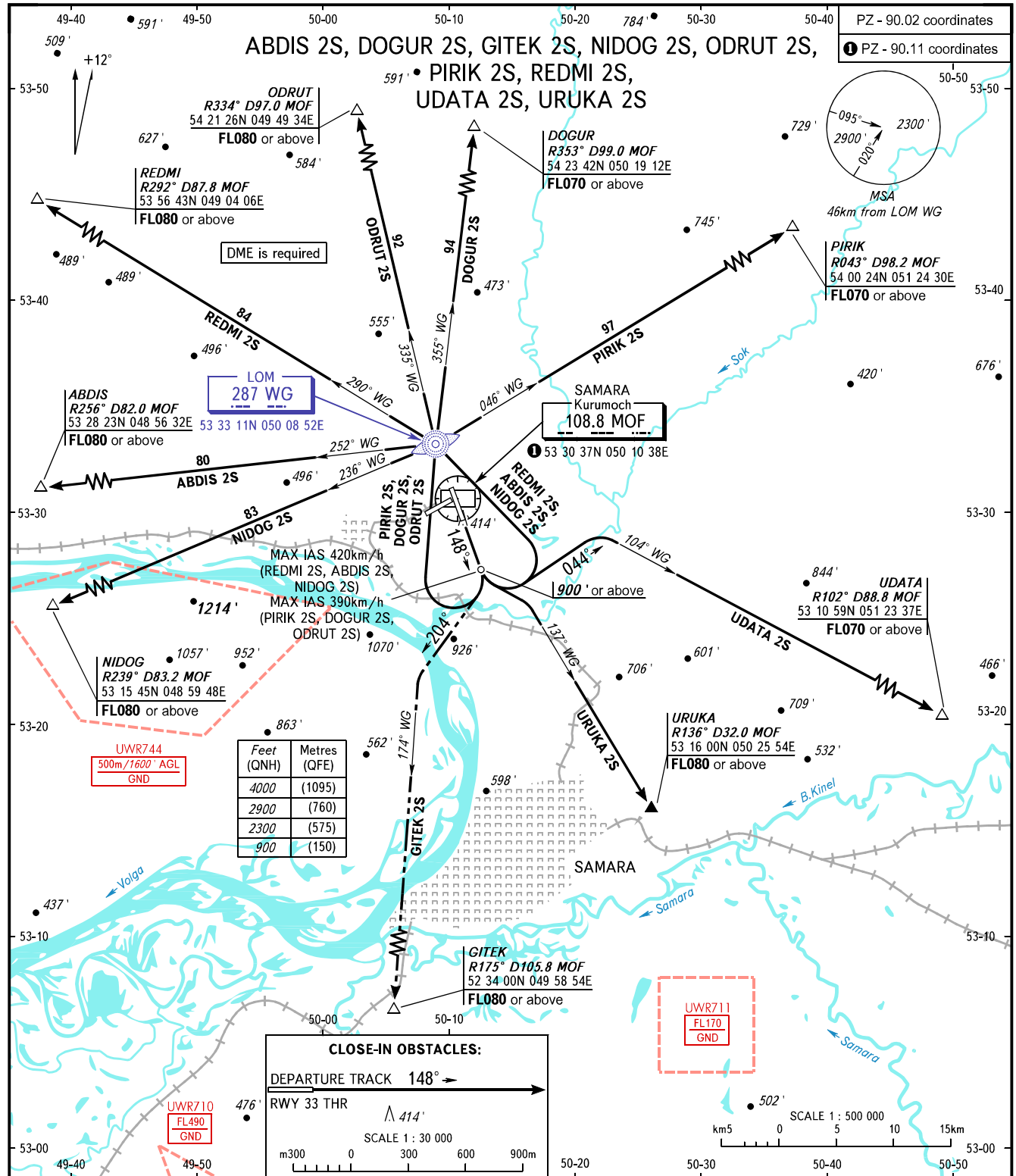


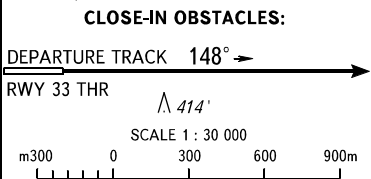
STANDARD DEPARTURE CHART  
INSTRUMENT (SID) - ICAO

SAMARA, RUSSIA  
KURUMOCH  
RWY 15

TRANSITION  
ALTITUDE: 4000'



Feet (QNH)	Metres (QFE)
4000	(1095)
2900	(760)
2300	(575)
900	(150)



UWR711  
FL170  
GND

TOWER 118.200  
RADAR 128.000  
APPROACH 124.600

- WARNING:**
- There are close-in obstacles.
  - Turn before DER is PROHIBITED.
  - MNM climb gradient due to the airspace structure:
    - 4.1% up to 6900' for ABDIS 2S;
    - 4.7% up to FL060 for GITEK 2S;
    - 4.1% up to 6900' for NIDOG 2S;
    - 3.5% up to 6400' for ODRUT S;
    - 7.7% up to FL080 for URUKA 2S;
    - 6.8% up to FL060 for UDATA 2S.

BEARINGS AND TRACKS ARE MAGNETIC  
ALTITUDES AND ELEVATIONS IN FEET  
DISTANCES IN KILOMETRES

CHANGE: New chart