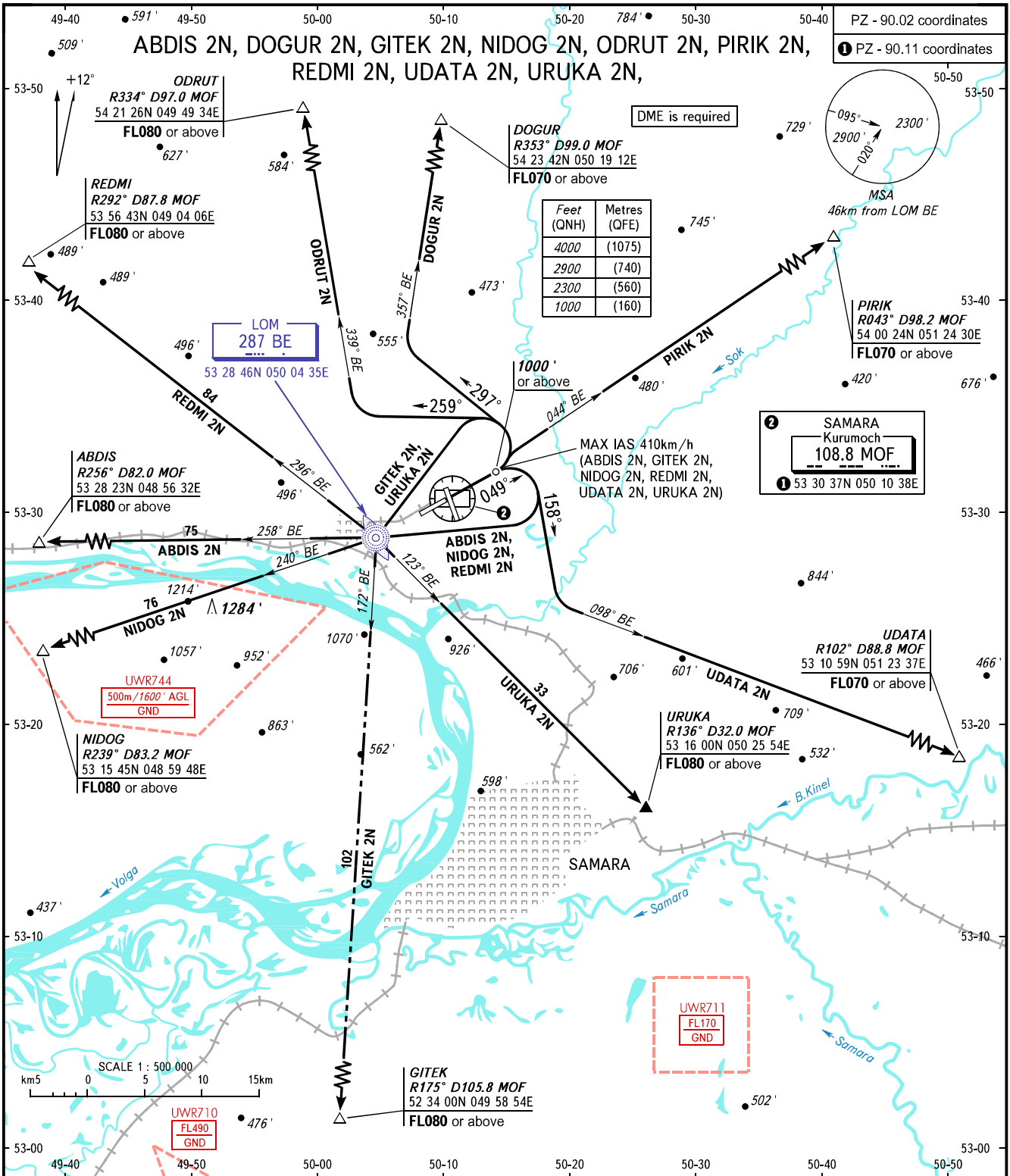


STANDARD DEPARTURE CHART  
INSTRUMENT (SID) - ICAO

TRANSITION  
ALTITUDE: 4000'

SAMARA, RUSSIA  
KURUMOCH  
RWY 05



TOWER 118.200  
RADAR 128.000  
APPROACH 124.600

**WARNING:**  
1. Turn before DER is PROHIBITED.  
2. MNM climb gradient due to the airspace structure:  
- 4.9% up to 4600' for ABDIS 2N ;  
- 4.9% up to 3200' for GITEK 2N;  
- 4.9% up to 4600' for NIDOG 2N;  
- 3.6% up to 9200' for ODRUT 2N;  
- 3.6% up to FL050 for PIRIK 2N;  
- 4.9% up to 3200' for REDMI 2N;  
- 4.9% up to FL080 for URUKA 2N;  
- 6.4% up to FL060 for UDATA 2N.

BEARINGS AND TRACKS ARE MAGNETIC  
ALTITUDES AND ELEVATIONS IN FEET  
DISTANCES IN KILOMETRES