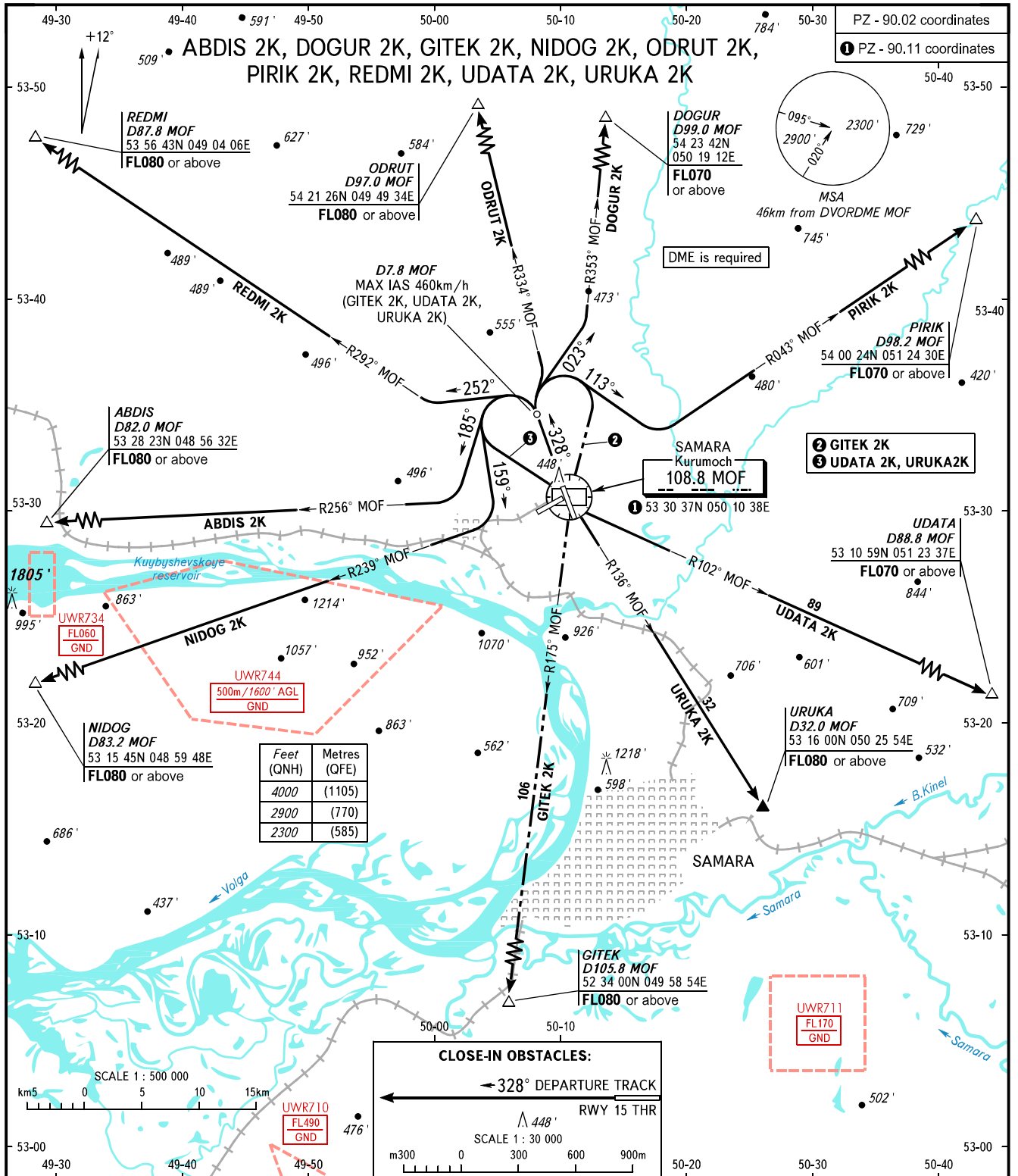


STANDARD DEPARTURE CHART
INSTRUMENT (SID) - ICAO

TRANSITION
ALTITUDE: 4000'

SAMARA, RUSSIA
KURUMOCH
RWY 33



TOWER 118.200
RADAR 128.000
APPROACH 124.600

- WARNING:**
- There are close-in obstacles.
 - MNM climb gradient due to the airspace structure:
 - 4.2% up to 6900' for ABDIS 2K;
 - 3.6% up to FL050 for DOGUR 2K;
 - 4.3% up to 3400' for GITEK 2K;
 - 4.2% up to 6000' for NIDOG 2K;
 - 3.7% up to FL050 for ODRUT 2K;
 - 3.4% up to FL060 for UDATA 2K;
 - 3.9% up to FL080 for URUKA 2K.

BEARINGS AND TRACKS ARE MAGNETIC
ALTITUDES AND ELEVATIONS IN FEET
DISTANCES IN KILOMETRES