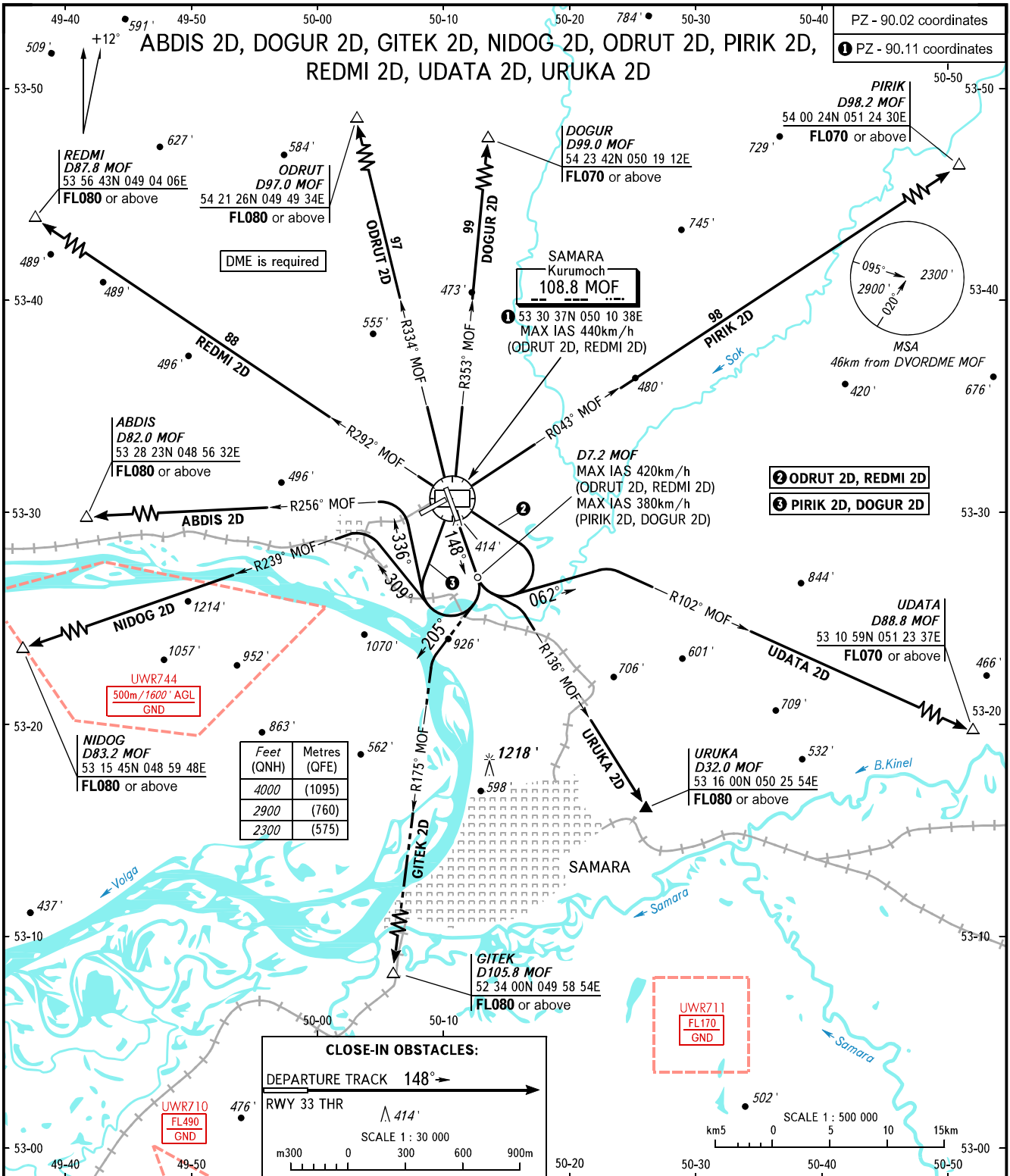


STANDARD DEPARTURE CHART
INSTRUMENT (SID) - ICAO

TRANSITION
ALTITUDE: 4000'

SAMARA, RUSSIA
KURUMOCH
RWY 15



TOWER 118.200
RADAR 128.000
APPROACH 124.600

WARNING:

- There are close-in obstacles.
- MNM climb gradient due to the airspace structure:
 - 5.4% up to 3500' for ABDIS 2D;
 - 5.4% up to 3500' for NIDOG 2D;
 - 4.6% up to FL060 for GITEK 2D;
 - 3.8% up to FL110 for ODRUT 2D;
 - 7.7% up to FL080 for URUKA 2D;
 - 7.0% up to FL060 for UDATA 2D.

BEARINGS AND TRACKS ARE MAGNETIC
ALTITUDES AND ELEVATIONS IN FEET
DISTANCES IN KILOMETRES

CHANGE: New chart