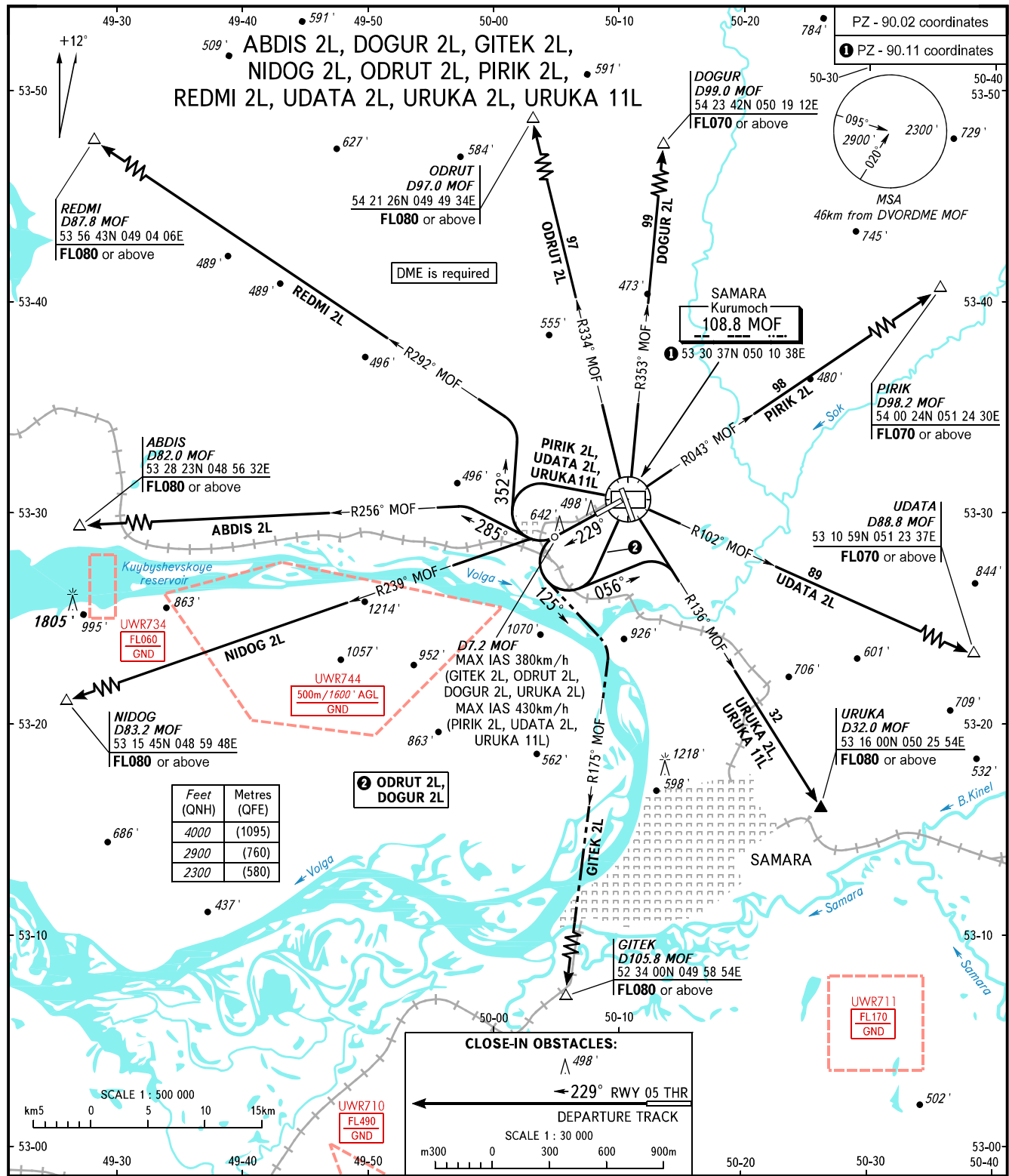


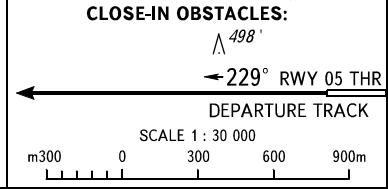
STANDARD DEPARTURE CHART
INSTRUMENT (SID) - ICAO

TRANSITION
ALTITUDE: 4000'

SAMARA, RUSSIA
KURUMOCH
RWY 23



Feet (QNH)	Metres (QFE)
4000	(1095)
2900	(760)
2300	(580)



TOWER 118.200
RADAR 128.000
APPROACH 124.600

- WARNING:**
- There are close-in obstacles.
 - MNM climb gradient:
 - 4.8% up to 900' due to obstacles, then 4.8% up to FL060 due to the airspace structure for ABDIS 2L;
 - 4.9% up to 900' due to obstacles, then 4.9% up to FL060 due to the airspace structure for NIDOG 2L;
 - 3.9% up to 900' due to obstacles for DOGUR 2L;
 - 4.1% up to 900' due to obstacles, then 4.1% up to FL060 due to the airspace structure for GITEK 2L;
 - 3.9% up to 900' due to obstacles for ODRUT 2L;
 - 3.9% up to 900' due to obstacles for PIRIK 2L;
 - 3.9% up to 900' due to obstacles for REDMI 2L;
 - 3.9% up to 900' due to obstacles for UDATA 2L;
 - 5.0% up to 900' due to obstacles, then 5.0% up to FL080 due to the airspace structure for URUKA 2L;
 - 3.9% up to 900' due to obstacles, then 3.9% up to FL080 due to the airspace structure for URUKA 11L.

BEARINGS AND TRACKS ARE MAGNETIC
ALTITUDES AND ELEVATIONS IN FEET
DISTANCES IN KILOMETRES