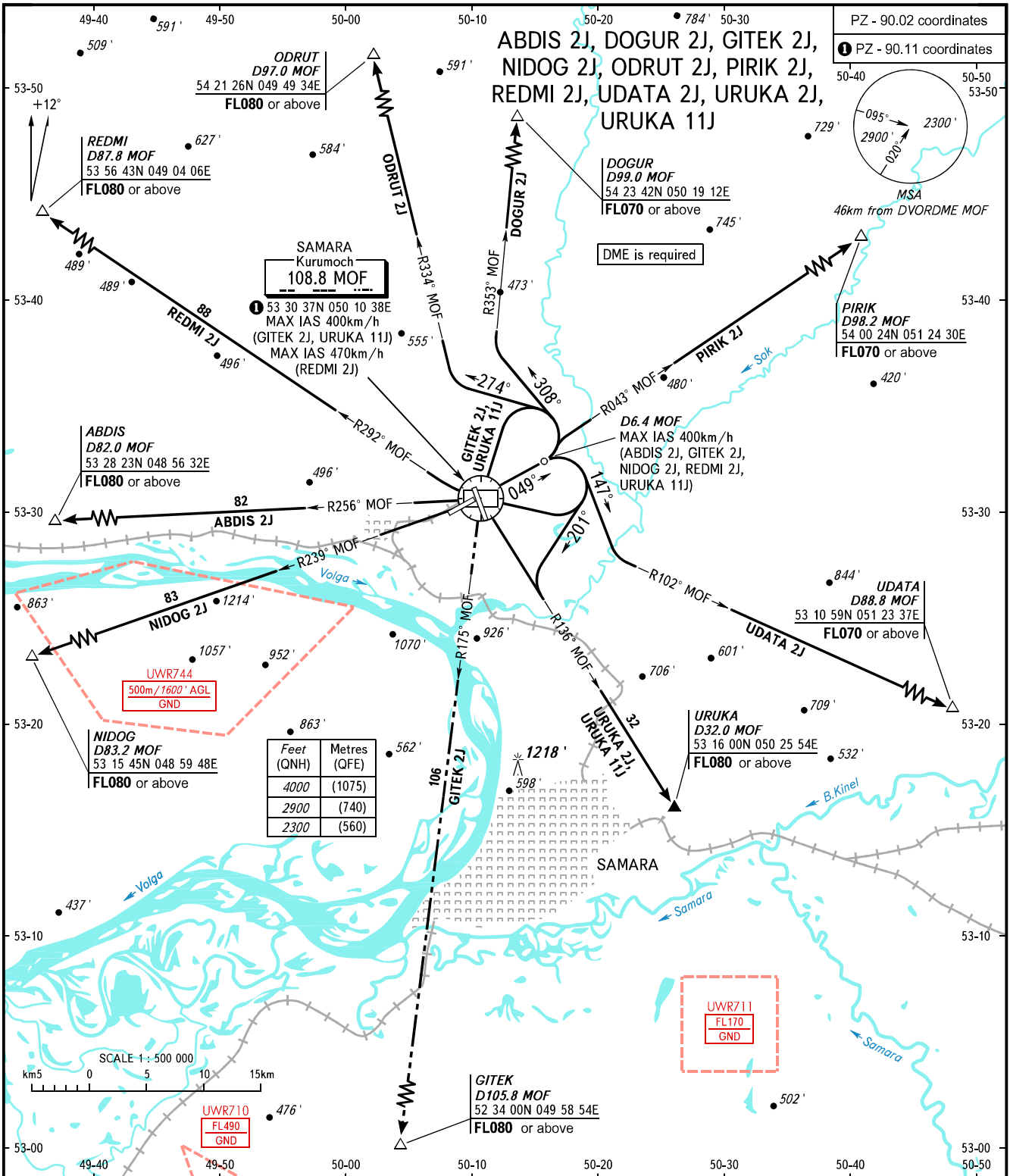


STANDARD DEPARTURE CHART  
INSTRUMENT (SID) - ICAO

TRANSITION  
ALTITUDE: 4000'

SAMARA, RUSSIA  
KURUMOCH  
RWY 05



Feet (QNH)	Metres (QFE)
4000	(1075)
2900	(740)
2300	(560)

TOWER 118.200  
RADAR 128.000  
APPROACH 124.600

**WARNING**  
MNM climb gradient due to the airspace structure:

- 4.4% up to 4400' for ABDIS J;
- 4.4% up to 3400' for GITEK 2J;
- 4.4% up to 4400' for NIDOG 2J;
- 3.7% up to FL050 for PIRIK 2J;
- 6.1% up to FL060 for UDATA 2J;
- 5.1% up to FL080 for URUKA 2J;
- 3.8% up to FL080 for URUKA 11J.

BEARINGS AND TRACKS ARE MAGNETIC  
ALTITUDES AND ELEVATIONS IN FEET  
DISTANCES IN KILOMETRES

CHANGE: New chart