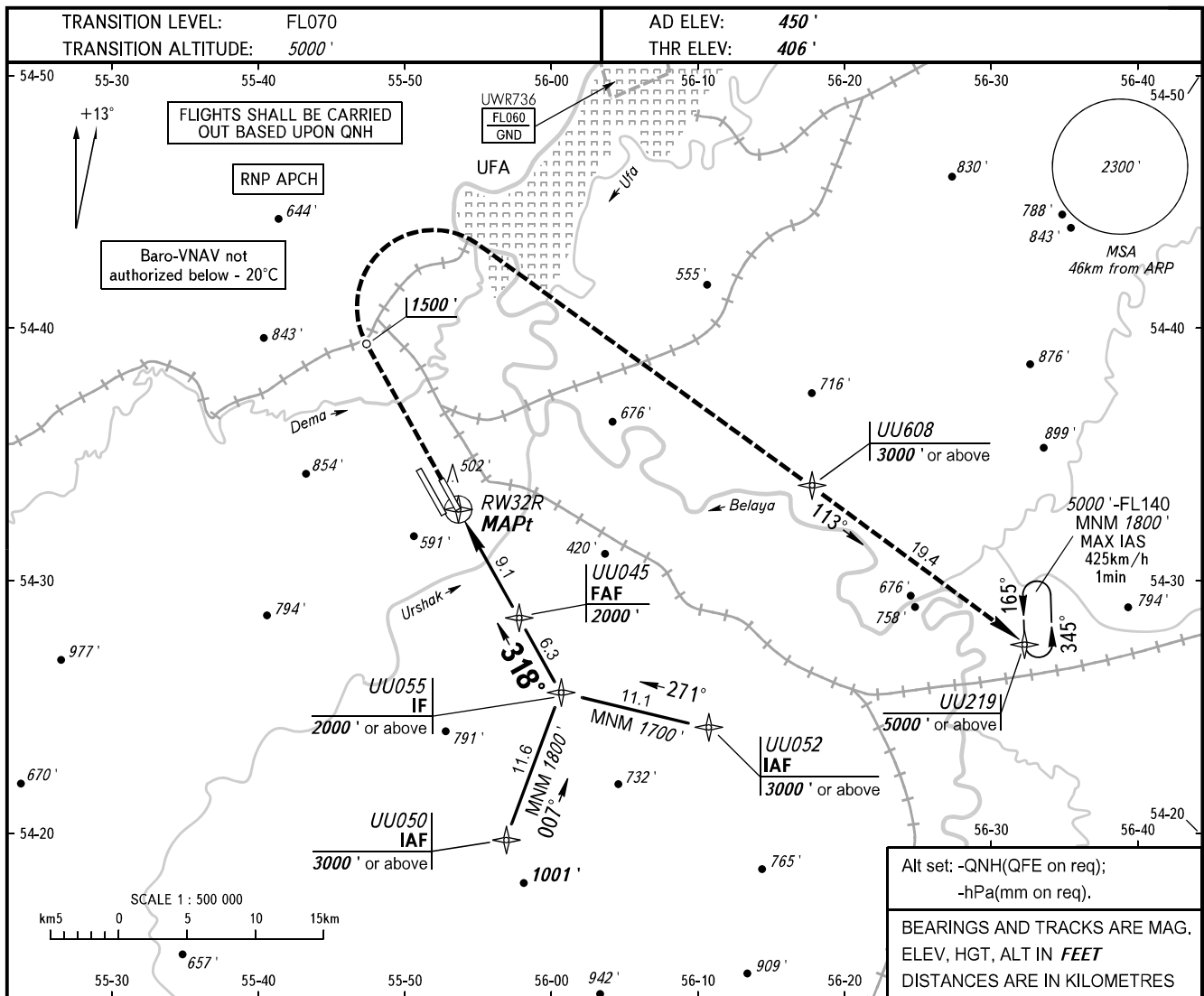


**INSTRUMENT  
APPROACH  
CHART - ICAO**

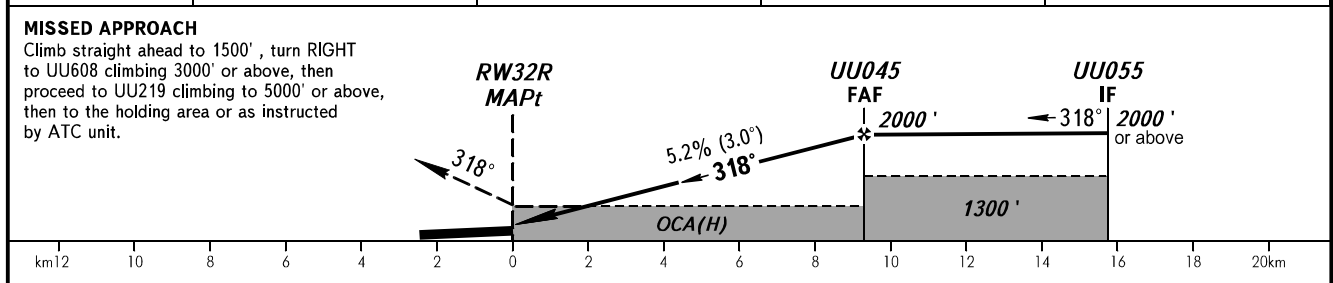
RADAR 120.900

**UFA, RUSSIA**  
UFA  
RNAV (GNSS) RWY 32R



Alt set: -QNH(QFE on req);  
-hPa(mm on req).  
BEARINGS AND TRACKS ARE MAG.  
ELEV, HGT, ALT IN FEET  
DISTANCES ARE IN KILOMETRES

DIST to RW32R	2	4	6	8
ALT 3.0° APCH	800'	1140'	1480'	1820'



OCA(H)		A	B	C	D								
Straight-in	LNAV	800' (400')	800' (400')	800' (400')	800' (400')								
	LNAV/VNAV	670' (270')	680' (280')	690' (290')	700' (300')								
Approach													
Circling		890' (440')	950' (510')	1050' (600')	1260' (810')								
GROUND SPEED		km/h	150	180	210	240	270	300	330	360	390	420	450
RATE OF DESCENT		m/s	2.2	2.6	3.0	3.5	3.9	4.3	4.8	5.2	5.6	6.1	6.5

**WARNING:**  
1. MAPt at RW32R. Timing not authorized.  
2. Flying birds can be expected in take-off, landing areas and on final approach segment.