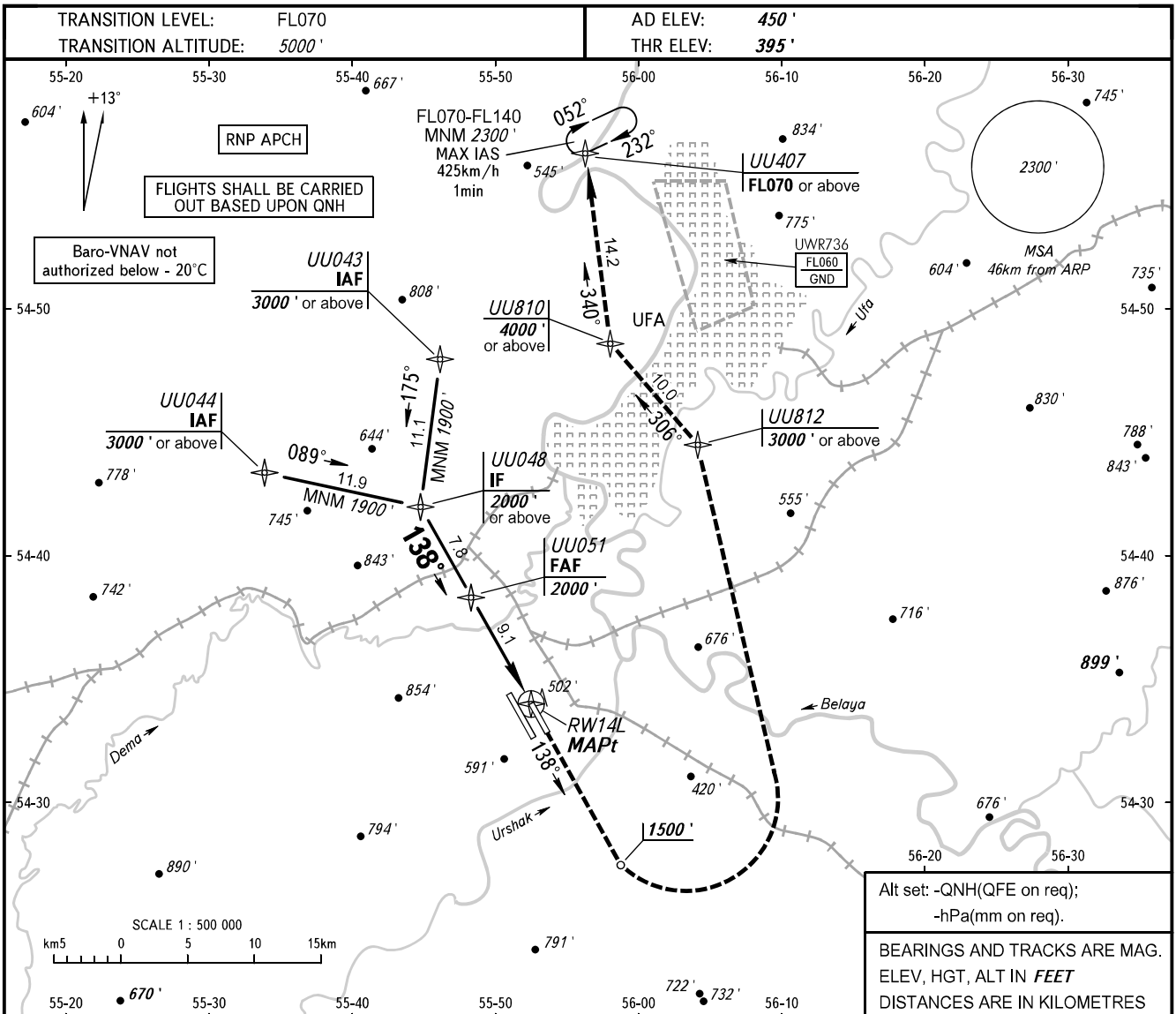


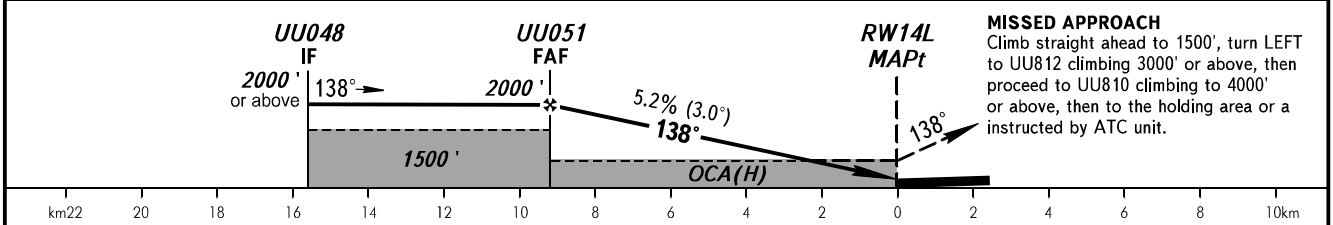
**INSTRUMENT
APPROACH
CHART - ICAO**

RADAR **120,900**

UFA, RUSSIA
UFA
RNAV (GNSS) RWY 14L



DIST to RW14L	8	6	4	2
ALT 3.0° APCH	1820'	1480'	1140'	790'



OCA(H)		A	B	C	D
Straight-in	LNAV	760' (360')	760' (360')	760' (360')	760' (360')
	LNAV/VNAV	650' (250')	660' (260')	670' (270')	680' (280')
Approach					
Circling		890' (440')	950' (510')	1050' (600')	1260' (810')

MISSED APPROACH
Climb straight ahead to 1500', turn LEFT to UU812 climbing 3000' or above, then proceed to UU810 climbing to 4000' or above, then to the holding area or a instructed by ATC unit.

WARNING:
1. MAPt at RW14L. Timing not authorized.
2. Flying birds can be expected in take-off, landing areas and on final approach segment.

GROUND SPEED	km/h	150	180	210	240	270	300	330	360	390	420	450
RATE OF DESCENT	m/s	2.2	2.6	3.0	3.5	3.9	4.3	4.8	5.2	5.6	6.1	6.5

CHANGE: ALT 3.0° APCH