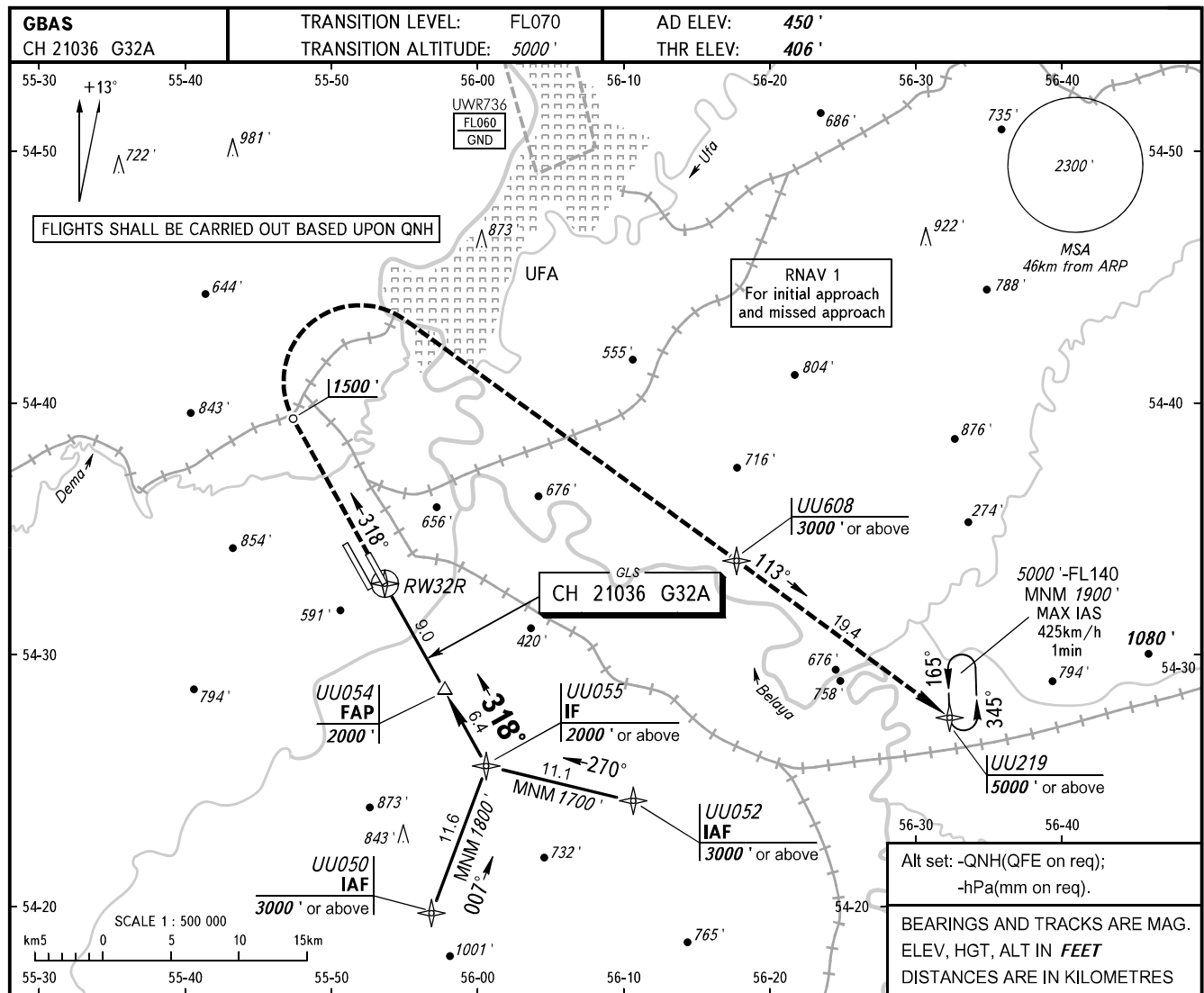


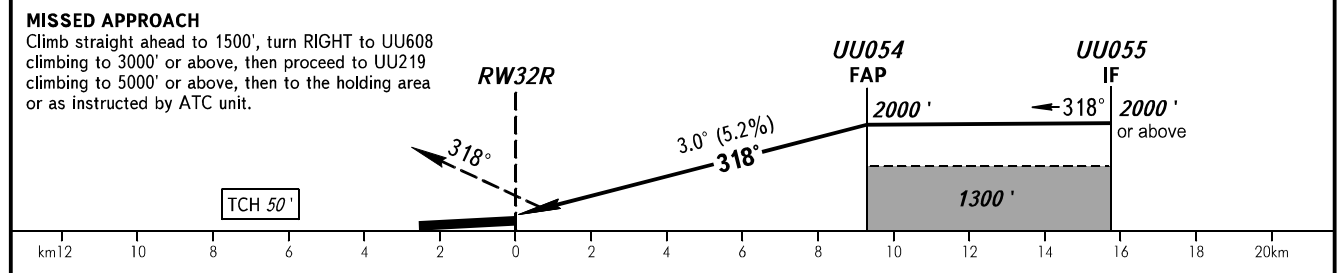
**INSTRUMENT
APPROACH
CHART - ICAO**

UFA, RUSSIA
UFA
GLS RWY 32R CAT I

RADAR 120.900



DIST to RW32R	2	4	6	8
ALT 3.0° APCH	800'	1140'	1480'	1820'



OCA(H)		A	B	C	D	WARNING:							
Straight-in Approach	CAT I	633' (228')	646' (241')	654' (248')	664' (259')	1. MAPt at RW32R. Timing not authorized. 2. Flying birds can be expected in take-off, landing areas and on final approach segment.							
Circling		890' (440')	950' (510')	1050' (600')	1260' (810')								
GROUND SPEED		km/h	150	180	210	240	270	300	330	360	390	420	450
RATE OF DESCENT		m/s	2.2	2.6	3.0	3.5	3.9	4.3	4.8	5.2	5.6	6.1	6.5

CHANGE: RNAV 1, ALT 3.0° APCH