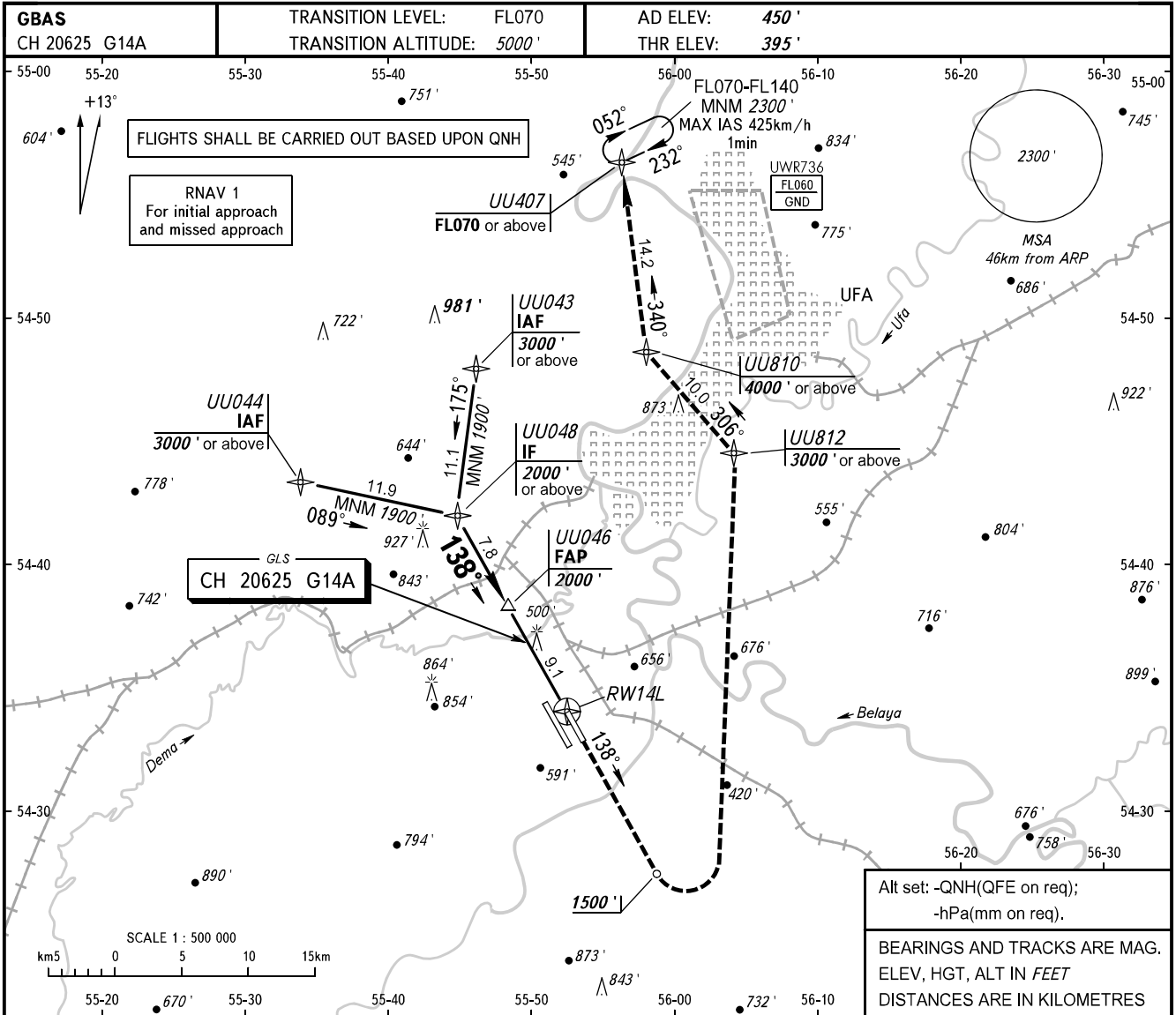


**INSTRUMENT
APPROACH
CHART - ICAO**

UFA, RUSSIA
UFA
GLS RWY 14L CAT I

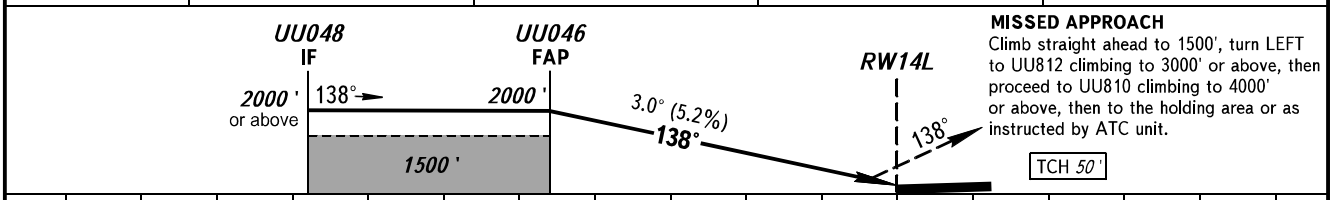
RADAR 120,900



Alt set: -QNH(QFE on req);
-hPa(mm on req).

BEARINGS AND TRACKS ARE MAG.
ELEV, HGT, ALT IN FEET
DISTANCES ARE IN KILOMETRES

DIST to RW14L	8	6	4	2
ALT 3.0° APCH	1820'	1480'	1140'	790'



OCA(H)		A	B	C	D
Straight-in	CAT I	623' (229')	636' (241')	644' (249')	654' (260')
	Approach				
Circling		890' (440')	950' (510')	1050' (600')	1260' (810')

WARNING:
1. MAPt at RW14L. Timing not authorized.
2. Flying birds can be expected in take-off, landing areas and on final approach segment.

GROUND SPEED	km/h	150	180	210	240	270	300	330	360	390	420	450
RATE OF DESCENT	m/s	2.2	2.6	3.0	3.5	3.9	4.3	4.8	5.2	5.6	6.1	6.5

CHANGE: ALT 3.0° APCH