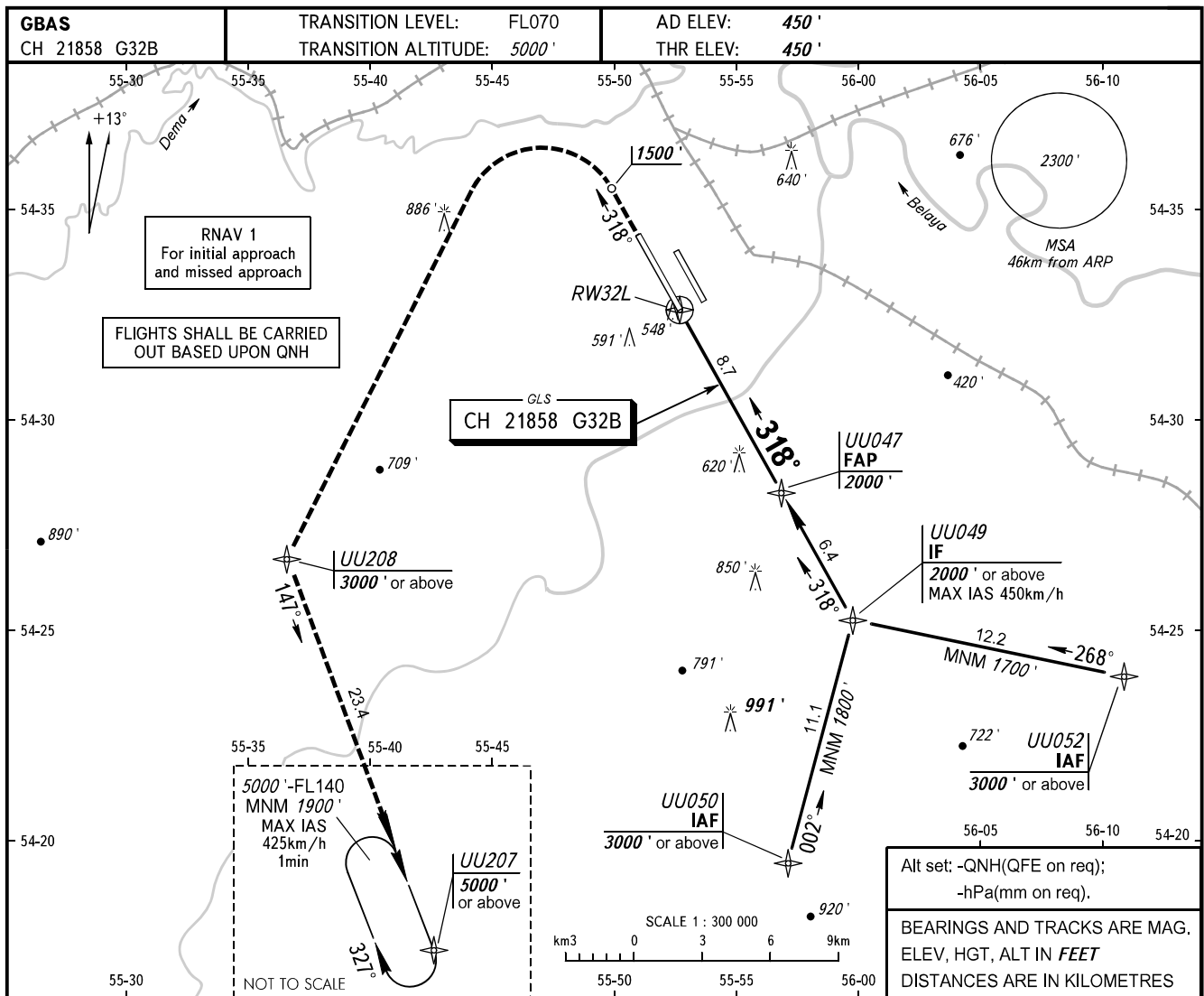


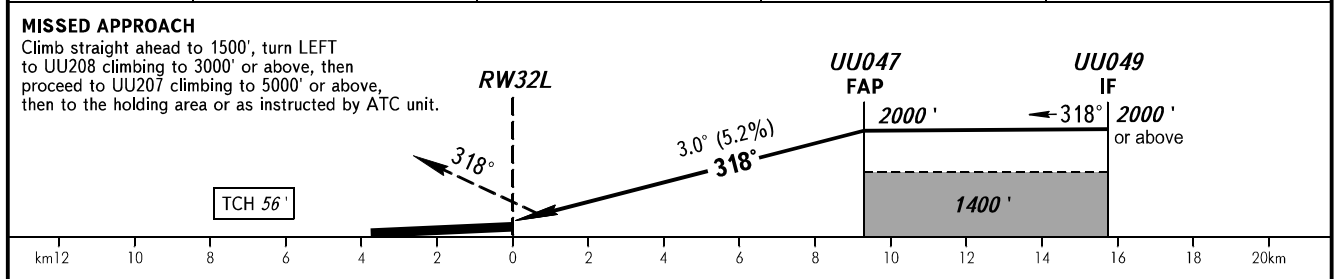
**INSTRUMENT
APPROACH
CHART - ICAO**

RADAR **120.900**

UFA, RUSSIA
UFA
GLS RWY 32L CAT I



DIST to RW32L	2	4	6	8
ALT 3.0° APCH	840'	1190'	1530'	1870'



OCA(H)		A	B	C	D	WARNING: 1. MAPt at RW32L. Timing not authorized. 2. Flying birds can be expected in take-off, landing areas and on final approach segment.									
Straight-in	CAT I	609' (159')	621' (171')	630' (180')	640' (190')										
	Approach														
Circling		890' (440')	950' (510')	1050' (600')	1260' (810')										
GROUND SPEED		km/h	150	180	210	240	270	300	330	360	390	420	450		
RATE OF DESCENT		m/s	2.2	2.6	3.0	3.5	3.9	4.4	4.8	5.2	5.6	6.1	6.5		