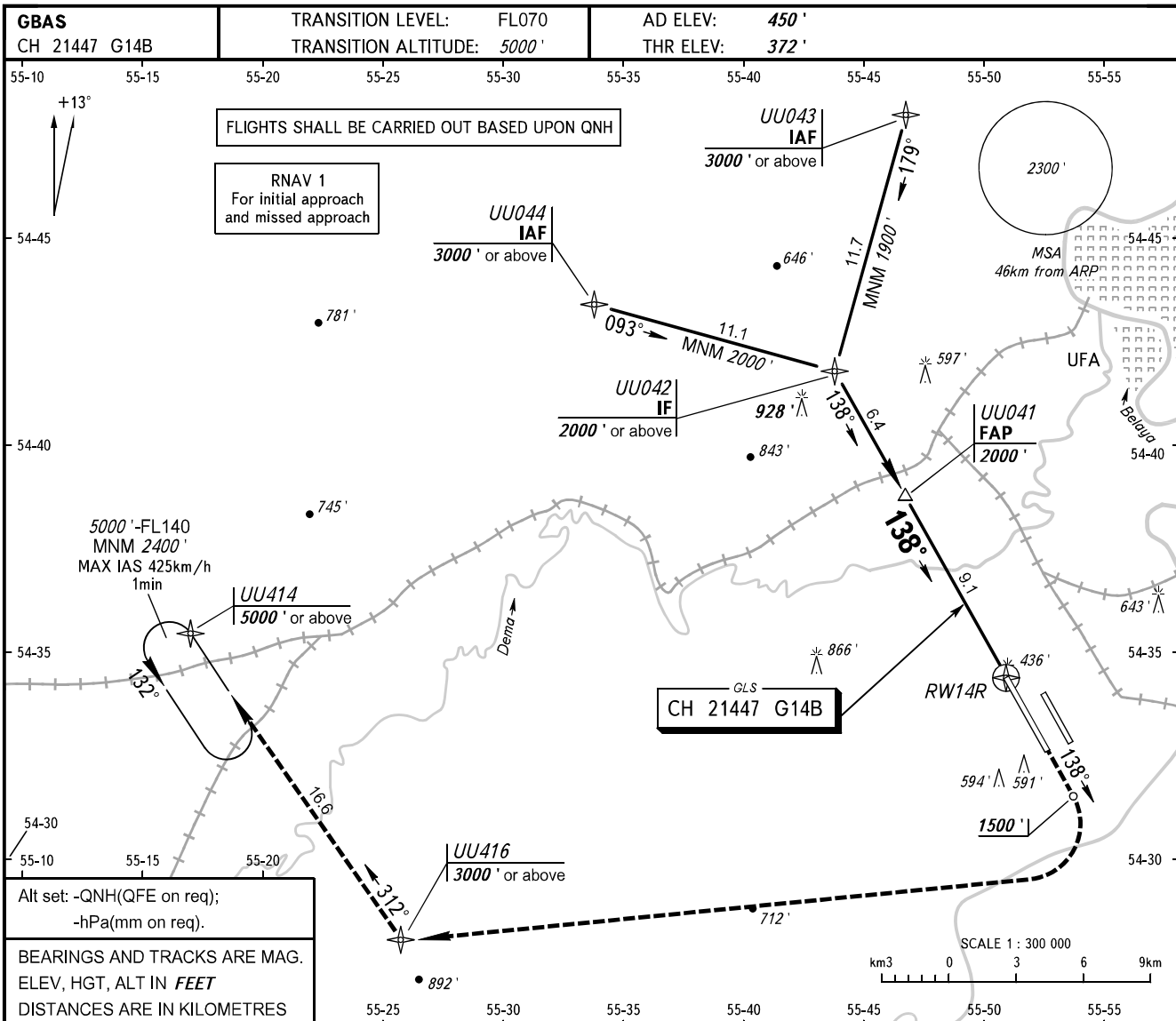


**INSTRUMENT  
APPROACH  
CHART - ICAO**

RADAR 120,900

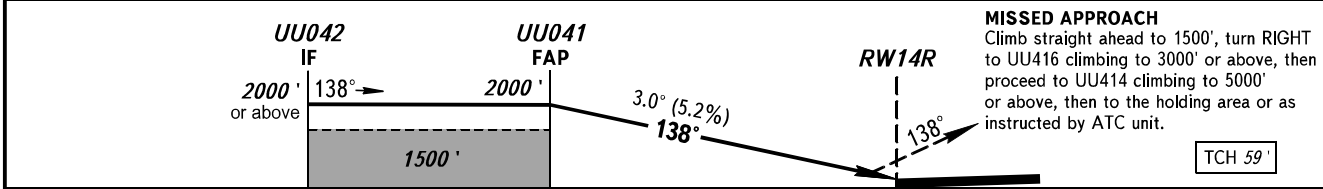
**UFA, RUSSIA**  
UFA  
GLS RWY 14R CAT I



Alt set: -QNH(QFE on req);  
-hPa(mm on req).

BEARINGS AND TRACKS ARE MAG.  
ELEV, HGT, ALT IN FEET  
DISTANCES ARE IN KILOMETRES

DIST to RW14R	8	6	4	2
ALT 3.0° APCH	1790'	1450'	1130'	770'



OCA(H)		A	B	C	D
Straight-in	CAT I	563' (191')	576' (204')	584' (212')	594' (222')
	Approach				
Circling		890' (440')	950' (510')	1050' (600')	1260' (810')

**WARNING:**

1. MAPt at RW14R. Timing not authorized.
2. Flying birds can be expected in take-off, landing areas and on final approach segment.

GROUND SPEED	km/h	150	180	210	240	270	300	330	360	390	420	450
RATE OF DESCENT	m/s	2.2	2.6	3.0	3.5	3.9	4.3	4.8	5.2	5.6	6.1	6.5

CHANGE: ALT 3.0° APCH