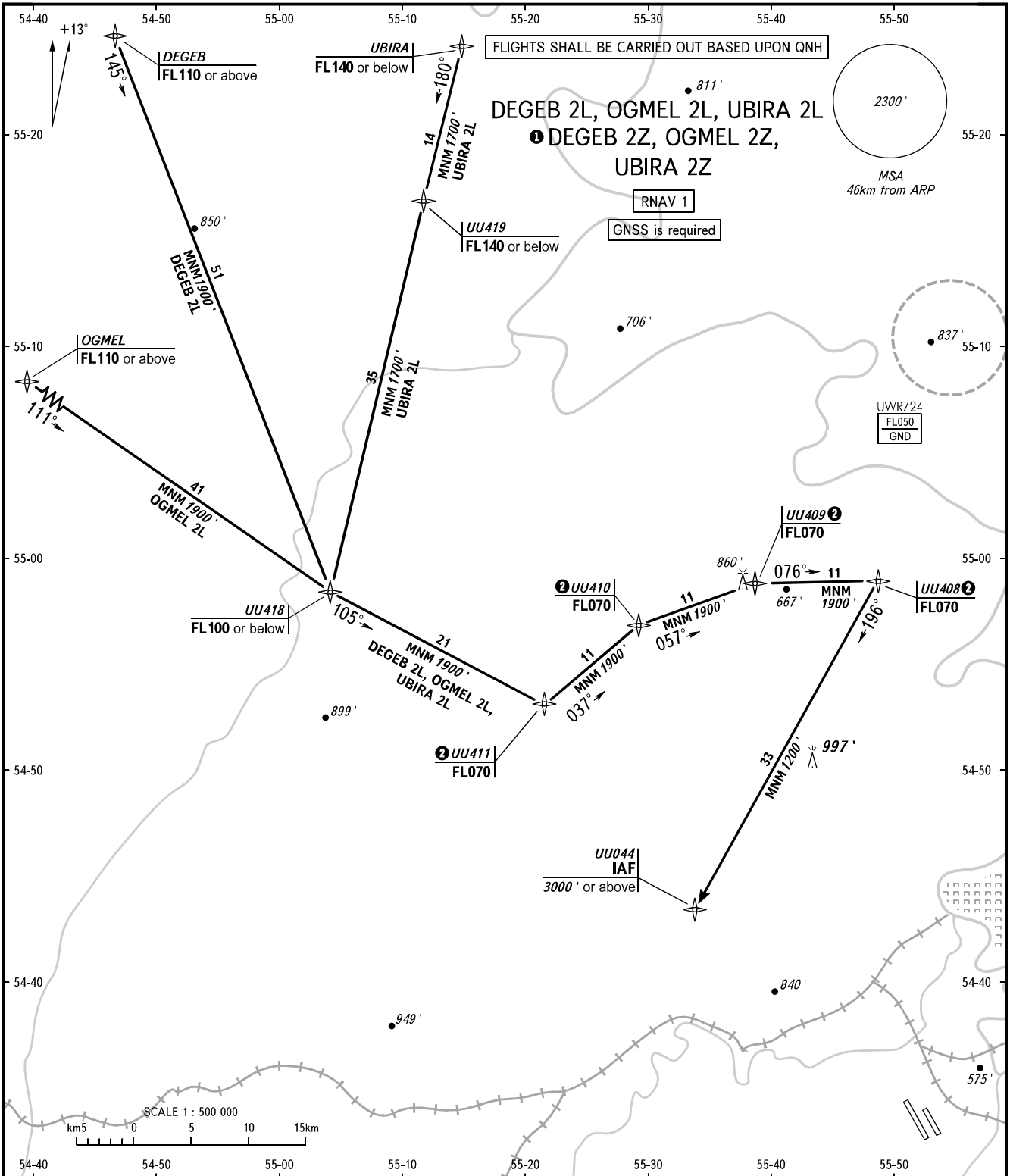


STANDARD ARRIVAL CHART
INSTRUMENT (STAR) - ICAO

TRANSITION
LEVEL : **FL070**

UFA, RUSSIA
UFA
RNAV RWY 14R, 14L



APPROACH **126.000**
RADAR **120.900**

- 1** STAR are only designated for calculation of fuel to destination:
- DEGEB 2Z** DEGEB [FL110+] - UU418 [FL100-] - UU411 [FL070] - UU044 [A3000+]
 - OGMEL 2Z** OGMEL [FL110+] - UU418 [FL110-] - UU411 [FL070] - UU044 [A3000+]
 - UBIRA 2Z** UBIRA [FL140-] - UU419 [FL140-] - UU418 [FL100-] - UU411 [FL070] - UU044 [A3000+]

2 MAX IAS 410km/h
WARNING
Flying birds can be expected in take-off, landing areas and on final approach segment.

BEARINGS AND TRACKS ARE MAGNETIC
ALTITUDES AND ELEVATIONS ARE IN FEET
DISTANCES ARE IN KILOMETRES

CHANGE: UWWR724