

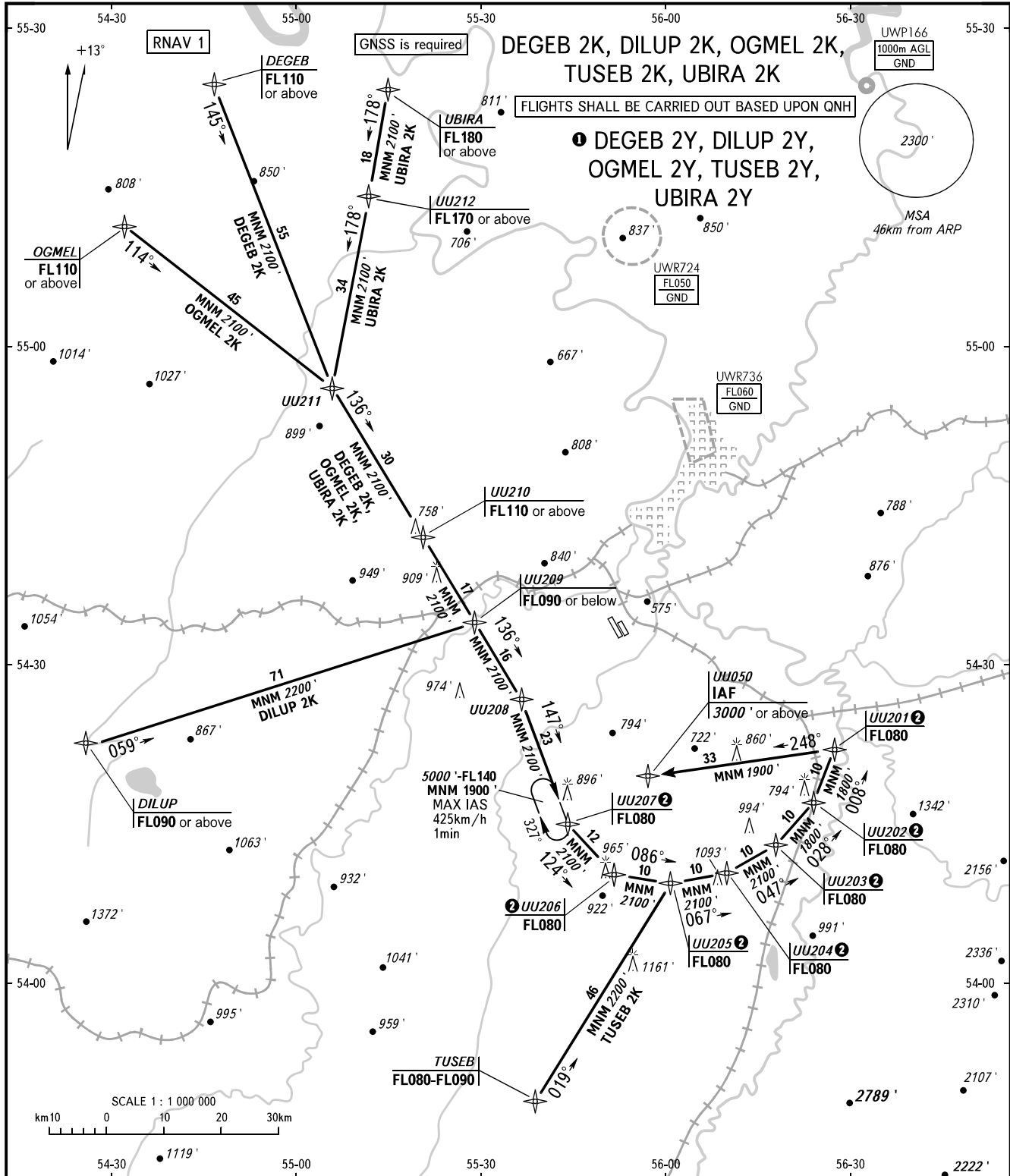
STANDARD ARRIVAL CHART
INSTRUMENT (STAR) - ICAO

UFA, RUSSIA

UFA

RNAV RWY 32L, 32R

TRANSITION
LEVEL : FL070



DEGEB 2K, DILUP 2K, OGMEL 2K,
TUSEB 2K, UBIRA 2K

FLIGHTS SHALL BE CARRIED OUT BASED UPON QNH

① DEGEB 2Y, DILUP 2Y,
OGMEL 2Y, TUSEB 2Y,
UBIRA 2Y

APPROACH RADAR 126.000
120.900

- ① STAR are only designated for calculation of fuel to destination:
- DEGEB 2Y** DEGEB [FL110+] - UU211-UU210 [FL110+] - UU209 [FL090+] - UU208 - UU050 [A3000+]
 - DILUP 2Y** DILUP [FL090+] - UU209 [FL090+] - UU208 - UU050 [A3000+]
 - OGMEL 2Y** OGMEL [FL110+] - UU211 - UU210 [FL110+] - UU209 [FL090+] - UU208 - UU050 [A3000+]
 - TUSEB 2Y** TUSEB [FL080-FL090] - UU205 [FL080] - UU050 [A3000+]
 - UBIRA 2Y** UBIRA [FL180+] - UU212 [FL170+] - UU211 - UU210 [FL110+] - UU209 [FL090+] - UU208 - UU050 [A3000+]

② MAX IAS 410km/h
WARNING
Flying birds can be expected in take-off, landing areas and on final approach segment.

BEARINGS AND TRACKS ARE MAGNETIC
ALTITUDES AND ELEVATIONS ARE IN FEET
DISTANCES ARE IN KILOMETRES