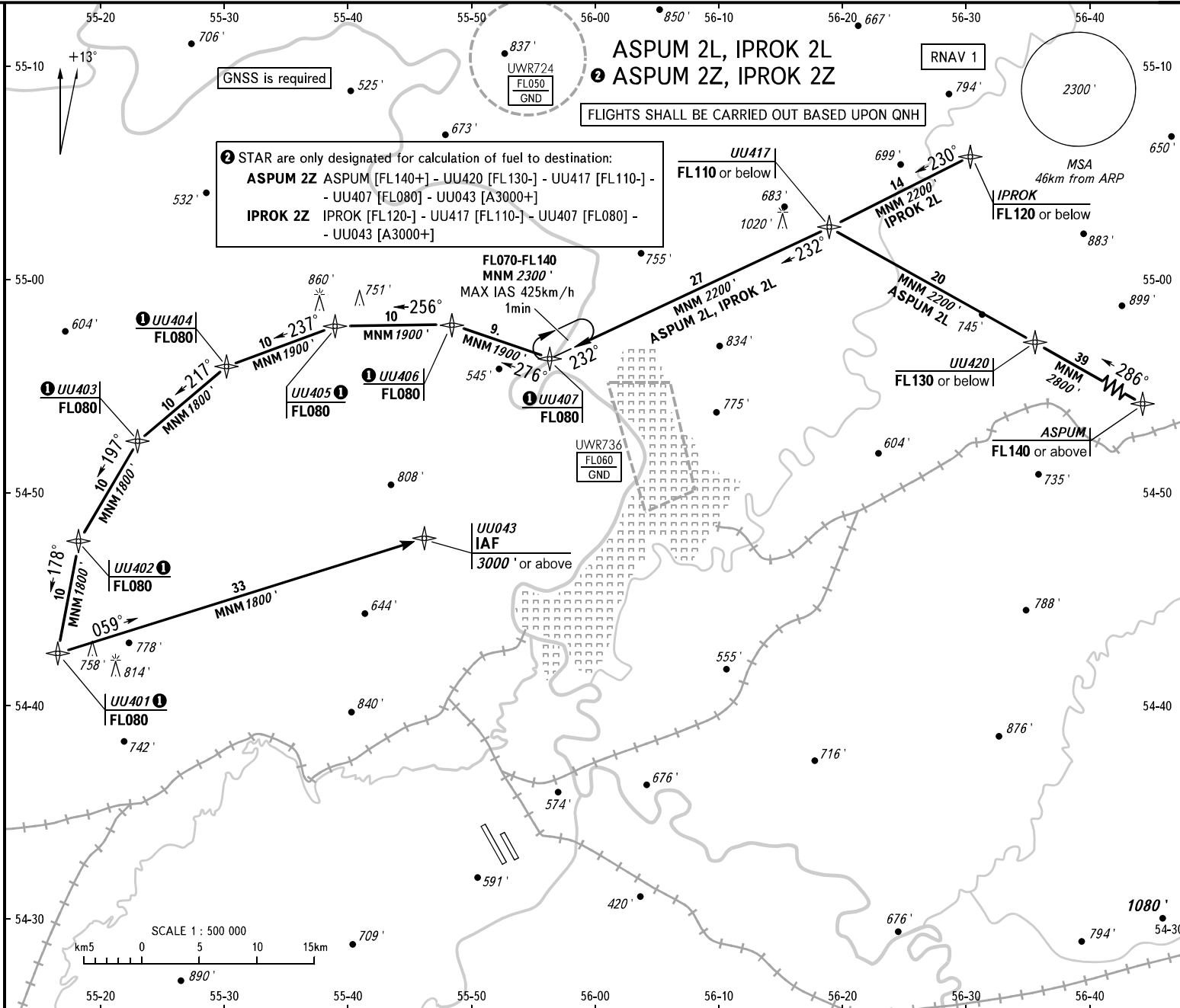


BEARINGS AND TRACKS ARE MAGNETIC
ALTITUDES AND ELEVATIONS ARE IN FEET
DISTANCES ARE IN KILOMETRES

APPROACH
RADAR
126.000
120.900



② STAR are only designated for calculation of fuel to destination:
ASPUM 2Z ASPUM [FL140+] - UU420 [FL130-] - UU417 [FL110-] -
 - UU407 [FL080] - UU043 [A3000+]
IPROK 2Z IPROK [FL120-] - UU417 [FL110-] - UU407 [FL080] -
 - UU043 [A3000+]

FLIGHTS SHALL BE CARRIED OUT BASED UPON QNH

GNSS is required

RNAV 1

AIP
RUSSIA
STANDARD ARRIVAL CHART
INSTRUMENT (STAR) - ICAO

TRANSITION
LEVEL: FL070

BOOK 1

AD 2.1 UWU-147
26 MAR 20
UFA, RUSSIA
UFA
RNAV RWY 14R, 14L

① MAX IAS 410km/h
WARNING
Flying birds can be expected in take-off,
landing areas and on final approach segment.

