

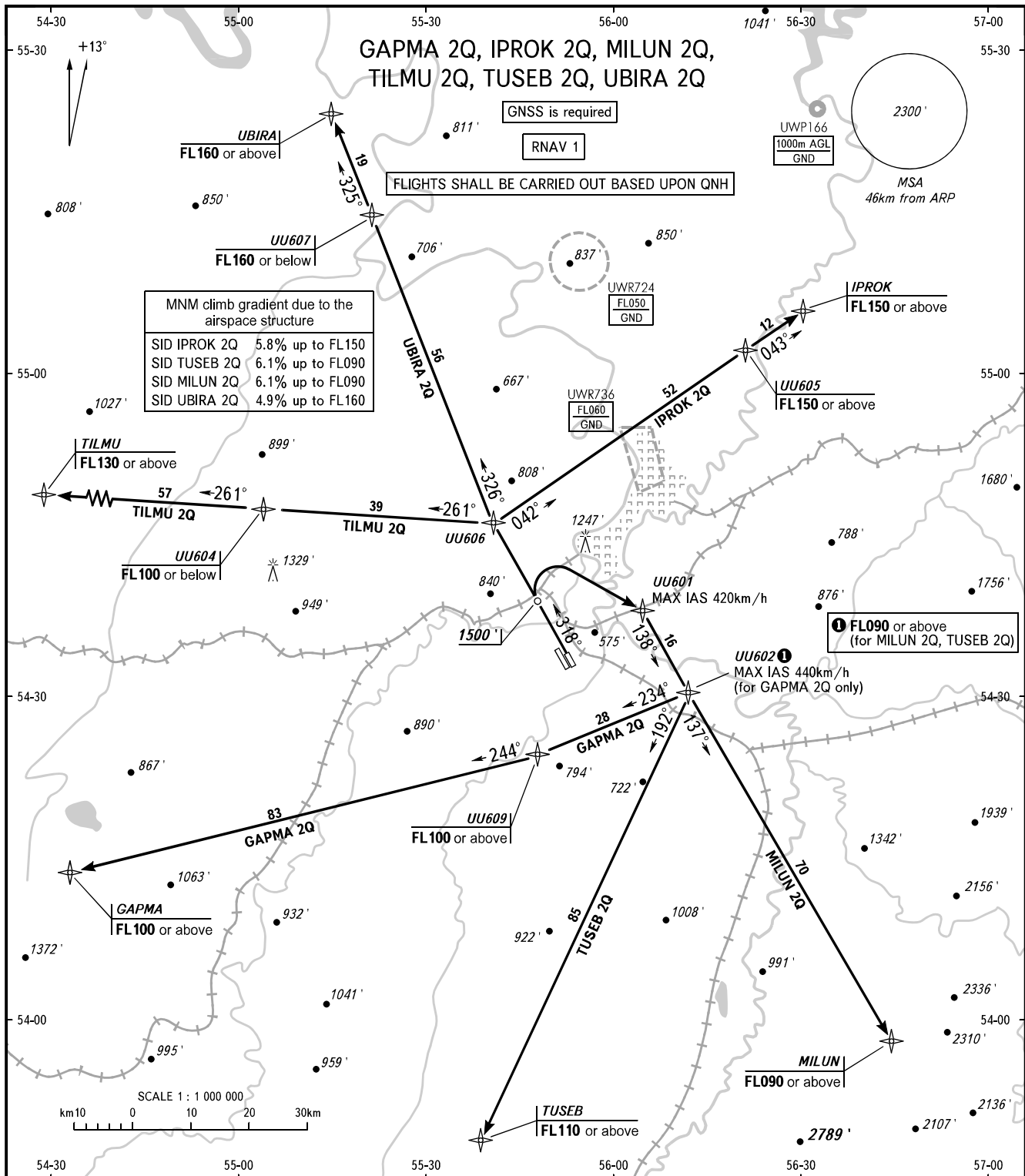
STANDARD DEPARTURE CHART  
INSTRUMENT (SID) - ICAO

TRANSITION  
ALTITUDE : 5000'

UFA, RUSSIA

UFA

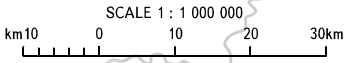
RNAV RWY 32R



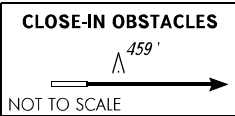
MNM climb gradient due to the airspace structure

SID IPROK 2Q	5.8% up to FL150
SID TUSEB 2Q	6.1% up to FL090
SID MILUN 2Q	6.1% up to FL090
SID UBIRA 2Q	4.9% up to FL160

① FL090 or above  
(for MILUN 2Q, TUSEB 2Q)



RADAR APPROACH 120.900  
126.000



- WARNING:**
1. Turn before DER is PROHIBITED.
  2. Flying birds can be expected in take-off, landing areas and on final approach segment.

BEARINGS AND TRACKS ARE MAGNETIC  
ALTITUDES AND ELEVATIONS ARE IN FEET  
DISTANCES ARE IN KILOMETRES

CHANGE: UWR724