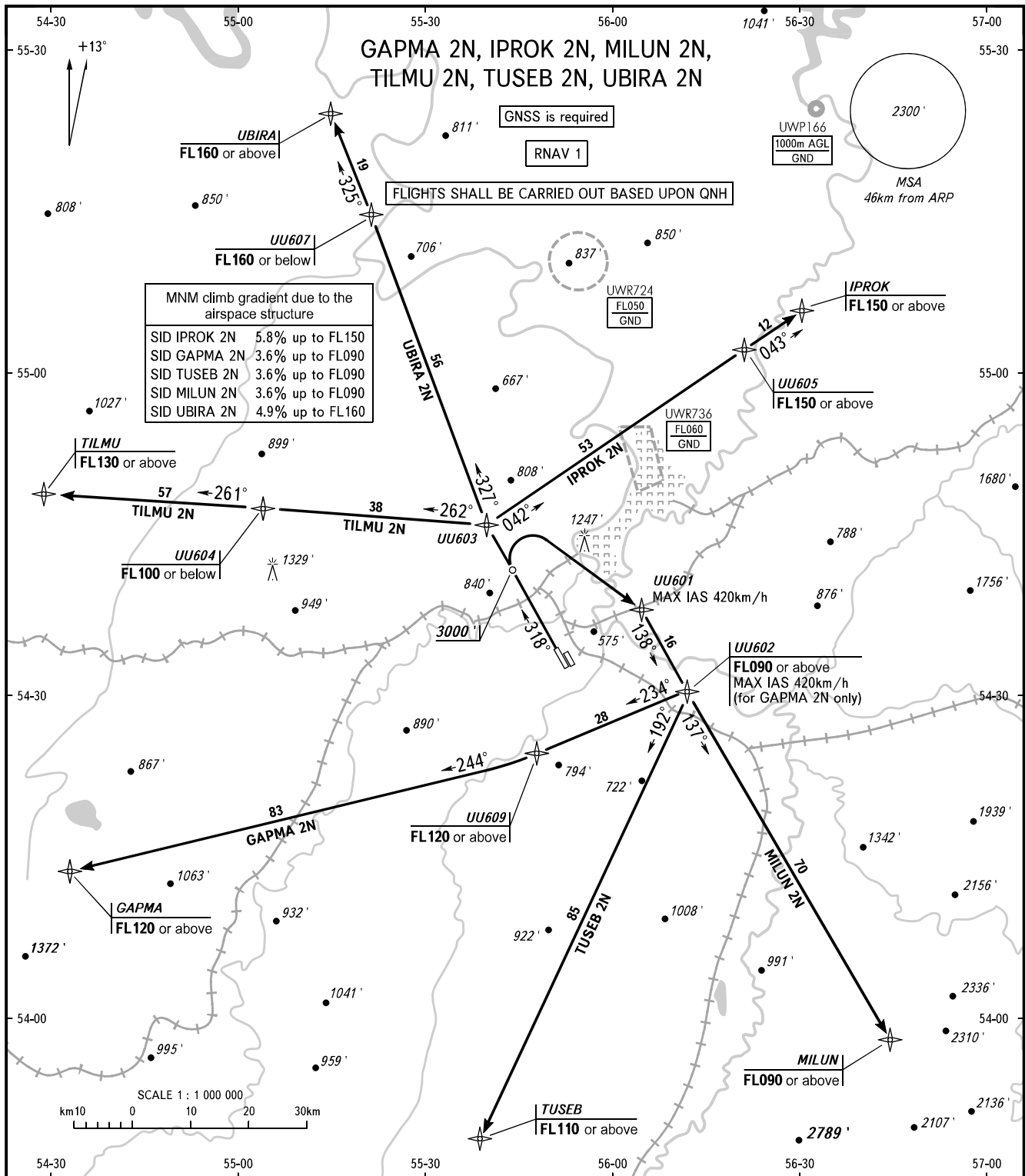


STANDARD DEPARTURE CHART
INSTRUMENT (SID) - ICAO

TRANSITION
ALTITUDE : 5000'

UFA, RUSSIA
UFA
RNAV RWY 32L



MNM climb gradient due to the airspace structure

SID IPROK 2N	5.8% up to FL150
SID GAPMA 2N	3.6% up to FL090
SID TUSEB 2N	3.6% up to FL090
SID MILUN 2N	3.6% up to FL090
SID UBIRA 2N	4.9% up to FL160

FLIGHTS SHALL BE CARRIED OUT BASED UPON QNH

UU602
FL090 or above
MAX IAS 420km/h
(for GAPMA 2N only)

RADAR 120.900
APPROACH 126.000

- WARNING:**
1. Turn before DER is PROHIBITED.
 2. Flying birds can be expected in take-off, landing areas and on final approach segment.

BEARINGS AND TRACKS ARE MAGNETIC
ALTITUDES AND ELEVATIONS ARE IN FEET
DISTANCES ARE IN KILOMETRES