

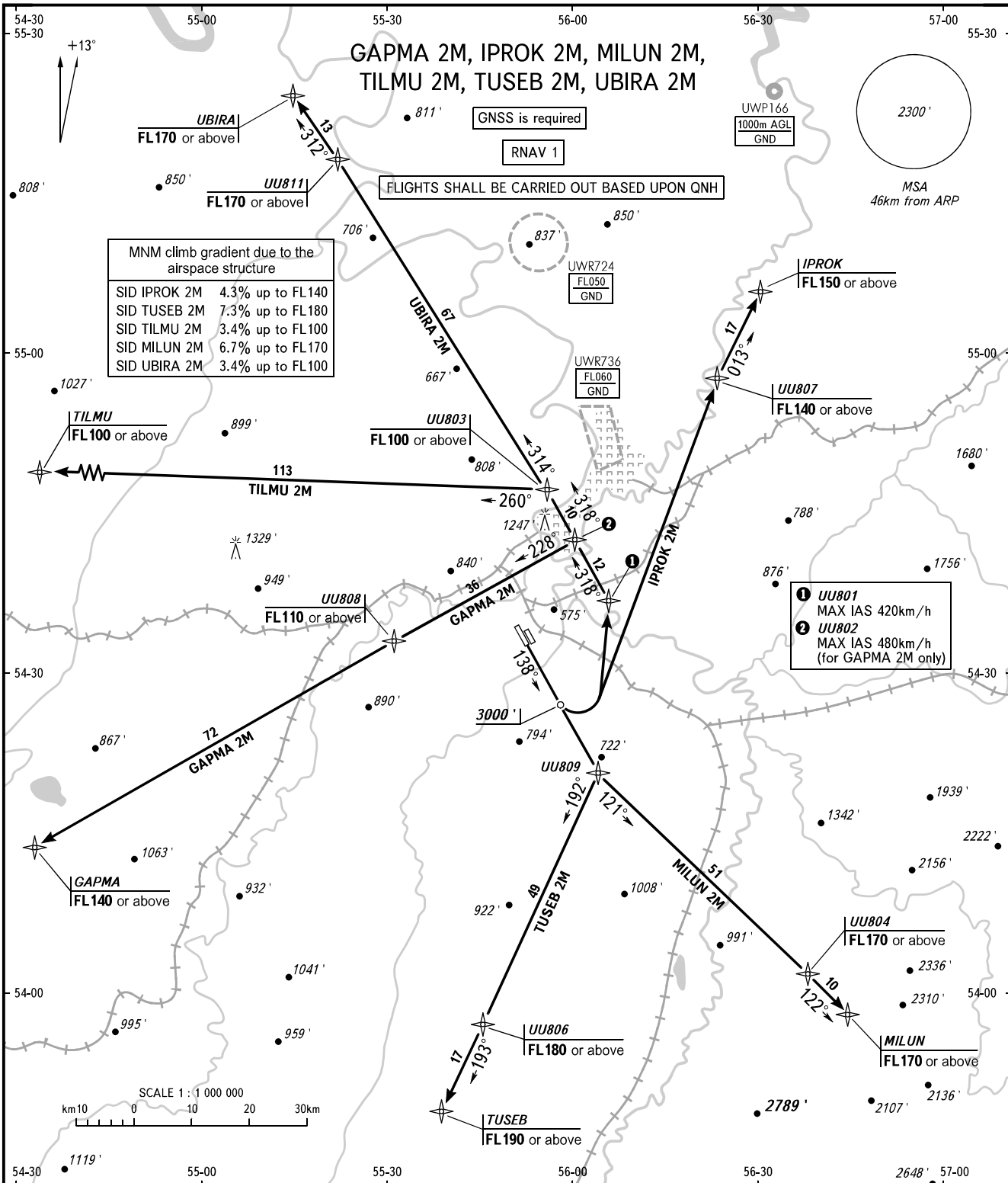
STANDARD DEPARTURE CHART  
INSTRUMENT (SID) - ICAO

TRANSITION  
ALTITUDE : 5000'

UFA, RUSSIA

UFA

RNAV RWY 14R



RADAR APPROACH 120.900  
126.000

**WARNING:**  
1. Turn before DER is PROHIBITED.  
2. Flying birds can be expected in take-off, landing areas and on final approach segment.

BEARINGS AND TRACKS ARE MAGNETIC  
ALTITUDES AND ELEVATIONS ARE IN FEET  
DISTANCES ARE IN KILOMETRES

CHANGE: UWR724