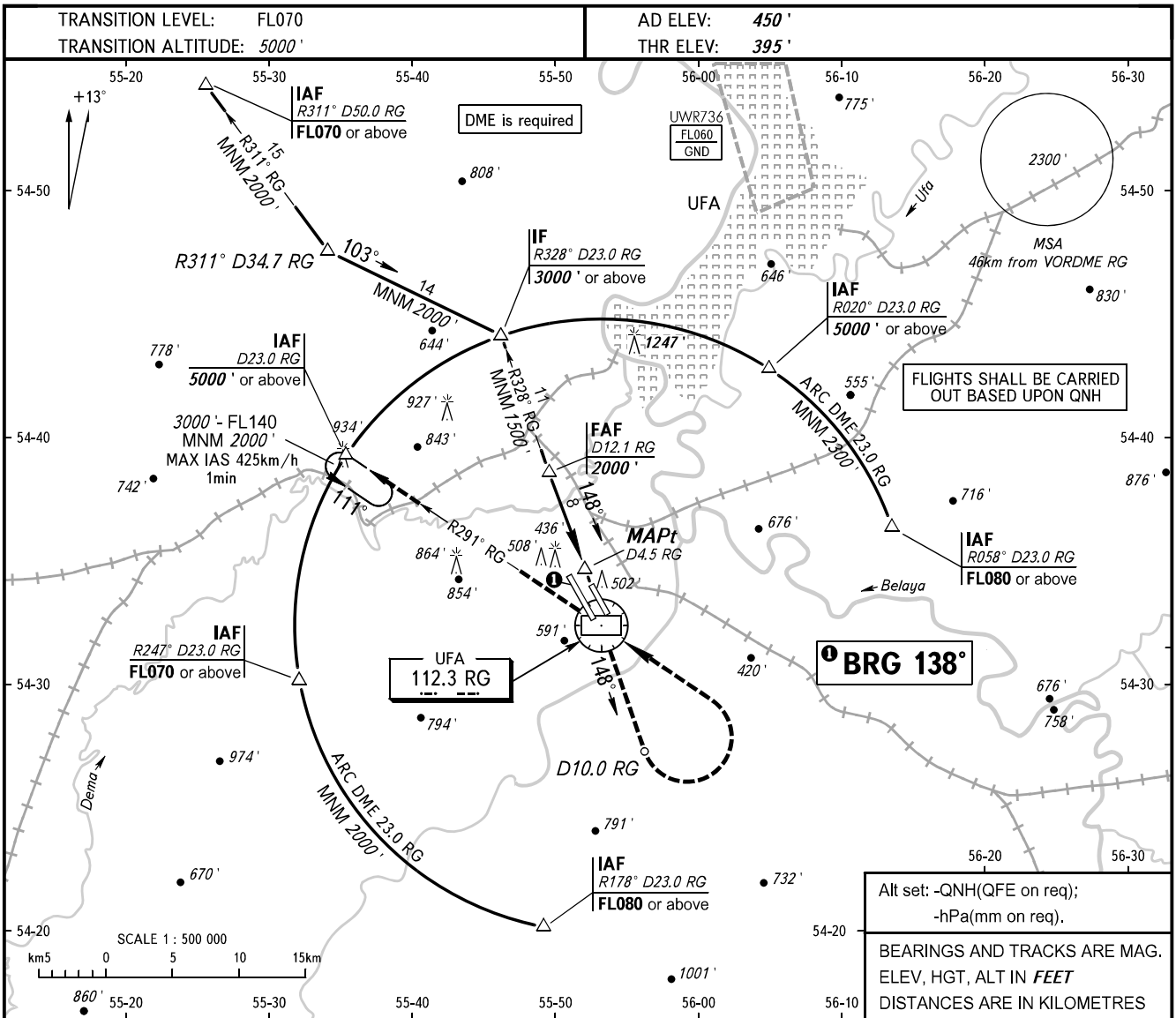


**INSTRUMENT
APPROACH
CHART - ICAO**

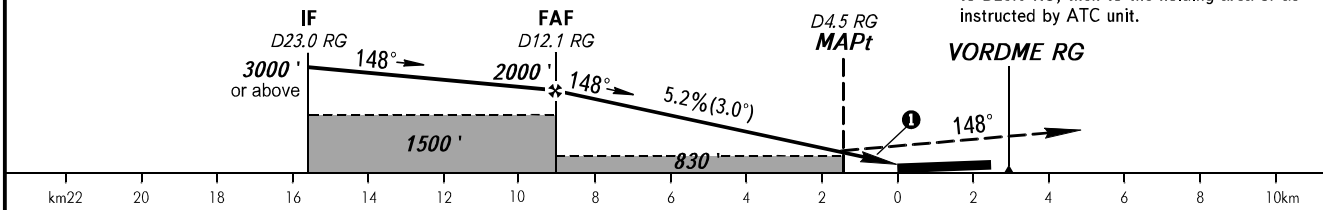
RADAR **120.900**

UFA, RUSSIA
UFA
VOR Z RWY 14L



Alt set: -QNH(QFE on req);
-hPa(mm on req).
BEARINGS AND TRACKS ARE MAG.
ELEV, HGT, ALT IN FEET
DISTANCES ARE IN KILOMETRES

MISSED APPROACH
Climb straight ahead to D10.0 RG, turn LEFT to VORDME RG, then proceed on R291° RG to D23.0 RG, then to the holding area or as instructed by ATC unit.



OCA(H)		A	B	C	D
Straight-in	Approach	830' (440')	830' (440')	830' (440')	830' (440')
	Circling	890' (440')	950' (510')	1050' (600')	1260' (810')

WARNING:
1. Final approach track is offset by 10° from RCL.
2. Flying birds can be expected in take-off, landing areas and on final approach segment.

GROUND SPEED	km/h	150	180	210	240	270	300	330	360	390	420	450
RATE OF DESCENT	m/s	2.2	2.6	3.0	3.5	3.9	4.3	4.8	5.2	5.6	6.1	6.5

CHANGE: MNM, IAF R020° RG ALT