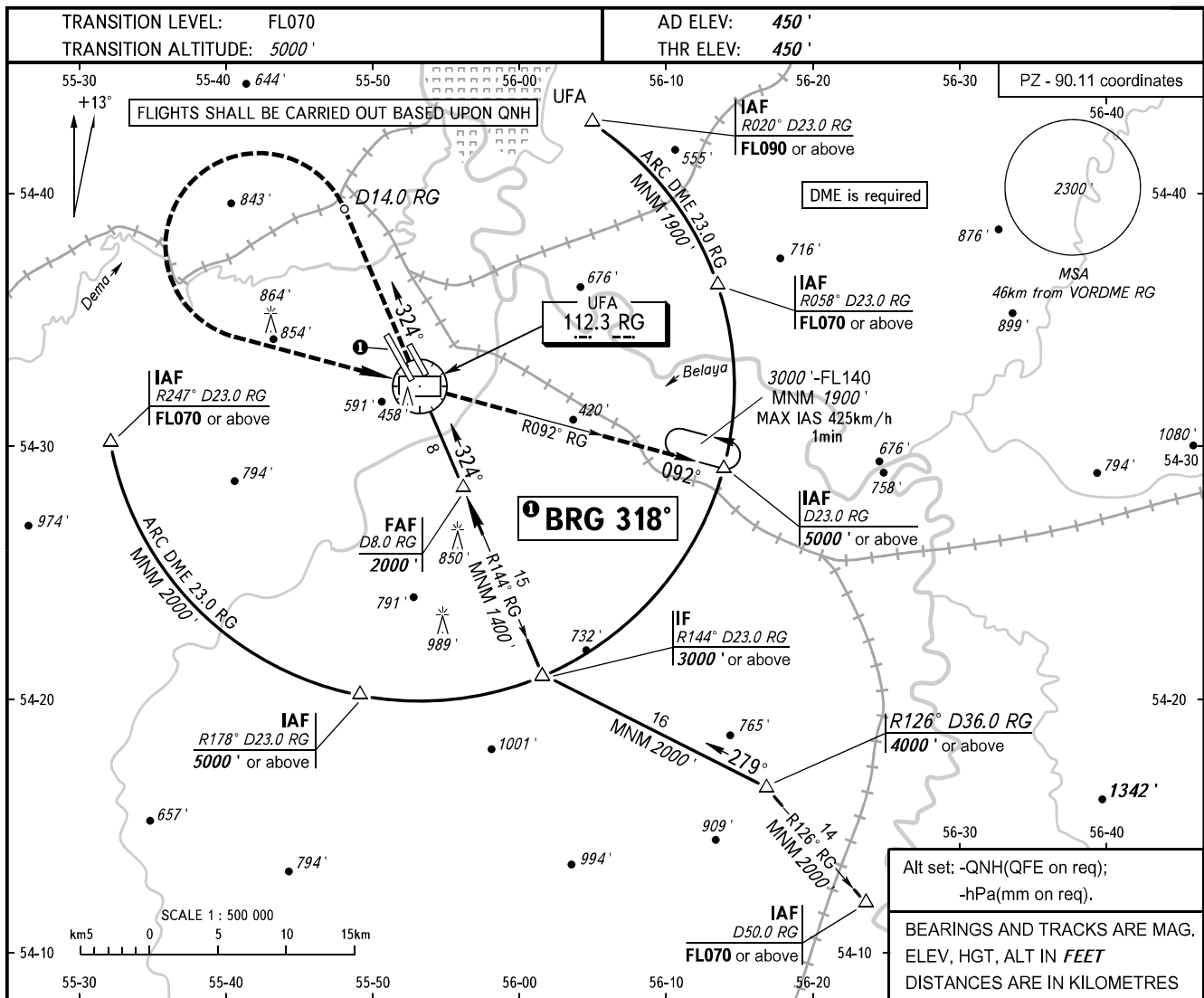


INSTRUMENT  
APPROACH  
CHART - ICAO

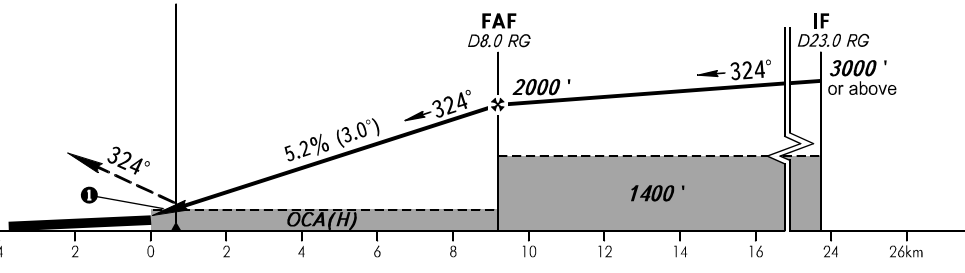
RADAR 120.900

UFA, RUSSIA  
UFA  
VOR Z RWY 32L



**MISSED APPROACH**  
Climb straight ahead to D14.0 RG, turn LEFT to VORDME RG, then proceed on R092° RG to D23.0 RG, then to the holding area or as instructed by ATC unit.

MAPt  
VORDME RG



OCA(H)		A	B	C	D
Straight-in	Approach	880' (430')	880' (430')	880' (430')	880' (430')
Circling		890' (440')	950' (510')	1050' (600')	1260' (810')

**WARNING:**  
1. Final approach track is offset by 6° from RCL.  
2. Flying birds can be expected in take-off, landing areas and on final approach segment.

GROUND SPEED	km/h	150	180	210	240	270	300	330	360	390	420	450
RATE OF DESCENT	m/s	2.2	2.6	3.0	3.5	3.9	4.3	4.8	5.2	5.6	6.1	6.5