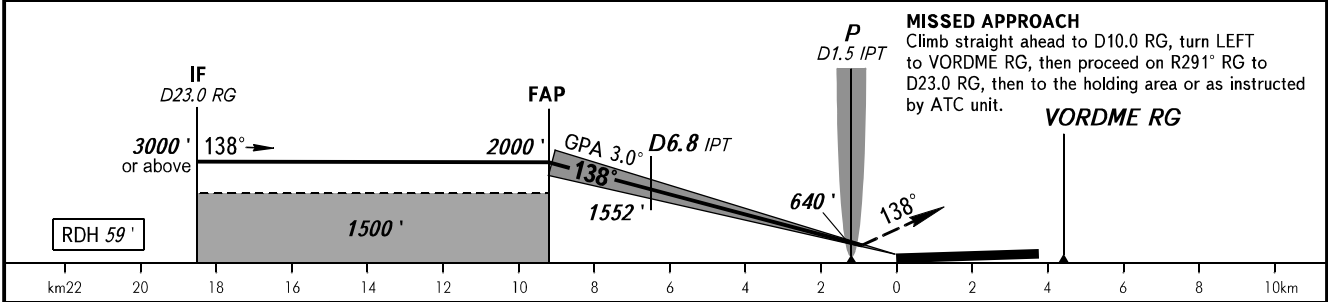
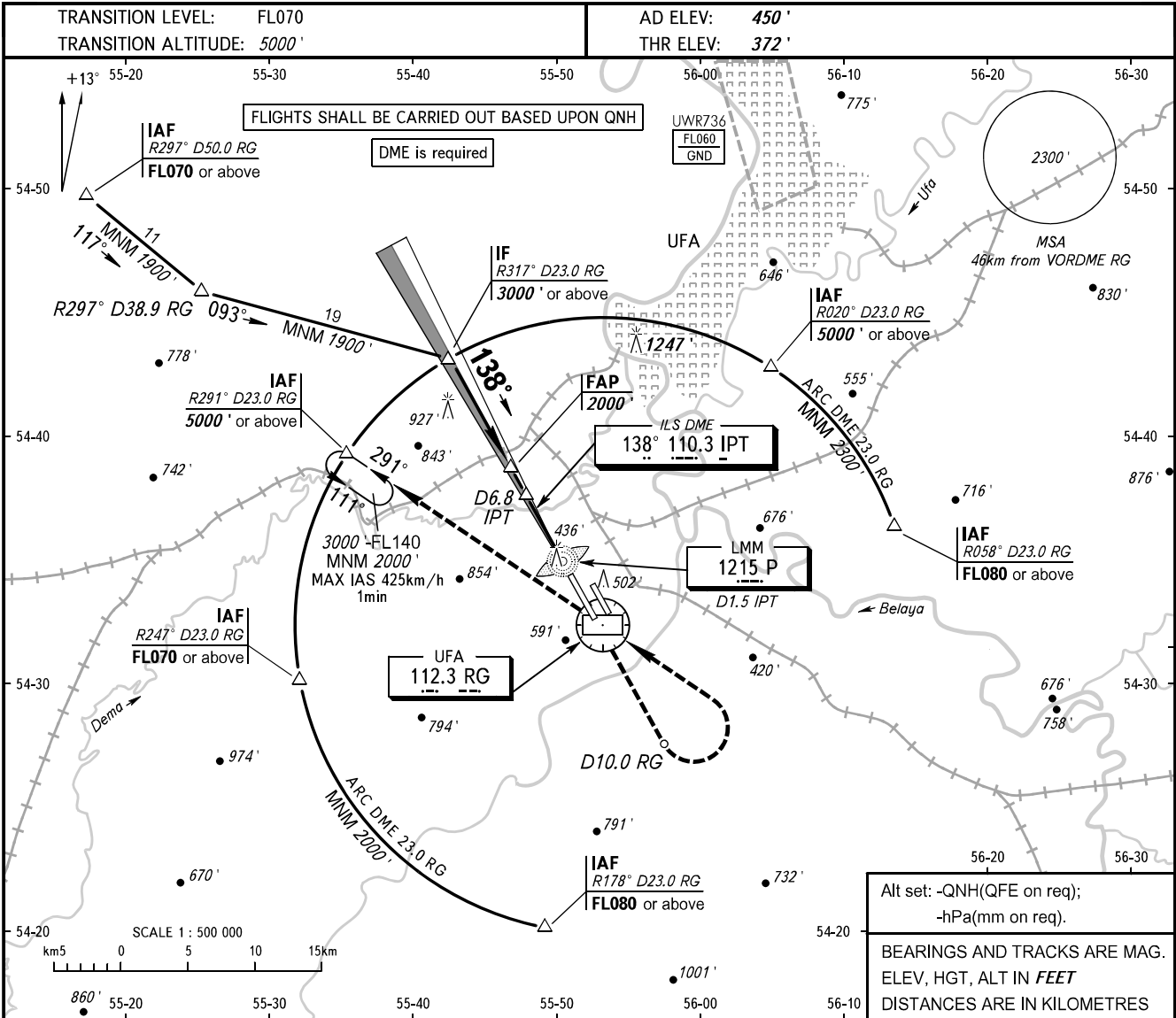


**INSTRUMENT
APPROACH
CHART - ICAO**

RADAR **120.900**

UFA, RUSSIA
UFA
ILS Y RWY 14R CAT I/II



OCA(H)		A	B	C	D
Straight-in	CAT I	563' (191')	576' (204')	584' (212')	594' (222')
	CAT II	475' (104')	493' (121')	504' (133')	519' (147')
	GP INOP	740' (370')	740' (370')	740' (370')	740' (370')
Approach					
Circling		890' (440')	950' (510')	1050' (600')	1260' (810')

WARNING
Flying birds can be expected in take-off, landing areas and on final approach segment.

GROUND SPEED	km/h	150	180	210	240	270	300	330	360	390	420	450
RATE OF DESCENT	m/s	2.2	2.6	3.0	3.5	3.9	4.3	4.8	5.2	5.6	6.1	6.5

CHANGE: NIL