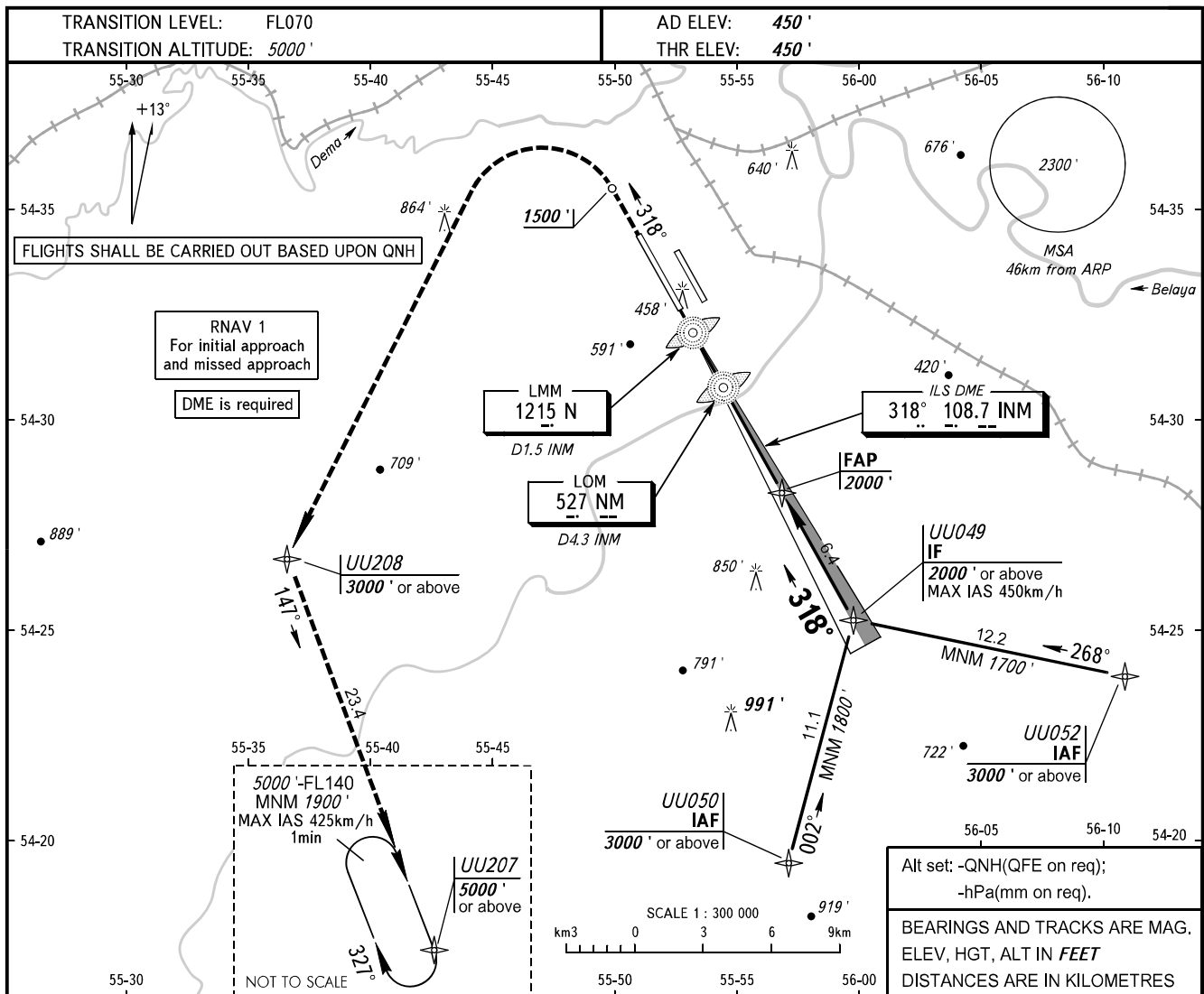


**INSTRUMENT
APPROACH
CHART - ICAO**

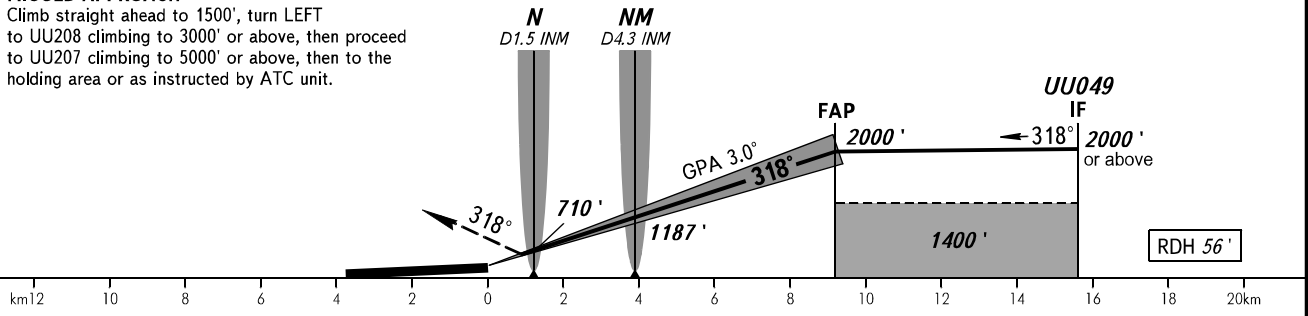
RADAR 120.900

UFA, RUSSIA
UFA
ILS Z RWY 32L CAT I/II



MISSED APPROACH

Climb straight ahead to 1500', turn LEFT to UU208 climbing to 3000' or above, then proceed to UU207 climbing to 5000' or above, then to the holding area or as instructed by ATC unit.



OCA(H)		A	B	C	D								
Straight-in	CAT I	609' (159')	621' (171')	630' (180')	640' (190')								
	CAT II	515' (64')	532' (83')	550' (100')	565' (115')								
Approach	GP INOP	810' (360')	810' (360')	810' (360')	810' (360')								
Circling		890' (440')	950' (510')	1050' (600')	1260' (810')								
GROUND SPEED		km/h	150	180	210	240	270	300	330	360	390	420	450
RATE OF DESCENT		m/s	2.2	2.6	3.0	3.5	3.9	4.3	4.8	5.2	5.6	6.1	6.5

WARNING

Flying birds can be expected in take-off, landing areas and on final approach segment.

CHANGE: OCA(H), UU207 ALT