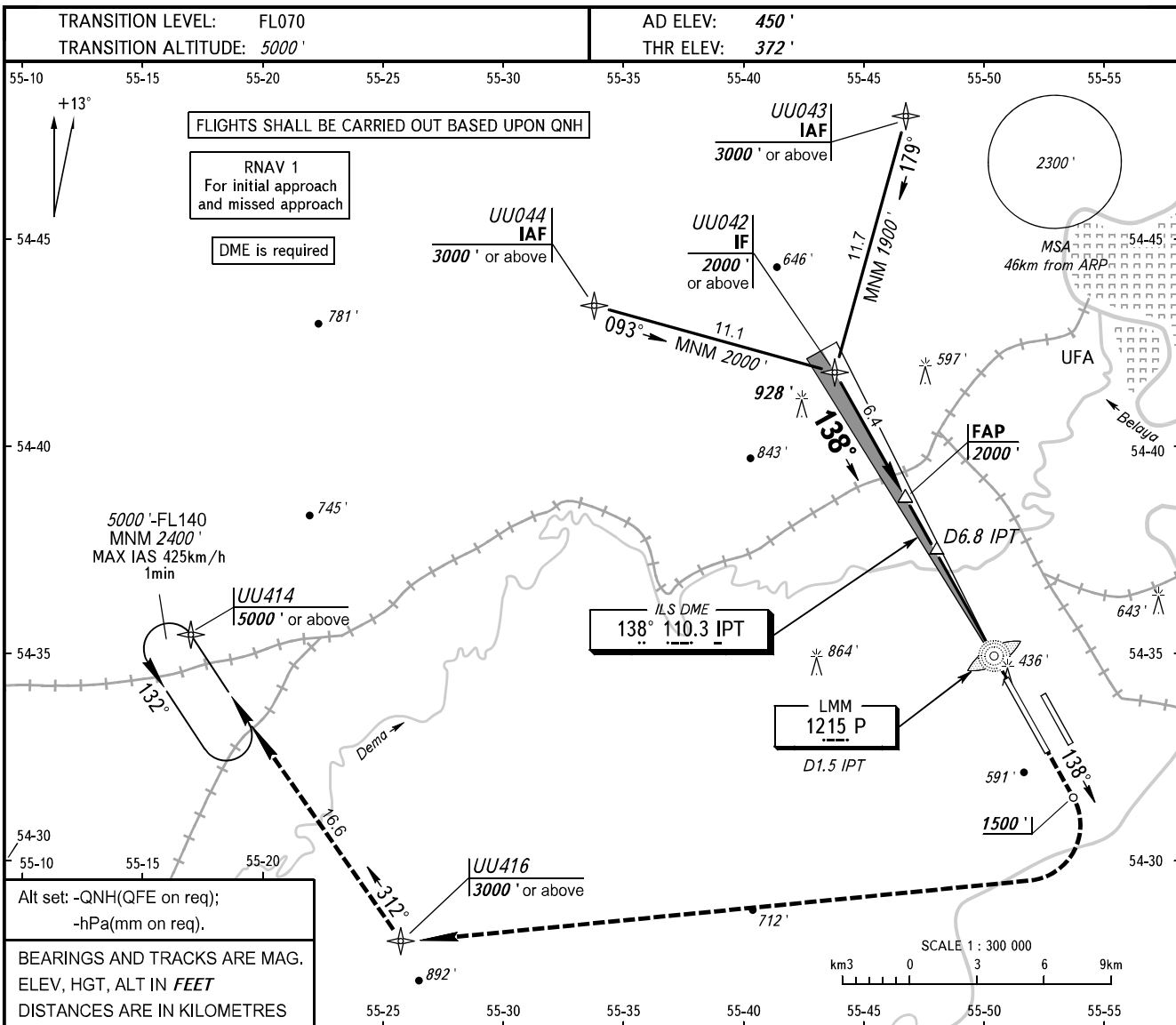


**INSTRUMENT  
APPROACH  
CHART - ICAO**

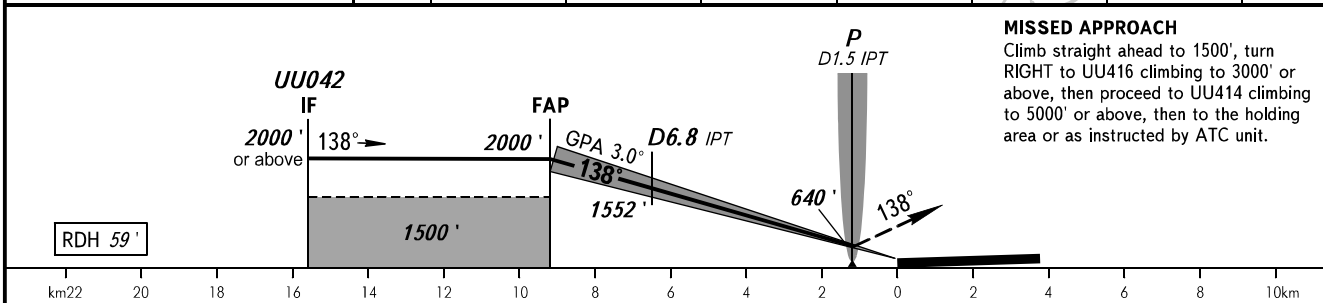
RADAR 120.900

**UFA, RUSSIA**  
UFA  
ILS Z RWY 14R CAT I/II



Alt set: -QNH(QFE on req);  
-hPa(mm on req).

BEARINGS AND TRACKS ARE MAG.  
ELEV, HGT, ALT IN FEET  
DISTANCES ARE IN KILOMETRES



**MISSED APPROACH**  
Climb straight ahead to 1500', turn  
RIGHT to UU416 climbing to 3000'  
or above, then proceed to UU414  
climbing to 5000' or above, then to the holding  
area or as instructed by ATC unit.

OCA(H)		A	B	C	D								
Straight-in Approach	<b>CAT I</b>	563' (191')	576' (204')	584' (212')	594' (222')								
	<b>CAT II</b>	475' (104')	493' (121')	504' (133')	519' (147')								
	<b>GP INOP</b>	740' (370')	740' (370')	740' (370')	740' (370')								
Circling		890' (440')	950' (510')	1050' (600')	1260' (810')								
GROUND SPEED		km/h	150	180	210	240	270	300	330	360	390	420	450
RATE OF DESCENT		m/s	2.2	2.6	3.0	3.5	3.9	4.3	4.8	5.2	5.6	6.1	6.5

**WARNING**  
Flying birds can be expected in take-off,  
landing areas and on final approach segment.