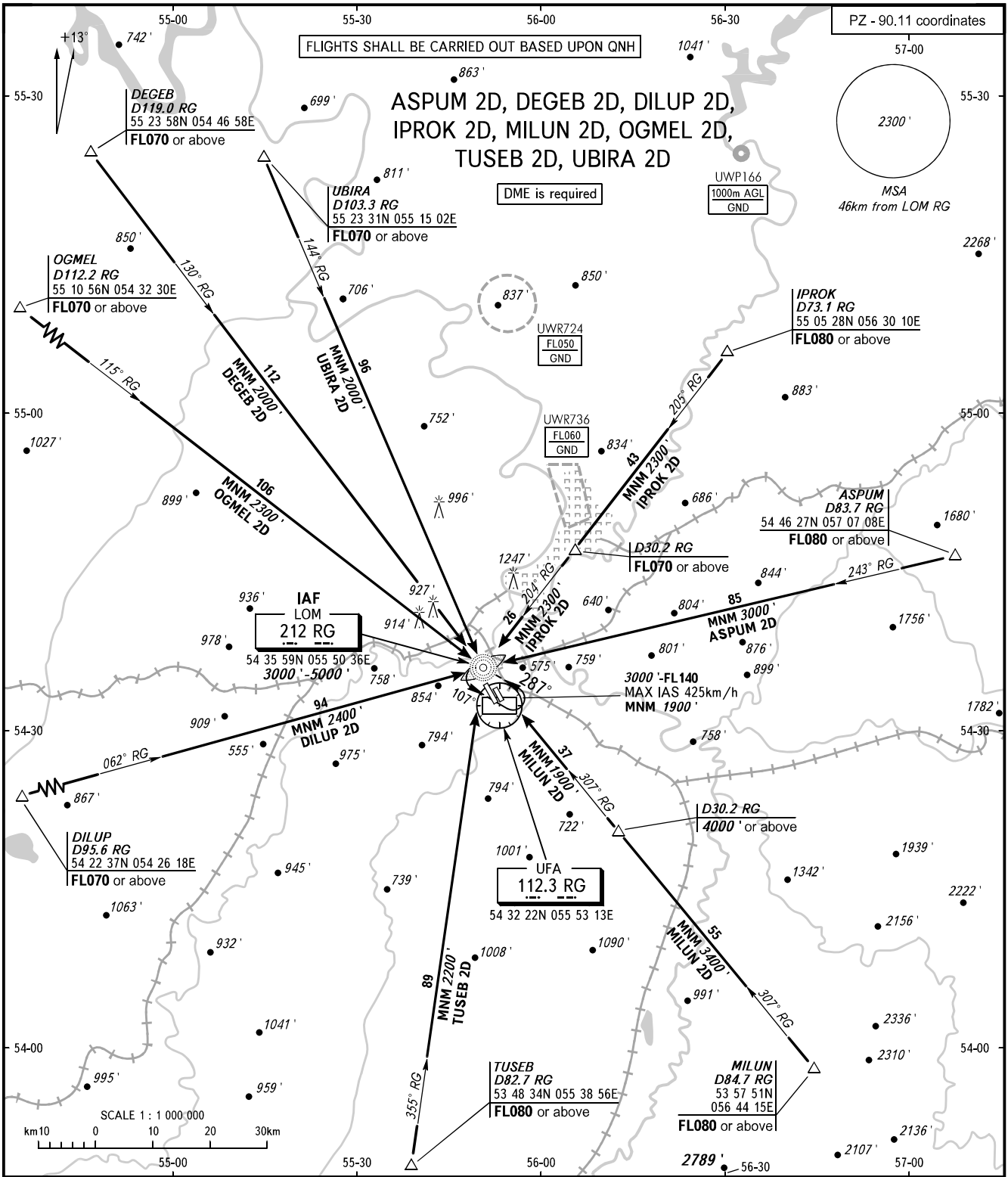


STANDARD ARRIVAL CHART  
INSTRUMENT (STAR) - ICAO

TRANSITION  
LEVEL : FL070

UFA, RUSSIA  
UFA  
RWY 14L



APPROACH 126.000  
RADAR 120.900

**WARNING**  
Flying birds can be expected in take-off,  
landing areas and on final approach segment.

BEARINGS AND TRACKS ARE MAGNETIC  
ALTITUDES AND ELEVATIONS ARE IN FEET  
DISTANCES ARE IN KILOMETRES

CHANGE: LOM COORD