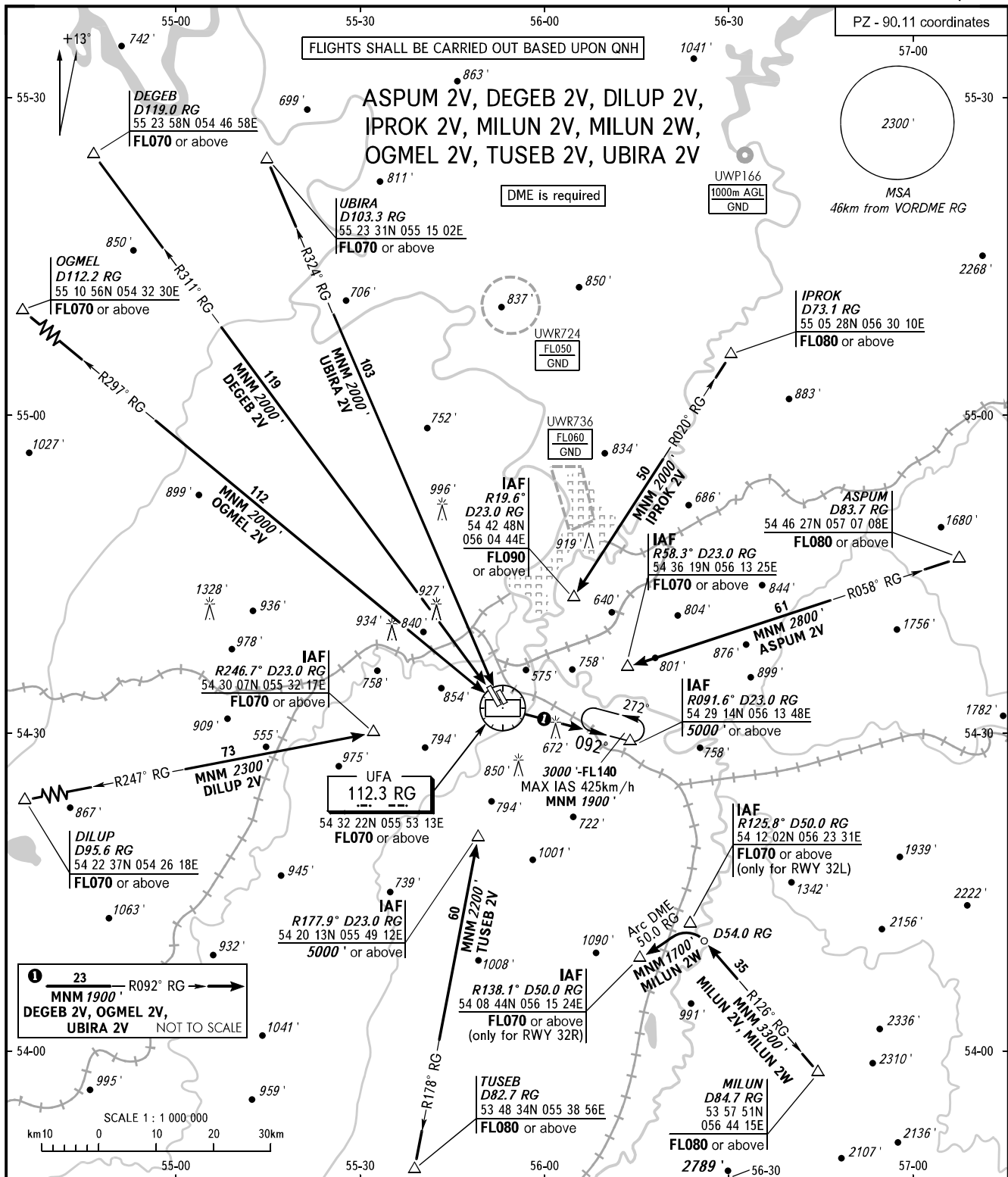


STANDARD ARRIVAL CHART
INSTRUMENT (STAR) - ICAO

TRANSITION
LEVEL : **FL070**

UFA, RUSSIA
UFA
RWY 32L, 32R



APPROACH **126.000**
RADAR **120.900**

NOTE:
1. MILUN 2W only for RWY 32R.
2. MILUN 2V only for RWY 32L.

WARNING
Flying birds can be expected in take-off, landing areas and on final approach segment.

BEARINGS AND TRACKS ARE MAGNETIC
ALTITUDES AND ELEVATIONS ARE IN FEET
DISTANCES ARE IN KILOMETRES

CHANGE: UWR724