

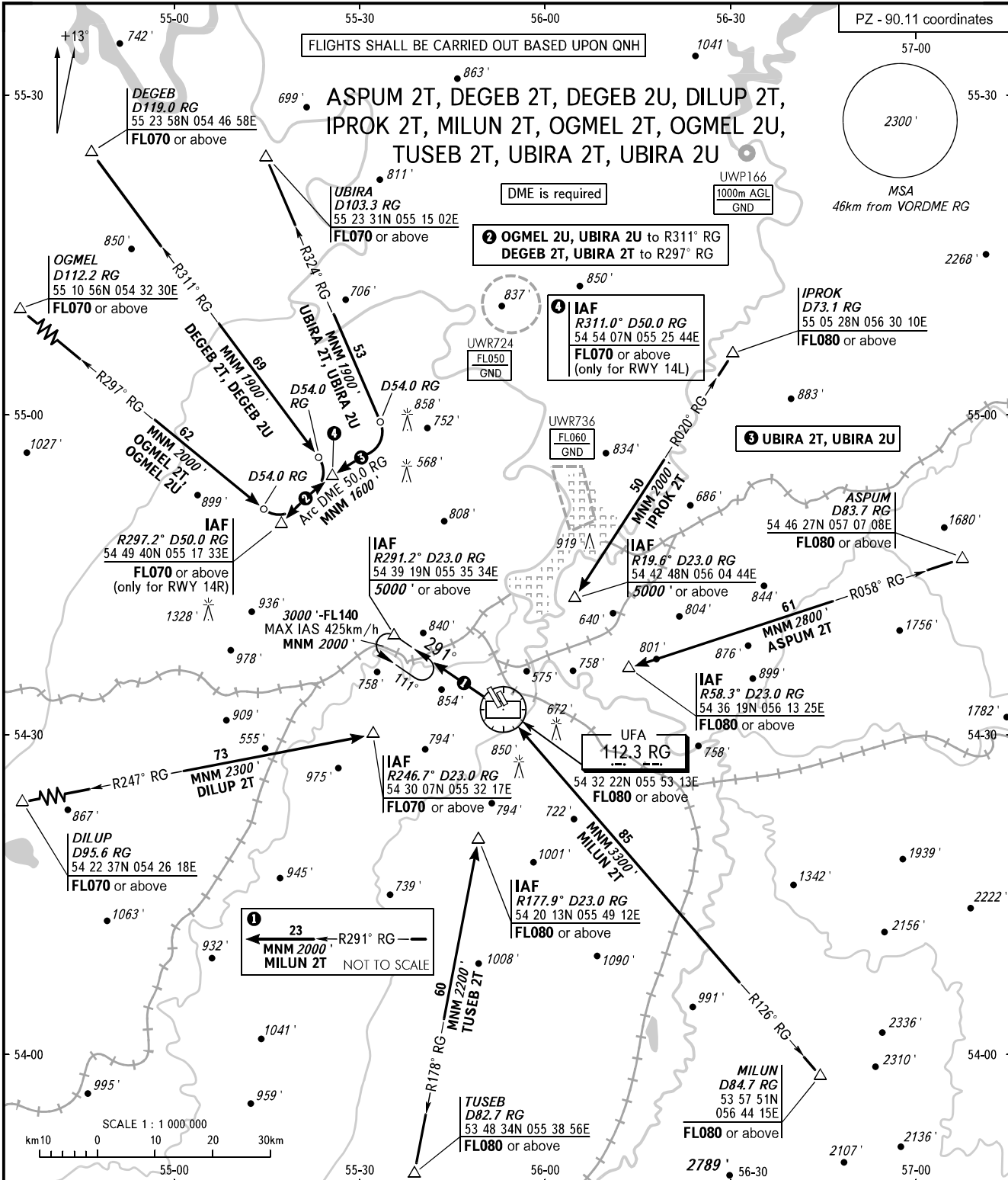
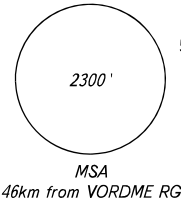
STANDARD ARRIVAL CHART INSTRUMENT (STAR) - ICAO

UFA, RUSSIA UFA RWY 14L, 14R

TRANSITION
LEVEL: **FL070**

FLIGHTS SHALL BE CARRIED OUT BASED UPON QNH

PZ - 90.11 coordinates



APPROACH RADAR 126.000
120.900

NOTE:
1. OGMEL 2T, DEGEB 2T, UBIRA 2T only for RWY 14R.
2. OGMEL 2U, DEGEB 2U, UBIRA 2U only for RWY 14L.

WARNING
Flying birds can be expected in take-off, landing areas and on final approach segment.

BEARINGS AND TRACKS ARE MAGNETIC
ALTITUDES AND ELEVATIONS ARE IN FEET
DISTANCES ARE IN KILOMETRES

CHANGE:UWR724