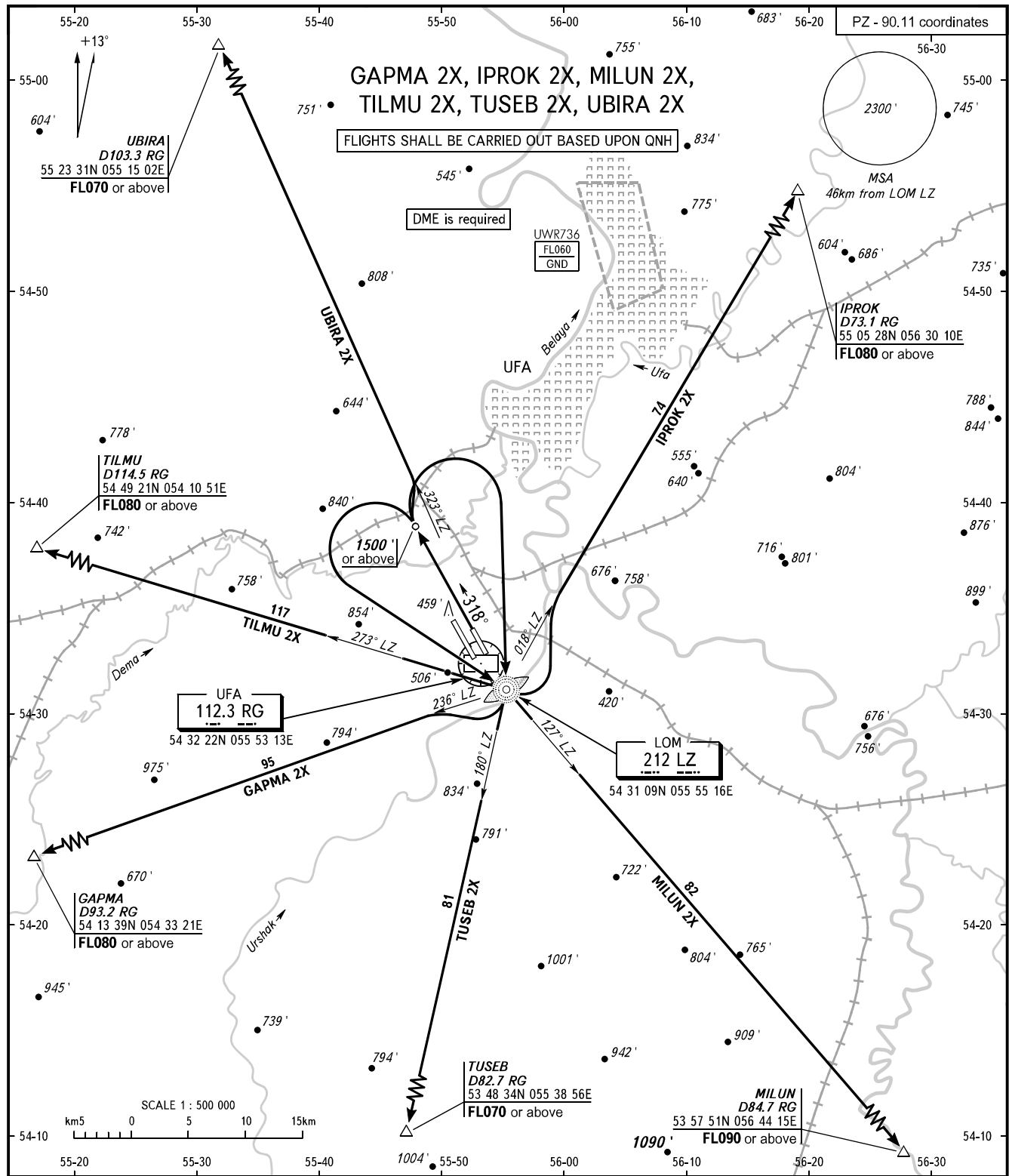


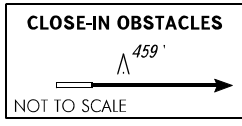
STANDARD DEPARTURE CHART
INSTRUMENT (SID) - ICAO

TRANSITION
ALTITUDE : 5000'

UFA, RUSSIA
UFA
RWY 32R



RADAR APPROACH 120.900
APPROACH 126.000



- WARNING:**
1. Turn before DER is PROHIBITED.
 2. SID IPROK 2X: MNM climb gradient is 4.1% up to FL070 due to airspace structure.
 3. Flying birds can be expected in take-off, landing areas and on final approach segment.

BEARINGS AND TRACKS ARE MAGNETIC
ALTITUDES AND ELEVATIONS ARE IN FEET
DISTANCES ARE IN KILOMETRES