

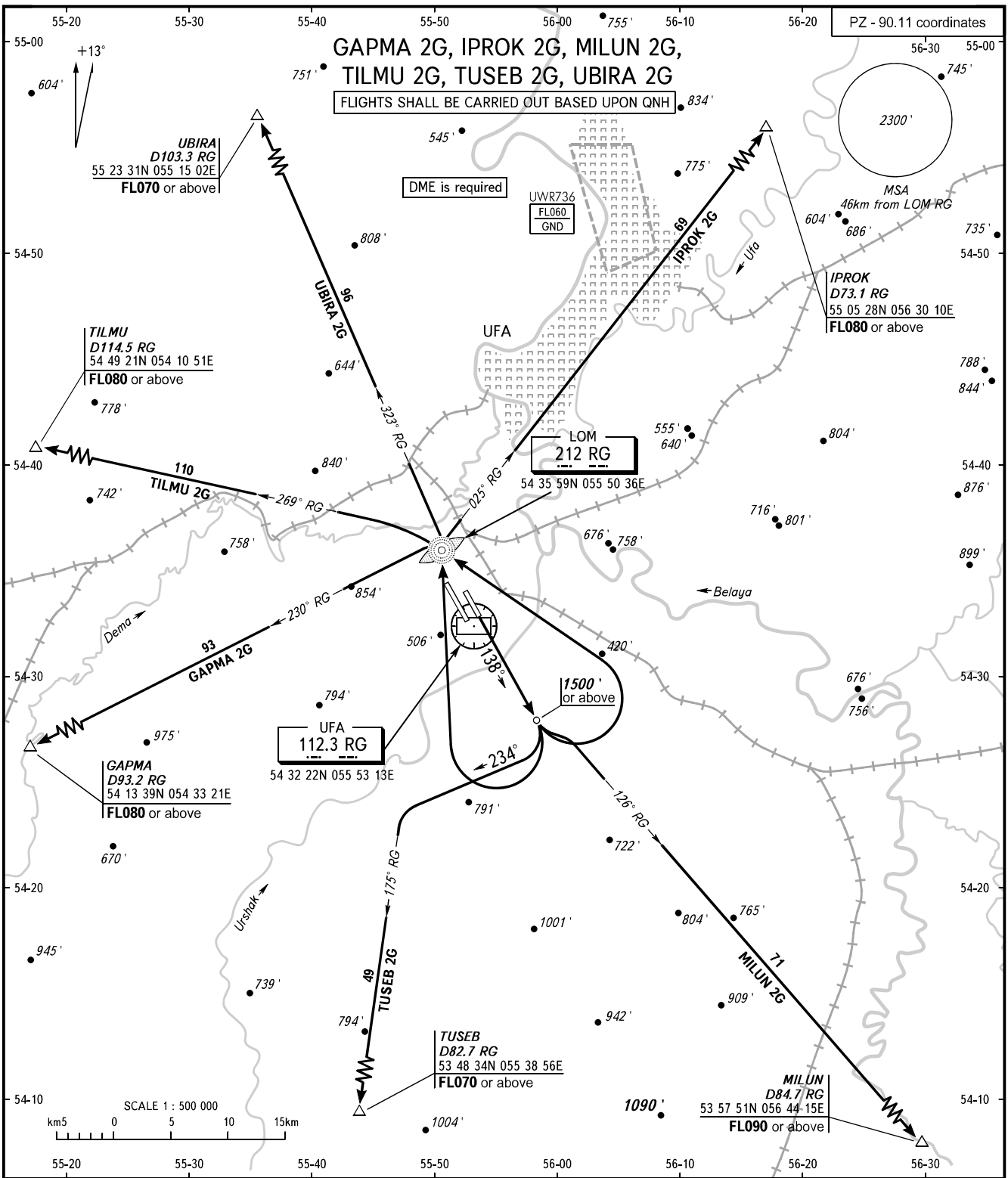
STANDARD DEPARTURE CHART  
INSTRUMENT (SID) - ICAO

TRANSITION  
ALTITUDE : 5000'

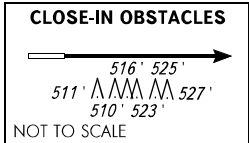
UFA, RUSSIA

UFA

RWY 14L



RADAR APPROACH 120.900  
 126.000



- WARNING:**
1. Turn before DER is PROHIBITED.
  2. Flying birds can be expected in take-off, landing areas and on final approach segment.
  3. SID IPROK 2G: MNM climb gradient is 4.5% up to FL070 due to the airspace structure.

BEARINGS AND TRACKS ARE MAGNETIC  
 ALTITUDES AND ELEVATIONS ARE IN FEET  
 DISTANCES ARE IN KILOMETRES

CHANGE: LOM COORD