

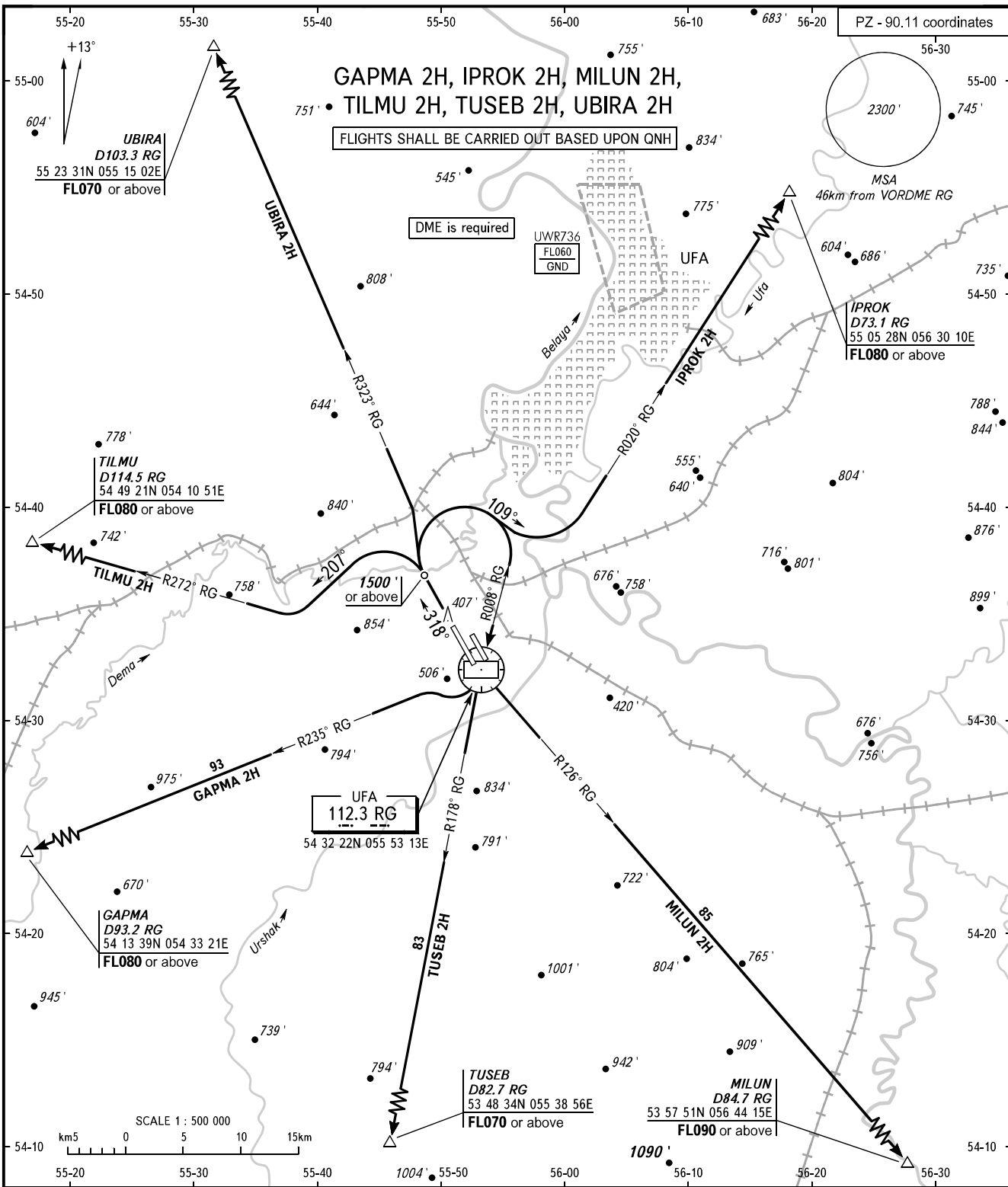
STANDARD DEPARTURE CHART  
INSTRUMENT (SID) - ICAO

TRANSITION  
ALTITUDE : 5000'

UFA, RUSSIA

UFA

RWY 32L



RADAR APPROACH 120.900  
126.000

- WARNING:**
1. Turn before DER is PROHIBITED.
  2. SID IPROK 2H: MNM climb gradient is 6.2% up to FL070 due to the airspace structure.
  3. Flying birds can be expected in take-off, landing areas and on final approach segment.

BEARINGS AND TRACKS ARE MAGNETIC  
ALTITUDES AND ELEVATIONS ARE IN FEET  
DISTANCES ARE IN KILOMETRES

CHANGE: New chart