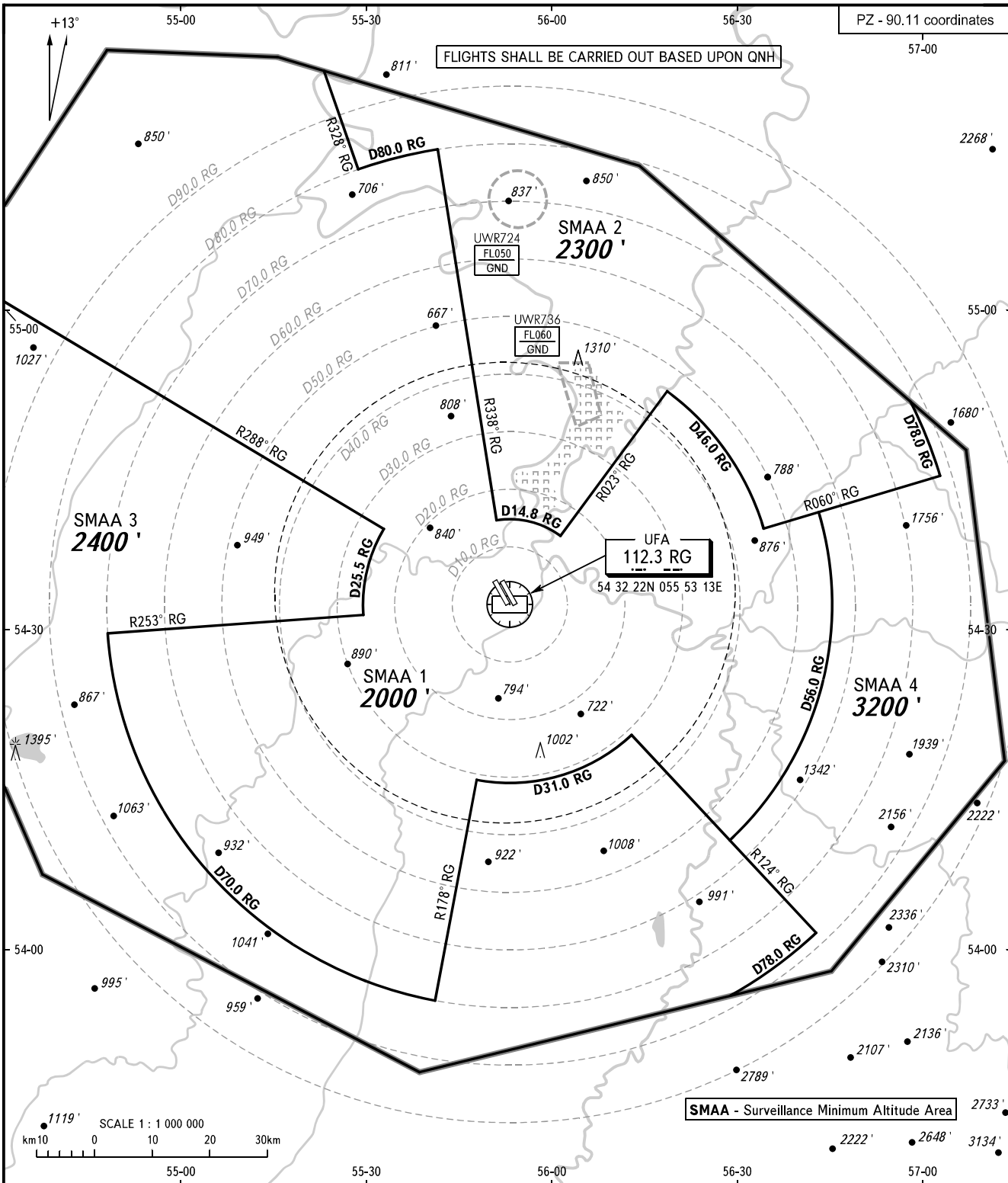


ATC SURVEILLANCE MINIMUM  
ALTITUDE CHART - ICAO

ELEV  
**450'**  
TRANSITION LEVEL: **FL070**  
TRANSITION ALTITUDE: **5000'**

UFA, RUSSIA

UFA



APPROACH RADAR **126.000**  
**120.900**

**NOTE:**

1. The chart may only be used for cross-checking of altitudes assigned while the aircraft is under radar control.
2. When vectoring is carried out under low-temperature conditions, minimum vectoring altitudes for IFR flight must be corrected by altimeter temperature correction.

BEARINGS AND TRACKS ARE MAGNETIC  
ALTITUDES AND ELEVATIONS ARE IN FEET  
DISTANCES ARE IN KILOMETRES

UFA, RUSSIA  
UFA

SURVEILLANCE MINIMUM ALTITUDE AREAS		
IDENT	MNM ALT	LATERAL LIMITS (PZ-90.11 coordinates)
UWUU SMAA 1	2000'	552214.7N 0552242.1E – 551303.8N 0552825.3E – then clockwise by arc of a circle radius of 80 KM centred at (543222.2N 0555313.0E) to 551457.7N 0554124.8E – 544015.1N 0555103.9E – then clockwise by arc of a circle radius of 14.8 KM centred at (543222.2N 0555313.0E) to 543847.1N 0560123.5E – 545216.6N 0561846.0E – then clockwise by arc of a circle radius of 46 KM centred at (543222.2N 0555313.0E) to 543921.3N 0563412.4E - 544050.4N 0564307.8E - then clockwise by arc of a circle radius of 56 KM centred at (543222.2N 0555313.0E) to 541012.5N 0562818.3E - 542007.4N 0561243.1E – then clockwise by arc of a circle radius of 31.0 KM centred at (543222.2N 0555313.0E) to 541556.9N 0554755.1E – 535516.3N 0554120.7E – then clockwise by arc of a circle radius of 70 KM centred at (543222.2N 0555313.0E) to 542922.8N 0544835.5E – 543120.8N 0552938.5E – then clockwise by arc of a circle radius of 25.5 KM centred at (543222.2N 0555313.0E) to 543924.6N 0553252.6E – 550239.1N 0542337.3E – 552358.0N 0544658.0E – 552331.0N 0551502.0E – 552214.7N 0552242.1E
UWUU SMAA 2	2300'	543921.3N 0563412.4E – then anticlockwise by arc of a circle radius of 46 KM centred at (543222.2N 0555313.0E) to 545216.6N 0561846.0E – 543847.1N 0560123.5E – then anticlockwise by arc of a circle radius of 14.8 KM centred at (543222.2N 0555313.0E) to 544015.1N 0555103.9E – 551457.7N 0554124.8E – then anticlockwise by arc of a circle radius of 80 KM centred at (543222.2N 0555313.0E) to 551303.8N 0552825.3E – 552214.7N 0552242.1E – 551324.0N 0561428.0E – 545105.0N 0565812.8E - then clockwise by arc of a circle radius of 78 KM centred at (543222.2N 0555313.0E) to 544404.4N 0570249.9E – 543921.3N 0563412.4E
UWUU SMAA 3	2400'	550239.1N 0542337.3E – 543924.6N 0553252.6E – then anticlockwise by arc of a circle radius of 25.5 KM centred at (543222.2N 0555313.0E) to 543120.8N 0552938.5E – 542922.8N 0544835.5E – then anticlockwise by arc of a circle radius of 70 KM centred at (543222.2N 0555313.0E) to 535516.3N 0554120.7E - 541556.9N 0554755.1E - then anticlockwise by arc of a circle radius of 31.0 KM centred at (543222.2N 0555313.0E) to 542007.4N 0561243.1E – 540127.3N – 0564155.1E then clockwise by arc of a circle radius of 78 KM centred at (543222.2N 0555313.0E) to 535536.6N 0562803.1E – 534834.0N 0553856.0E – 540642.4N 0543845.3E – 544458.0N 0540835.0E – 545225.0N 0541235.0E – 550239.1N 0542337.3E
UWUU SMAA 4	3200'	545105.0N 0565812.8E – 544627.0N 0570708.0E – 541717.0N 0571225.0E – 535751.0N 0564415.0E - 535536.6N 0562803.1E - then anticlockwise by arc of a circle radius of 78 km centred at (543222.2N 0555313.0E) to 540127.3N 0564155.1E – 541012.5N 0562818.3E – then anticlockwise by arc of a circle radius of 56 km centred at (543222.2N 0555313.0E) to 544050.4N 0564307.8E – 544404.4N 0570249.9E – then anticlockwise by arc of a circle radius of 78 km centred at (543222.2N 0555313.0E) to 545105.0N 0565812.8E