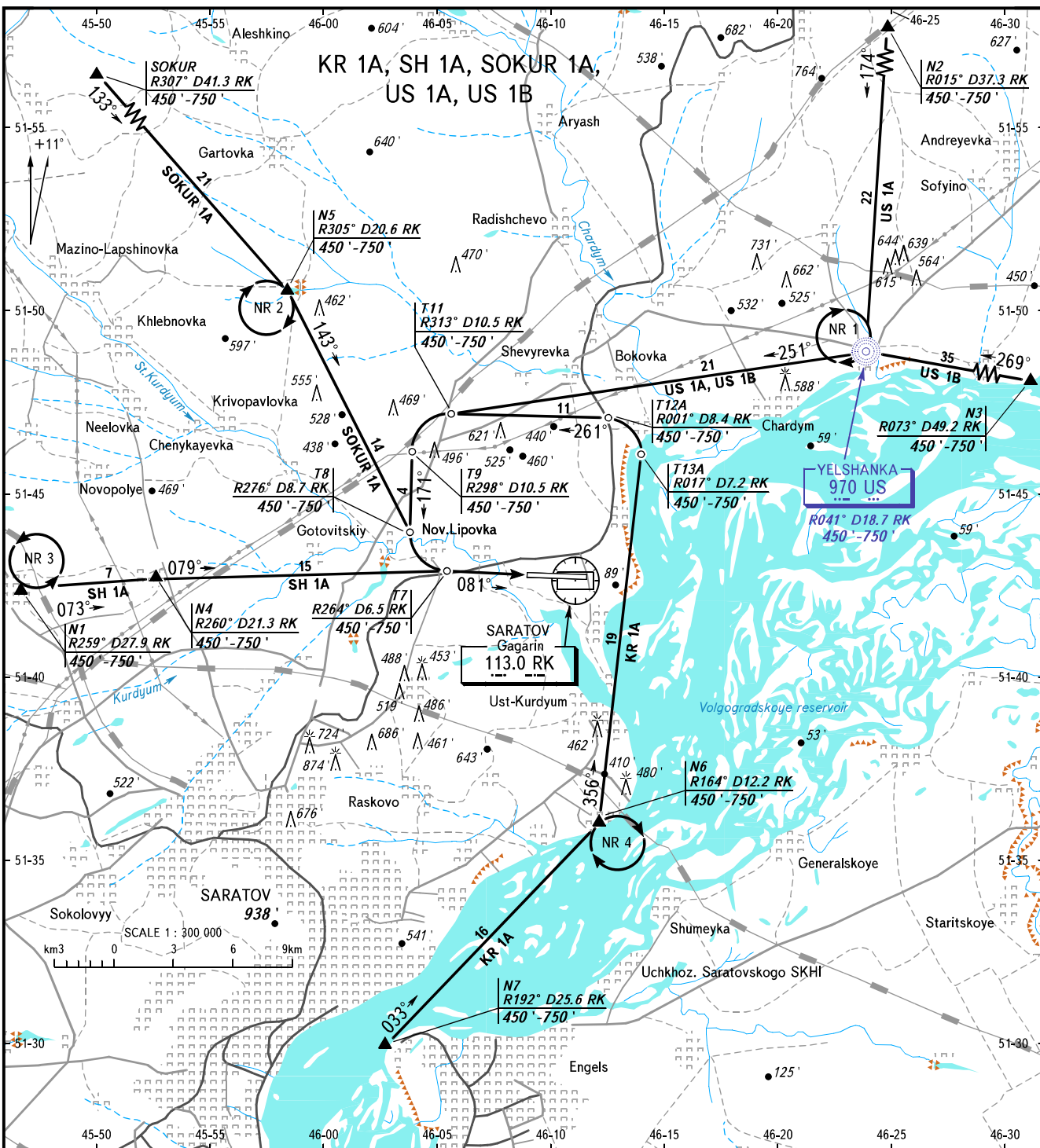


VFR
ARRIVAL
CHART

SARATOV, RUSSIA
GAGARIN
RWY 08

TRANSITION
LEVEL: **1**



GAGARIN APPROACH 121.625
GAGARIN RADAR 130.300
GAGARIN TOWER 122.850

NR 1 Holding altitude for one-way traffic is by ATC instruction, RIGHT turns.
NR 2 Holding altitude is by ATC instruction, RIGHT turns.
NR 3 Holding altitude is by ATC instruction, LEFT turns.
NR 4 Holding altitude is by ATC instruction, RIGHT turns.

1 TRANSITION LEVEL:
- FL040 when QNH is 760mm mercury column or above;
- FL050 when QNH is 733mm mercury column or above but less than 760mm mercury column;
- FL060 when QNH is less than 733mm mercury column.

BEARINGS AND TRACKS ARE MAGNETIC
ALTITUDES AND ELEVATIONS ARE IN FEET
DISTANCES ARE IN KILOMETRES

Altitudes below the transition level shall be assigned by ATS unit and maintained by the flight crew in feet based upon QNH in hectopascals (hPa). QFE value is issued by Radar controller (Gagarin-Radar) on flight crew's request. Flight crews of ACFT not equipped for maintaining the altitude in feet or based upon hPa must have conversion tables which allow to carry out the controller's instruction to maintain altitude.

CHANGE: SOKUR