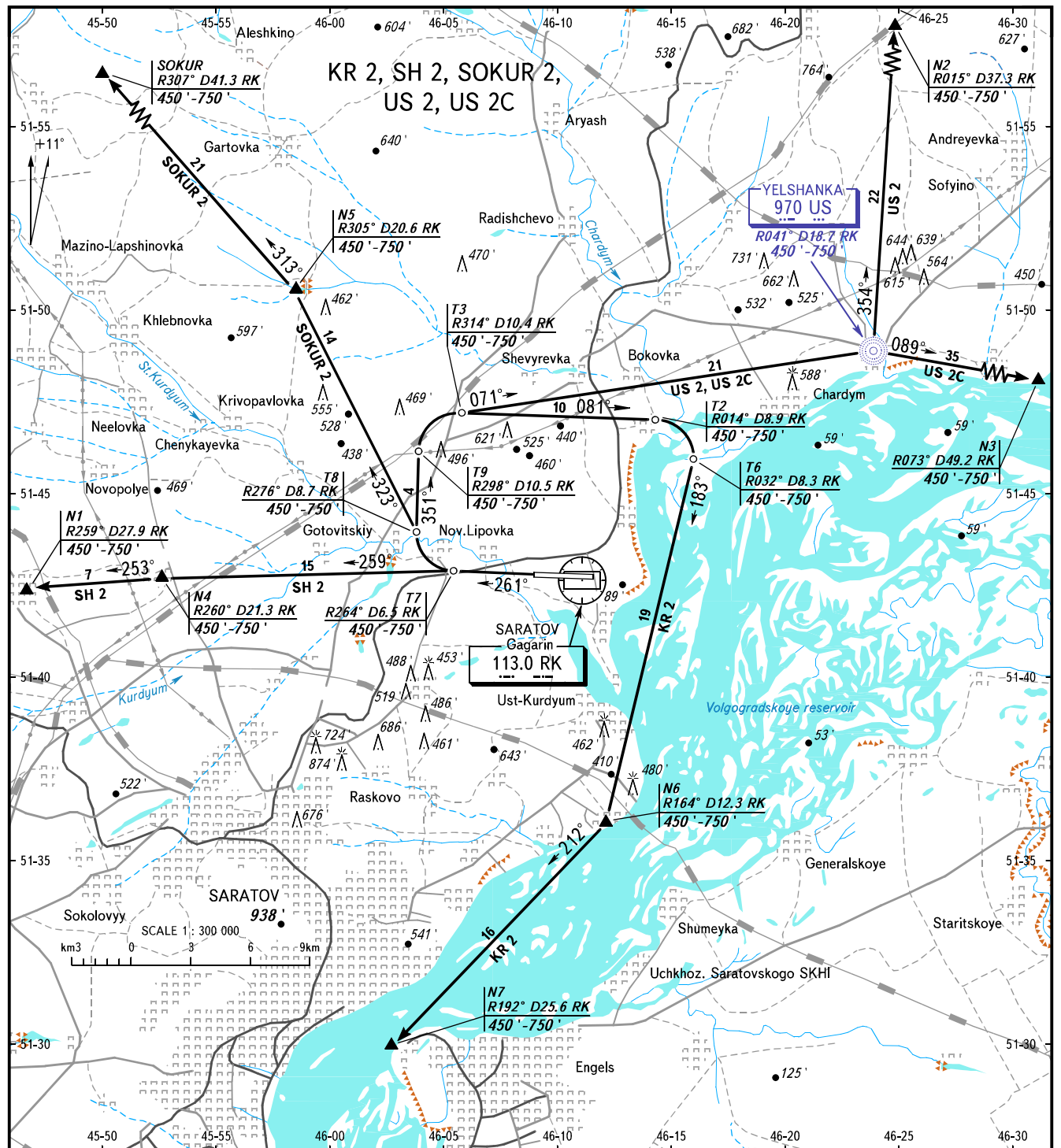


VFR  
DEPARTURE  
CHART

SARATOV, RUSSIA  
GAGARIN  
RWY 26

TRANSITION  
ALTITUDE : 3000'



GAGARIN TOWER 122.850  
GAGARIN RADAR 130.300  
GAGARIN APPROACH 121.625

Altitudes below the transition level shall be assigned by ATS unit and maintained by the flight crew in feet based upon QNH in hectopascals (hPa). QFE value is issued by Radar controller (Gagarin-Radar) on flight crew's request. Flight crews of ACFT not equipped for maintaining the altitude in feet or based upon hPa must have conversion tables which allow to carry out the controller's instruction to maintain altitude.

BEARINGS AND TRACKS ARE MAGNETIC  
ALTITUDES AND ELEVATIONS ARE IN FEET  
DISTANCES ARE IN KILOMETRES