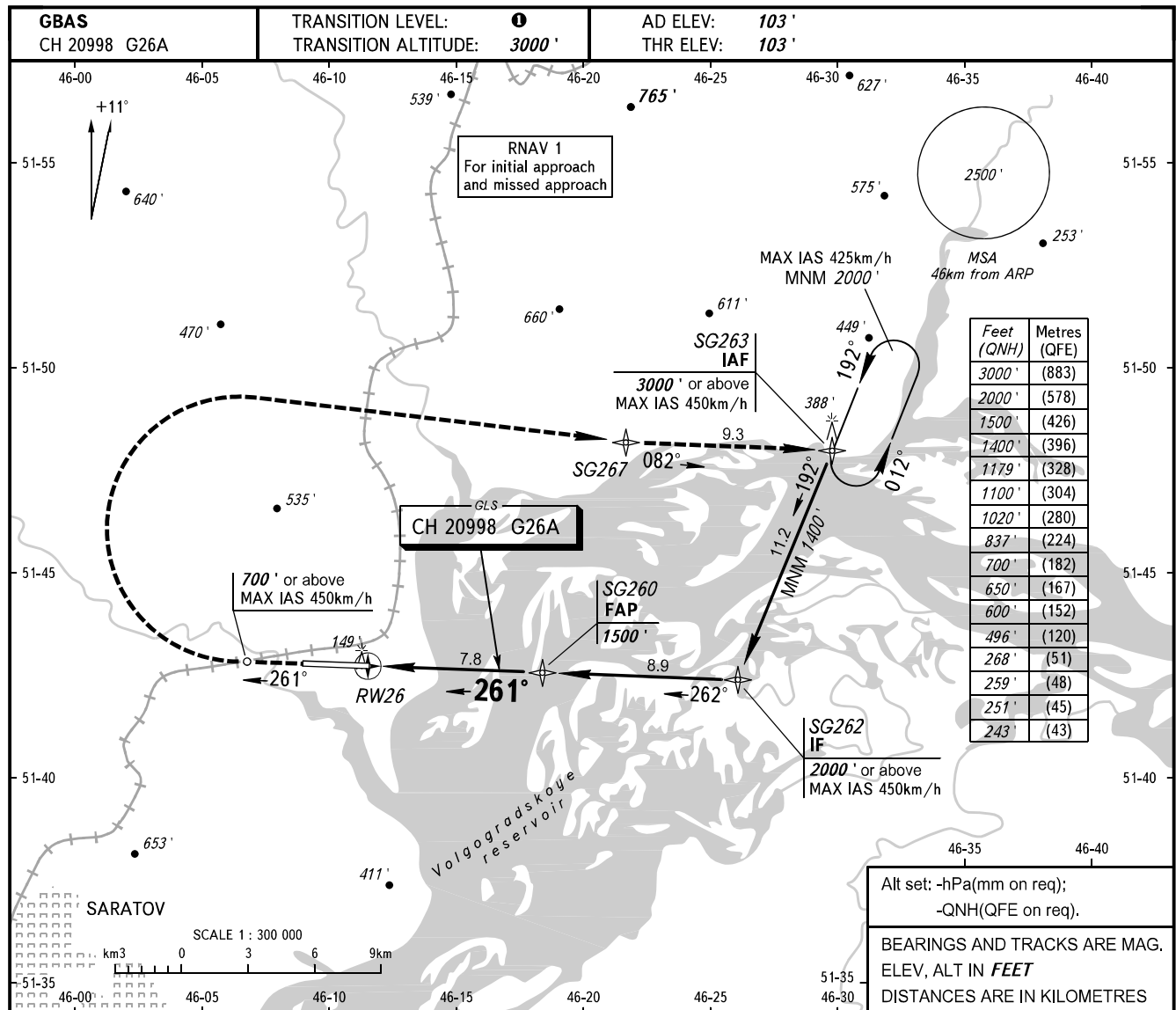


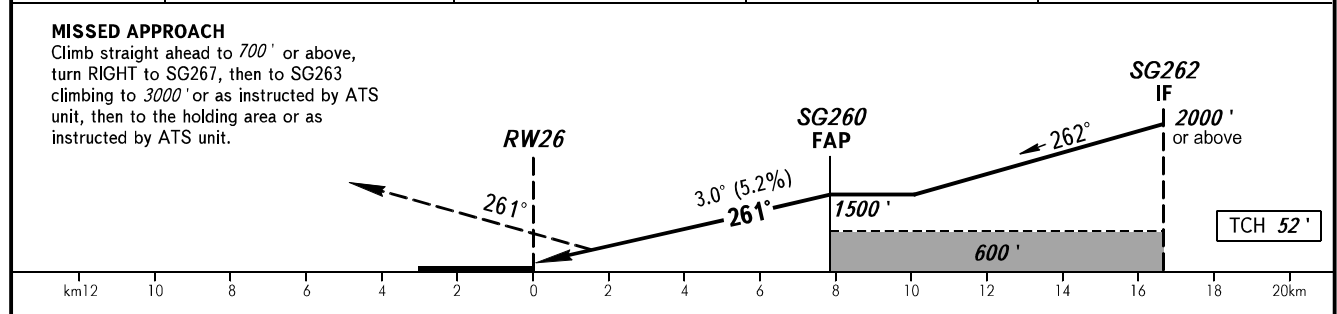
**INSTRUMENT
APPROACH
CHART - ICAO**

GAGARIN RADAR	130.300
GAGARIN TOWER	122.850

**SARATOV, RUSSIA
GAGARIN
GLS RWY 26**



DIST to RWY 26	2.0	4.0	6.0	7.8
ALT 3.0° APCH	496'	837'	1179'	1500'



OCA(H)		A	B	C	D
Straight-in	Approach	243' (140')	251' (148')	259' (156')	268' (165')
	Circling	650' (550')	700' (600')	1020' (920')	1020' (920')

① TRANSITION LEVEL:
 - FL040 when QNH is 760mm mercury column or above;
 - FL050 when QNH is 733mm mercury column or above but less than 760mm mercury column;
 - FL060 when QNH is less than 733mm mercury column.

Visual manoeuvring SOUTH of AD is PROHIBITED.