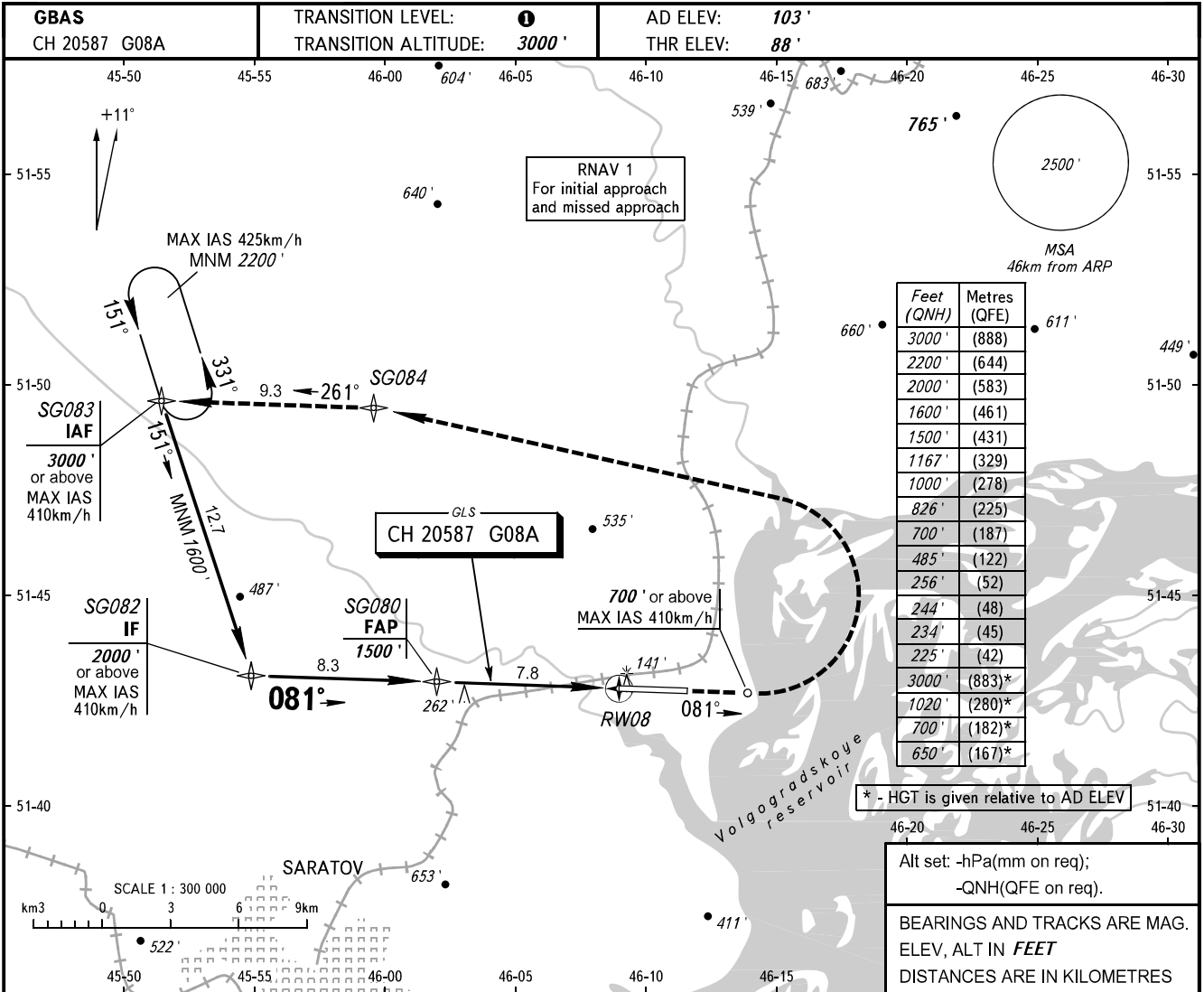


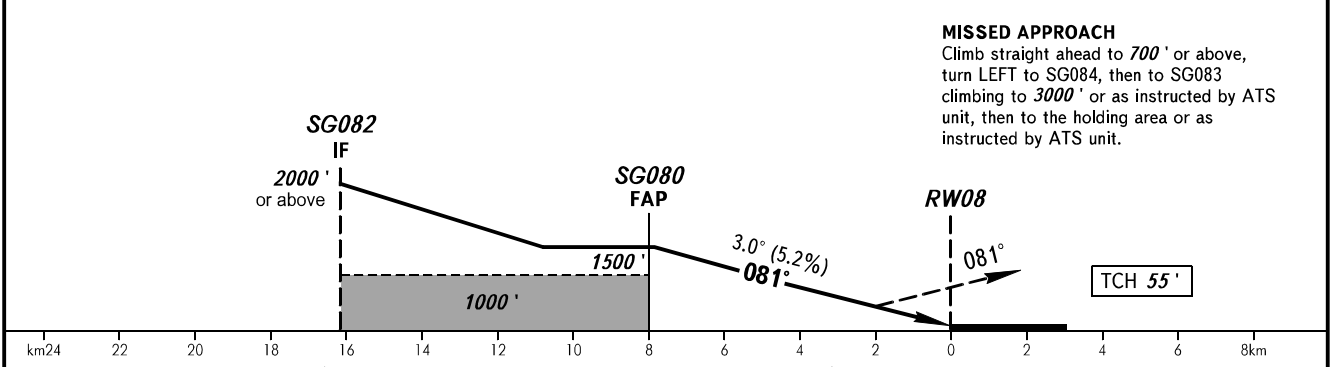
**INSTRUMENT  
APPROACH  
CHART - ICAO**

**SARATOV, RUSSIA  
GAGARIN  
GLS RWY 08**

GAGARIN RADAR	130.300
GAGARIN TOWER	122.850



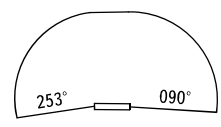
DIST to RWY 08	7.8	6.0	4.0	2.0
ALT 3.0° APCH	1500'	1167'	826'	485'



**MISSED APPROACH**  
Climb straight ahead to 700' or above, turn LEFT to SG084, then to SG083 climbing to 3000' or as instructed by ATS unit, then to the holding area or as instructed by ATS unit.

- 1** TRANSITION LEVEL:
- FL040 when QNH is 760mm mercury column or above;
  - FL050 when QNH is 733mm mercury column or above but less than 760mm mercury column;
  - FL060 when QNH is less than 733mm mercury column.

Visual manoeuvring SOUTH of AD is PROHIBITED.



CHANGE: GBAS, COM