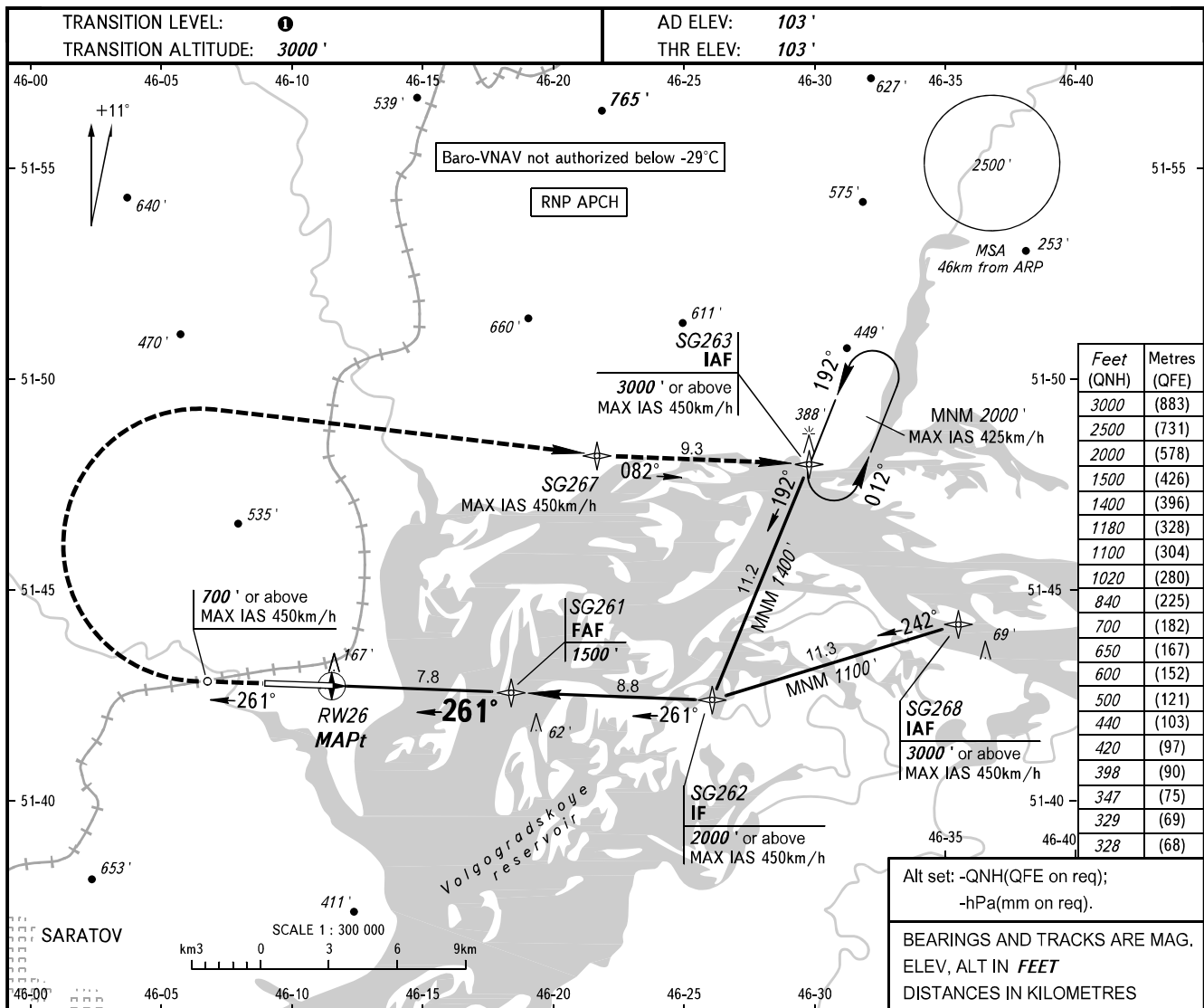


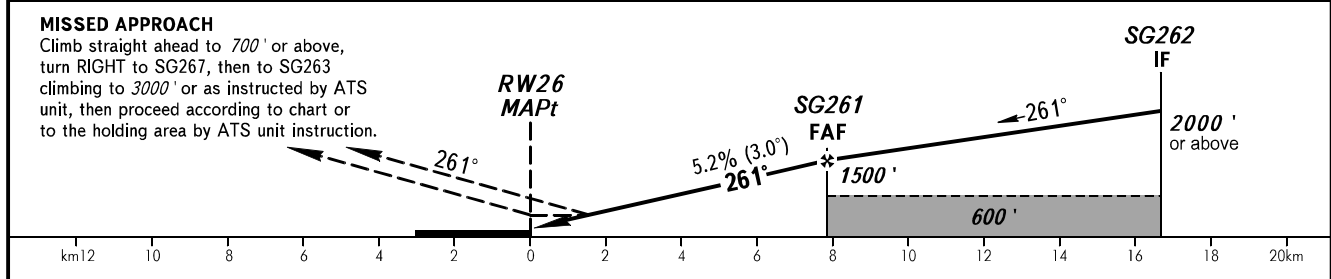
**INSTRUMENT  
APPROACH  
CHART - ICAO**

GAGARIN RADAR	130.300
GAGARIN TOWER	122.850

**SARATOV, RUSSIA  
GAGARIN  
RNP RWY 26**



DIST to RWY 26	2.0	4.0	6.0	7.8
ALTITUDE	500'	840'	1180'	1500'



OCA(H)		A	B	C	D
Straight-in	LNAV	420' (310')	420' (310')	420' (310')	440' (340')
	LNAV/VNAV	328' (225')	329' (226')	347' (244')	398' (295')
Approach					
Circling		650' (550')	700' (600')	1020' (920')	1020' (920')

**1** TRANSITION LEVEL:  
 - FLO40 when QNH is 1013 hPa (760mm mercury column) or above;  
 - FLO50 when QNH is 977 hPa (733mm mercury column) or above, but less than 1013 hPa (760mm mercury column);  
 - FLO60 when QNH is less than 977 hPa (733mm mercury column).  
 Visual manoeuvring south of AD is PROHIBITED.  
 MAPt at RW26.  
 Timing not authorized for defining MAPt.

GROUND SPEED	km/h	150	180	210	240	270	300	330	360	390	420	450
RATE OF DESCENT	m/s	2.2	2.6	3.0	3.5	3.9	4.3	4.8	5.2	5.6	6.1	6.5
RATE OF DESCENT	ft/m	427	512	597	682	768	853	938	1024	1109	1194	1280