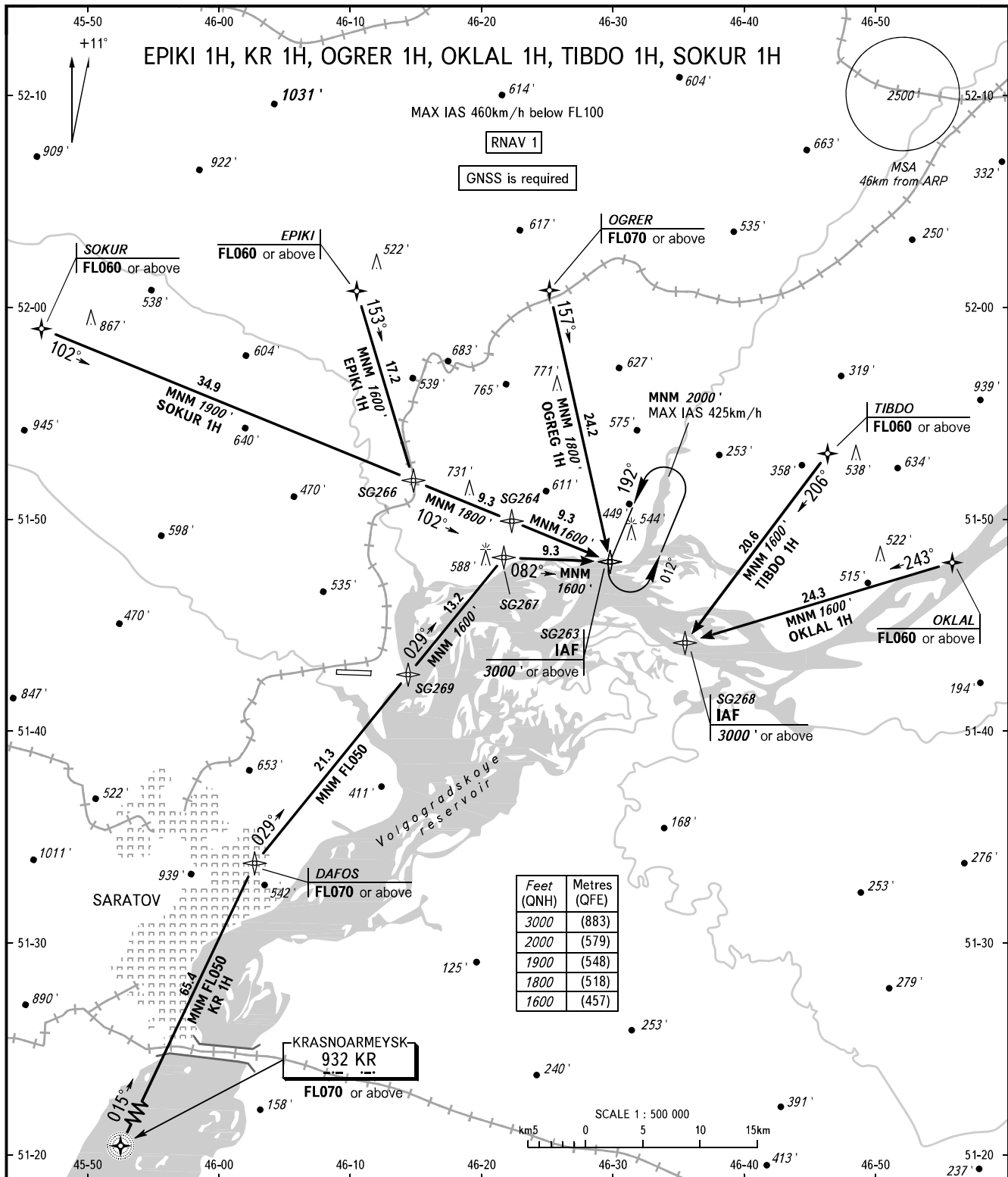


STANDARD ARRIVAL CHART
INSTRUMENT (STAR) - ICAO

SARATOV, RUSSIA
GAGARIN
RNAV RWY 26

TRANSITION
LEVEL: **1**



GAGARIN APPROACH **121.625**
GAGARIN RADAR **130.300**
GAGARIN TOWER **122.850**

1 TRANSITION LEVEL:

- FL040 when QNH is 1013 hPa (760mm mercury column) or above;
- FL050 when QNH is 977 hPa (733mm mercury column) or above, but less than 1013 hPa (760mm mercury column);
- FL060 when QNH is less than 977 hPa (733mm mercury column).

BEARINGS AND TRACKS ARE MAGNETIC
ALTITUDES AND ELEVATIONS IN FEET
DISTANCES IN KILOMETRES