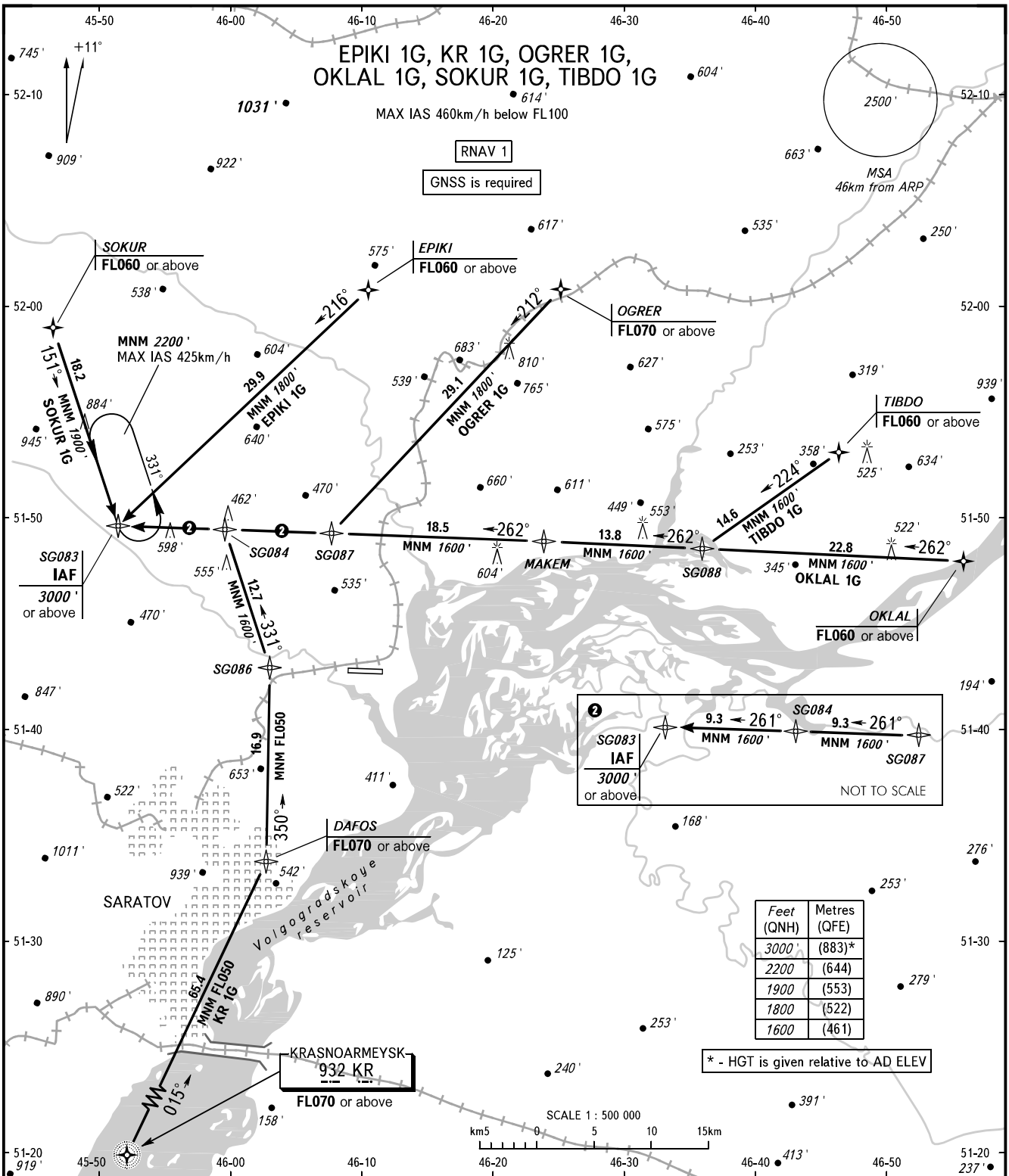


STANDARD ARRIVAL CHART  
INSTRUMENT (STAR) - ICAO

SARATOV, RUSSIA  
GAGARIN  
RNAV RWY 08

TRANSITION  
LEVEL: ①



GAGARIN APPROACH 121.625  
GAGARIN RADAR 130.300  
GAGARIN TOWER 122.850

① TRANSITION LEVEL:  
- FL040 when QNH is 1013 hPa (760mm mercury column) or above;  
- FL050 when QNH is 977 hPa (733mm mercury column) or above, but less than 1013 hPa (760mm mercury column);  
- FL060 when QNH is less than 977 hPa (733mm mercury column).

BEARINGS AND TRACKS ARE MAGNETIC  
ALTITUDES AND ELEVATIONS IN FEET  
DISTANCES IN KILOMETRES

CHANGE: New chart