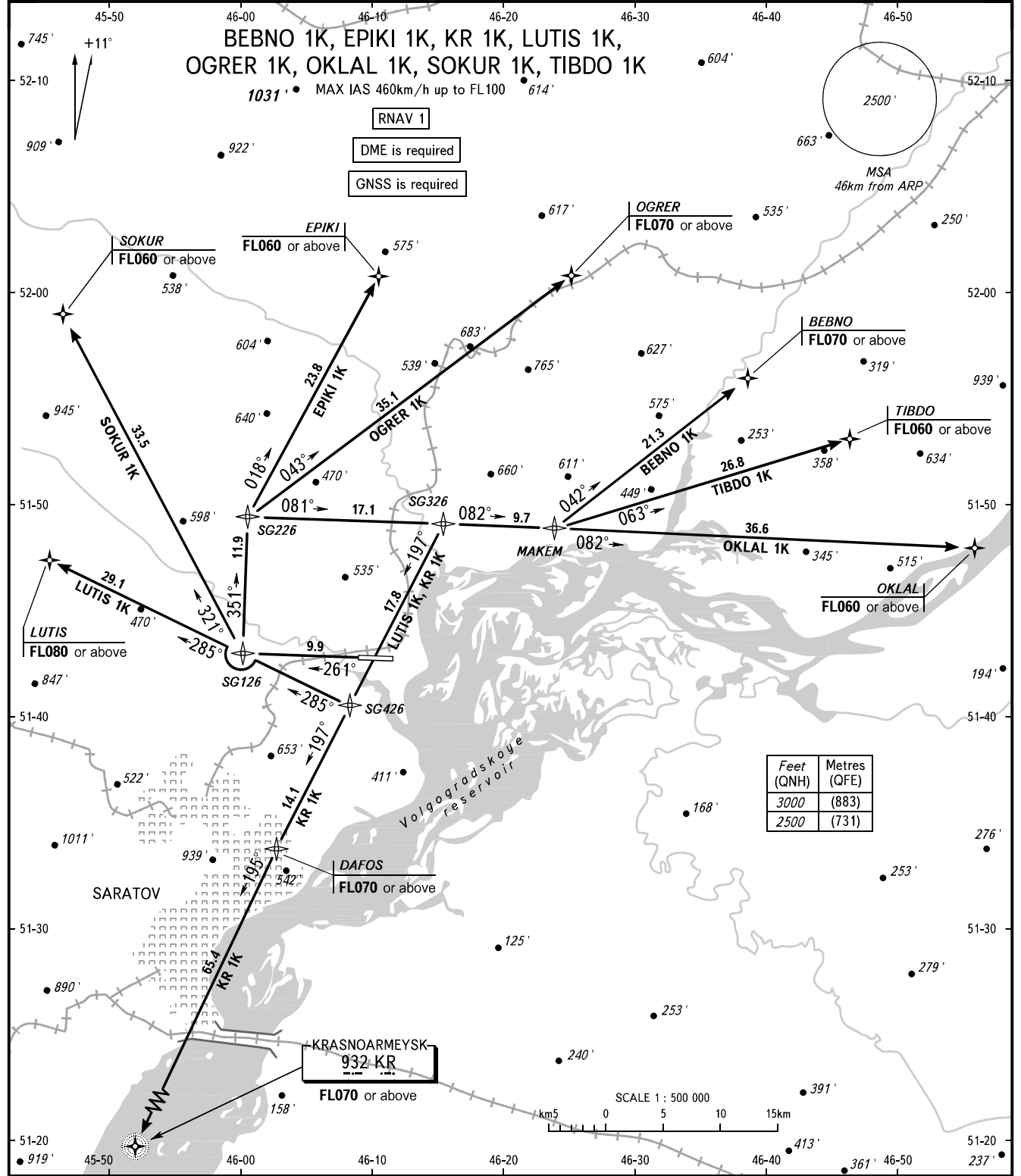


STANDARD DEPARTURE CHART
INSTRUMENT (SID) - ICAO

TRANSITION
ALTITUDE : 3000'

SARATOV, RUSSIA
GAGARIN
RNAV RWY 26



Feet (QNH)	Metres (QFE)
3000	(883)
2500	(731)

GAGARIN APPROACH 121.625
GAGARIN RADAR 130.300
GAGARIN TOWER 122.850

WARNING
The minimum climb gradients are as follows (required due to the airspace structure):
- 3.7% up to FL070 for SID OGRER 1K;
- 4.0% up to FL060 for SID EPIKI 1K;
- 4.2% up to FL060 for SID SOKUR 1K.

BEARINGS AND TRACKS ARE MAGNETIC
ALTITUDES AND ELEVATIONS IN FEET
DISTANCES IN KILOMETRES

CHANGE: New chart