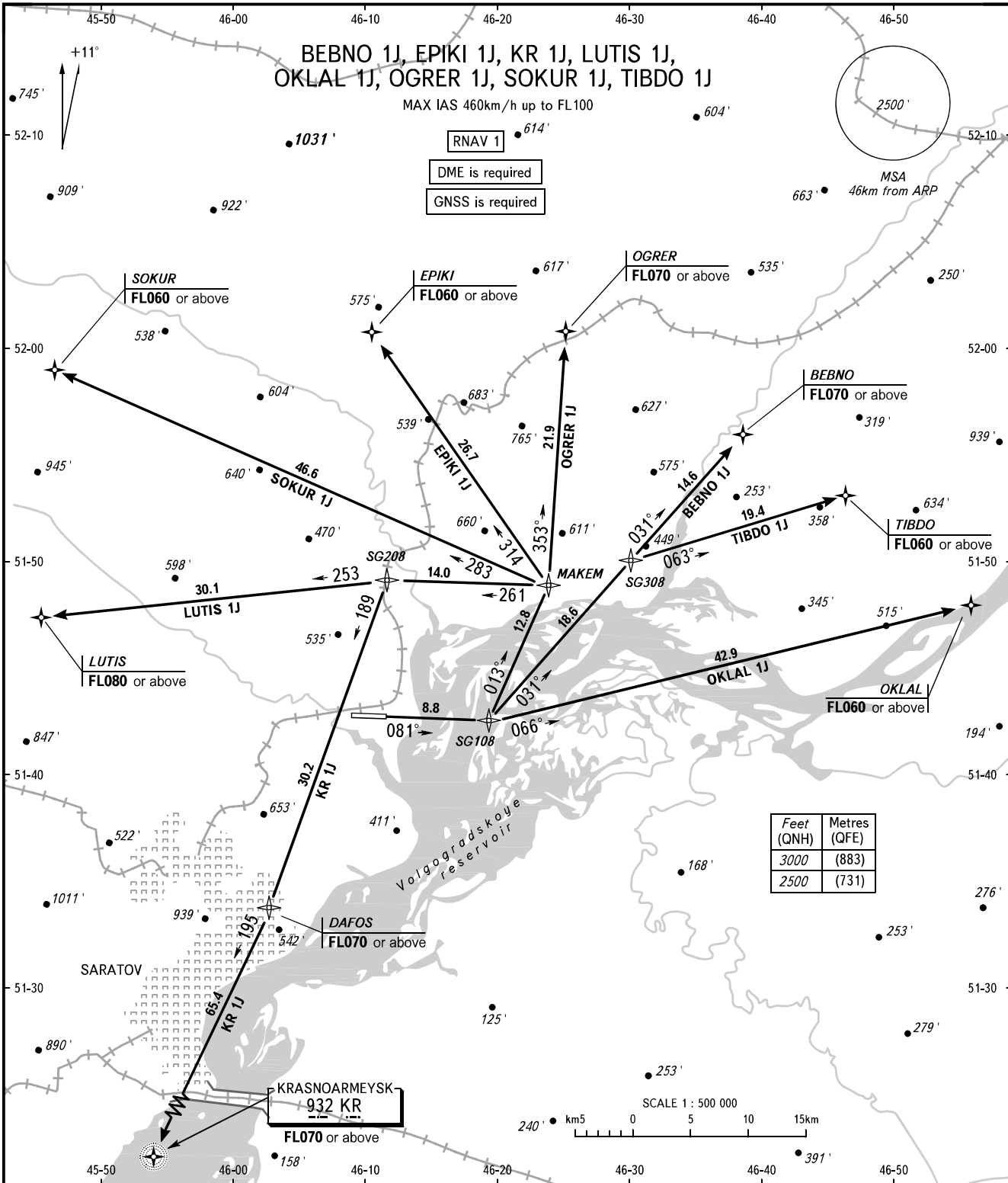


STANDARD DEPARTURE CHART
INSTRUMENT (SID) - ICAO

TRANSITION
ALTITUDE : 3000'

SARATOV, RUSSIA
GAGARIN
RNAV RWY 08



GAGARIN APPROACH 121.625
GAGARIN RADAR 130.300
GAGARIN TOWER 122.850

WARNING

The minimum climb gradients are as follows (required due to the airspace structure):

- 3.5% up to FL060 for SID OKLAL 1J;
- 3.7% up to FL080 for SID LUTIS 1J;
- 3.8% up to FL060 for SID EPIKI 1J;
- 3.9% up to FL060 for SID TIBDO 1J;
- 4.9% up to FL070 for SID OGRER 1J;
- 5.1% up to FL070 for SID BEBNO 1J.

BEARINGS AND TRACKS ARE MAGNETIC
ALTITUDES AND ELEVATIONS IN FEET
DISTANCES IN KILOMETRES