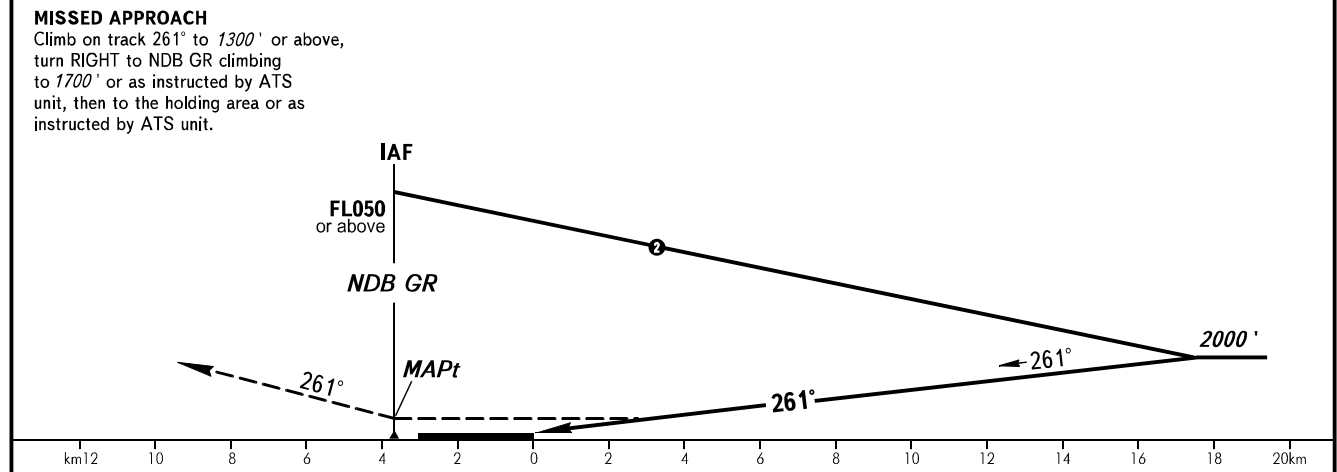
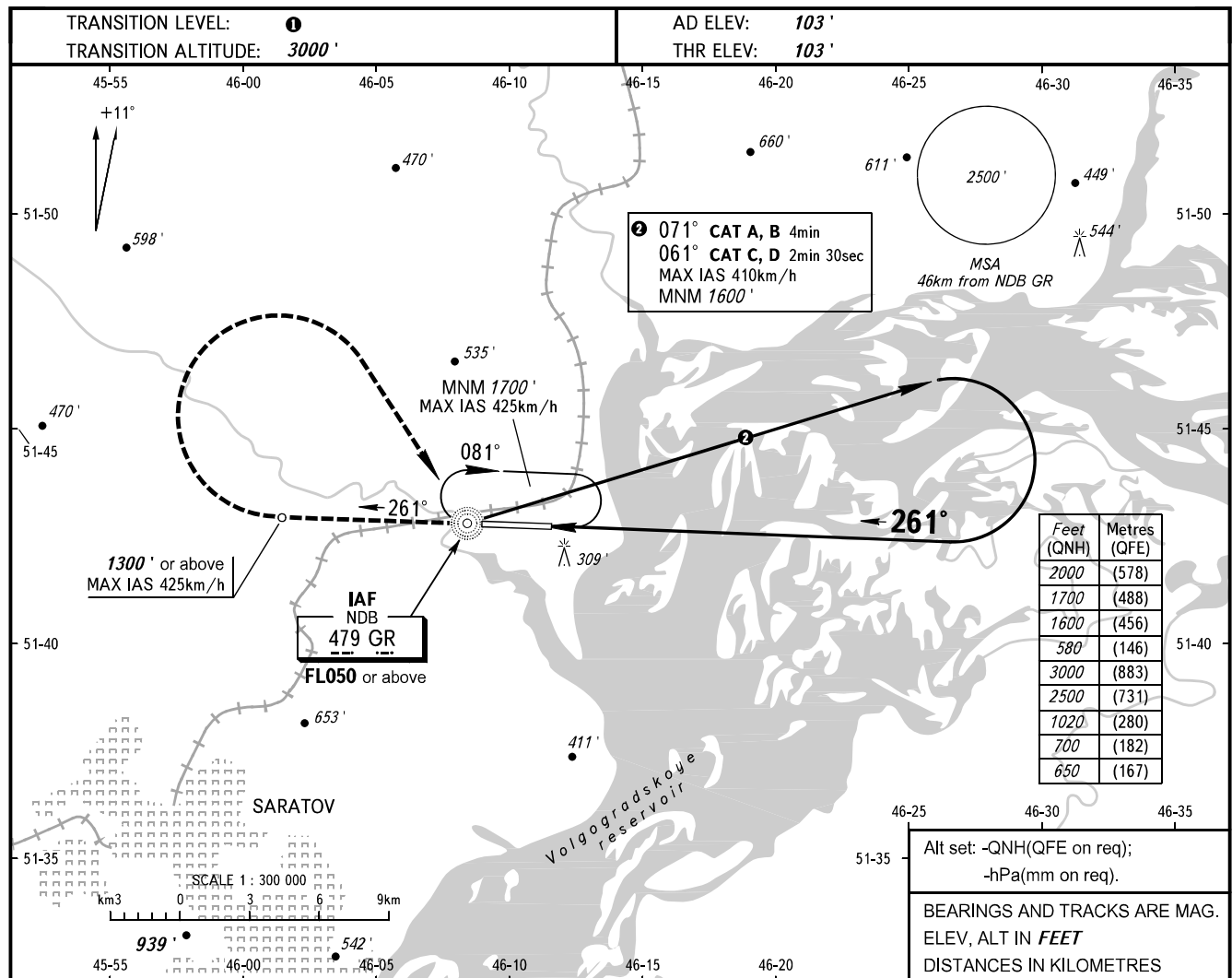


**INSTRUMENT  
APPROACH  
CHART - ICAO**

GAGARIN RADAR	130.300
GAGARIN TOWER	122.850

**SARATOV, RUSSIA  
GAGARIN  
NDB Y RWY 26**



OCA(H)		A	B	C	D
Straight-in	Approach	580' (480')	580' (480')	580' (480')	580' (480')
Circling		650' (550')	700' (600')	1020' (920')	1020' (920')

① **TRANSITION LEVEL:**  
- FL040 when QNH is 1013 hPa (760mm mercury column) or above;  
- FL050 when QNH is 977 hPa (733mm mercury column) or above, but less than 1013 hPa (760mm mercury column);  
- FL060 when QNH is less than 977 hPa (733mm mercury column).

MAPt at NDB GR. Timing not authorized for defining MAPt.

Visual manoeuvring south of AD is PROHIBITED.

CHANGE: New chart