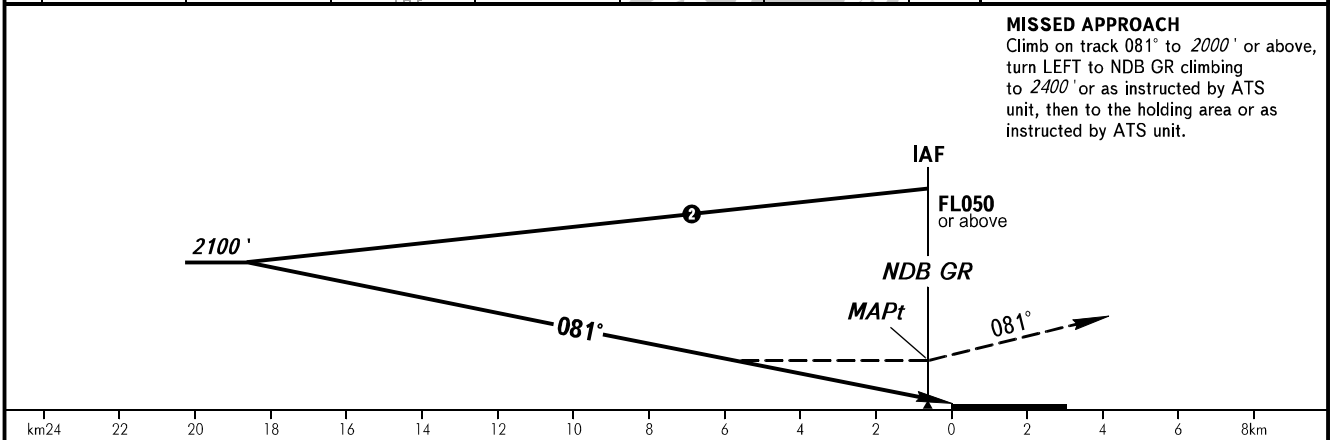
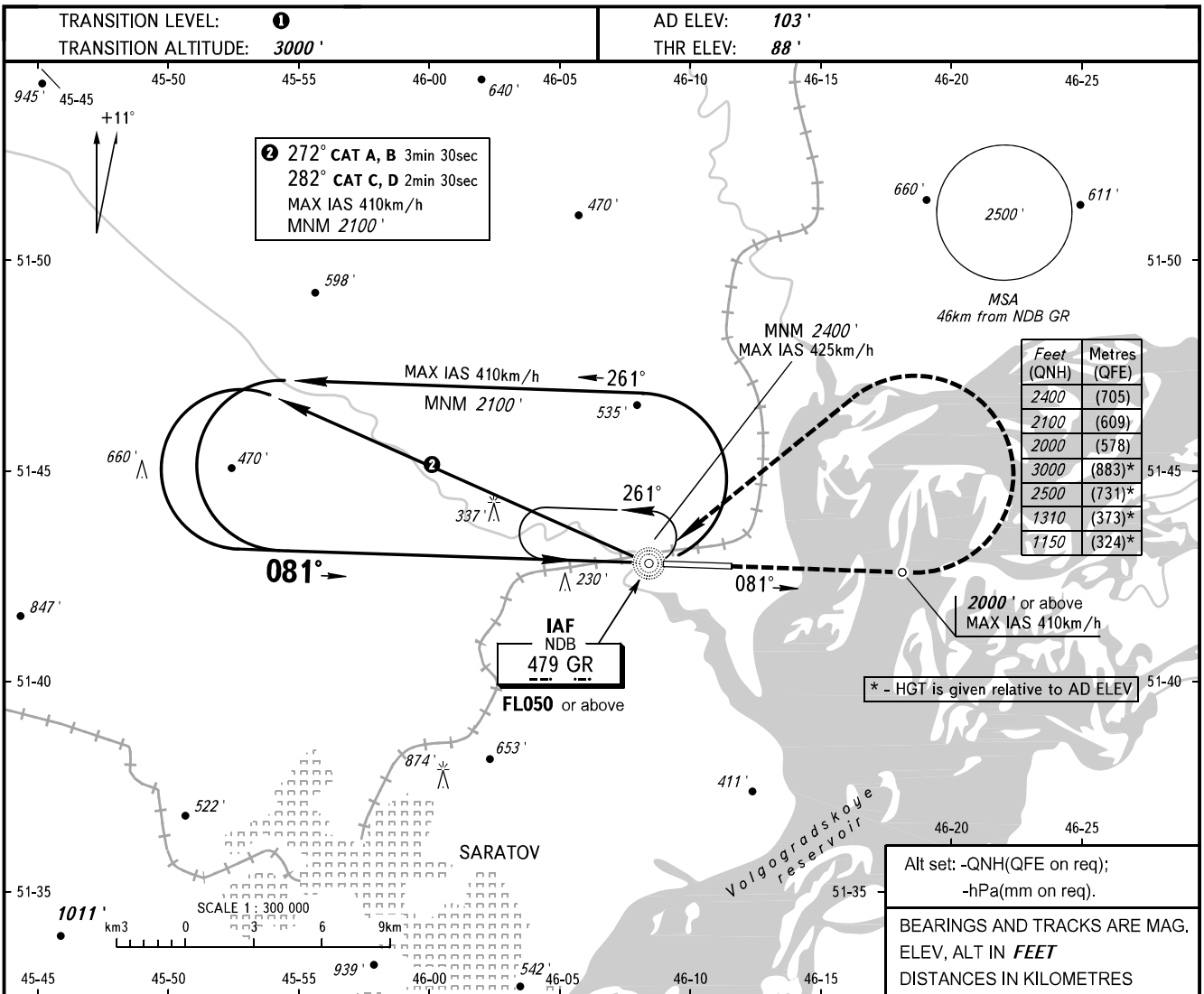


**INSTRUMENT
APPROACH
CHART - ICAO**

GAGARIN RADAR	130.300
GAGARIN TOWER	122.850

SARATOV, RUSSIA
GAGARIN
NDB Y RWY 08



OCA(H)		A	B	C	D
Straight-in Approach		1150' (1060')	1310' (1220')	1310' (1220')	1310' (1220')
Circling		1150' (1060')	1310' (1220')	1310' (1220')	1310' (1220')

① **TRANSITION LEVEL:**
- FL040 when QNH is 1013 hPa (760mm mercury column) or above;
- FL050 when QNH is 977 hPa (733mm mercury column) or above, but less than 1013 hPa (760mm mercury column);
- FL060 when QNH is less than 977 hPa (733mm mercury column).

MAPt at NDB GR. Timing not authorized for defining MAPt.

Visual manoeuvring south of AD is PROHIBITED.

253° 090°

CHANGE: New chart