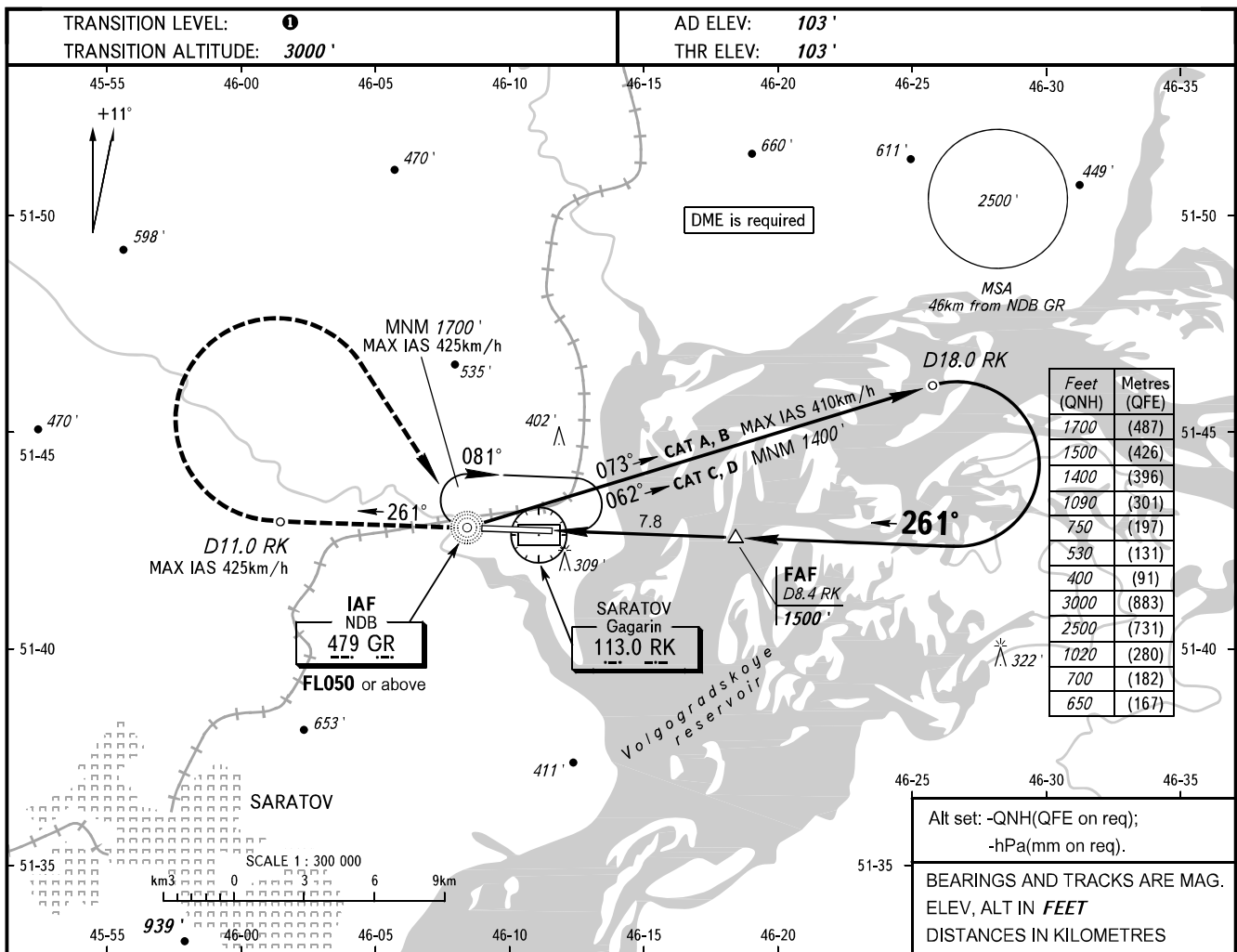


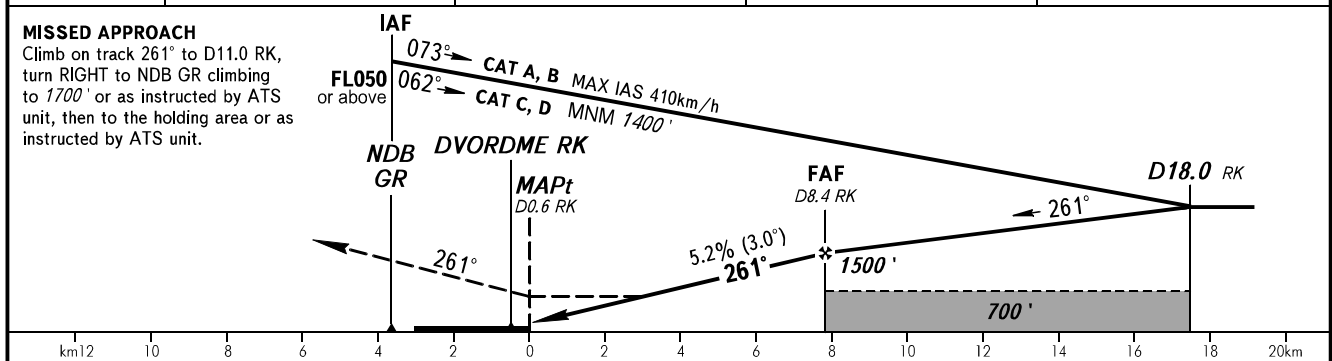
**INSTRUMENT
APPROACH
CHART - ICAO**

GAGARIN RADAR	130.300
GAGARIN TOWER	122.850

**SARATOV, RUSSIA
GAGARIN
NDB Z RWY 26**



DME RK	2.0	4.0	6.0	8.4
ALTITUDE	400'	750'	1090'	1500'



OCA(H)	A	B	C	D
Straight-in	530' (430')	530' (430')	530' (430')	530' (430')
Approach				
Circling	650' (550')	700' (600')	1020' (920')	1020' (920')

① **TRANSITION LEVEL:**
 - FL040 when QNH is 1013 hPa (760mm mercury column) or above;
 - FL050 when QNH is 977 hPa (733mm mercury column) or above, but less than 1013 hPa (760mm mercury column);
 - FL060 when QNH is less than 977 hPa (733mm mercury column).

MAPt at D0.6 RK. Timing not authorized for defining MAPt.

Visual manoeuvring south of AD is PROHIBITED.

GROUND SPEED	km/h	150	180	210	240	270	300	330	360	390	420	450
RATE OF DESCENT	m/s	2.2	2.6	3.0	3.5	3.9	4.3	4.8	5.2	5.6	6.1	6.5
	ft/min	427	512	597	682	768	853	938	1024	1109	1194	1280