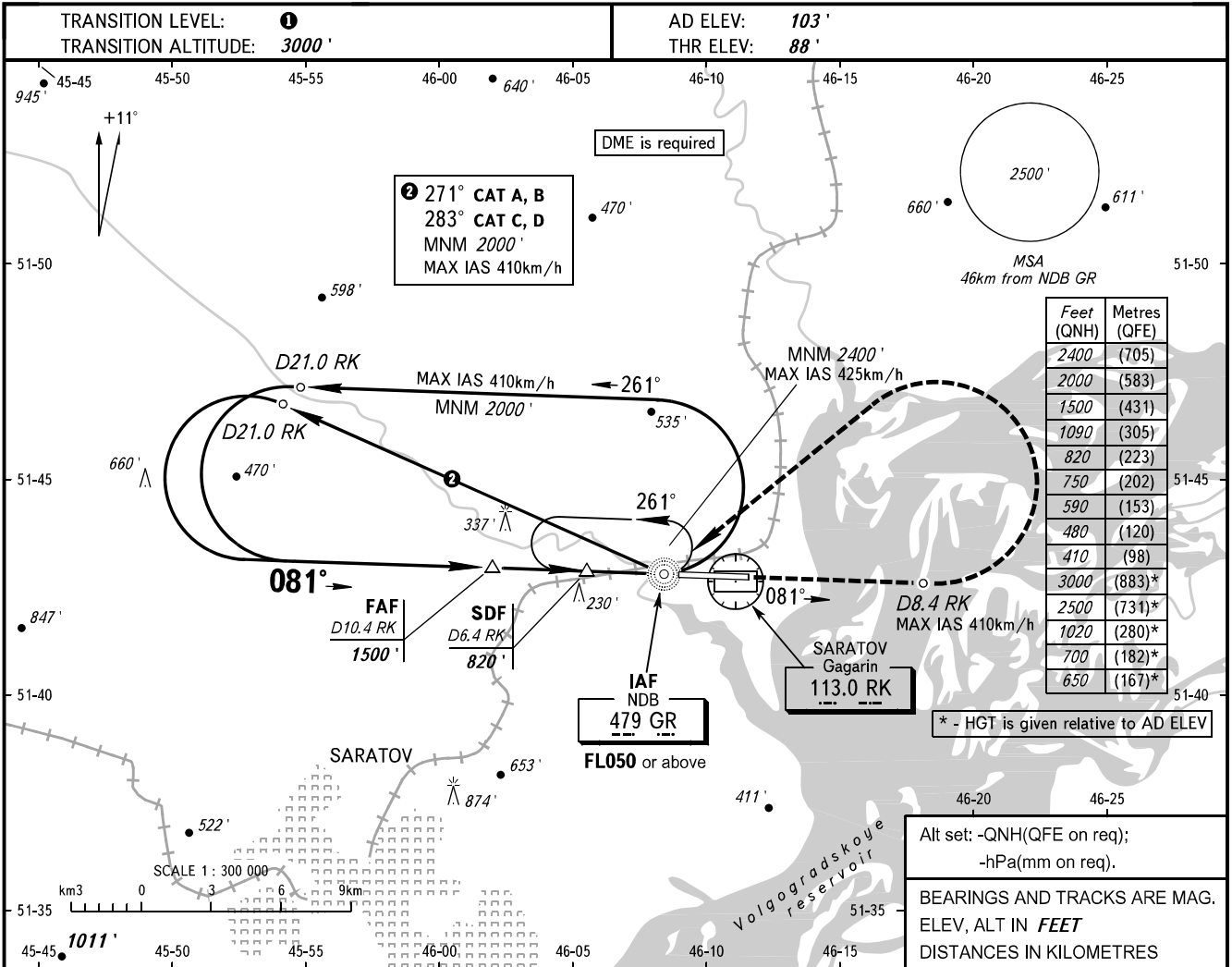


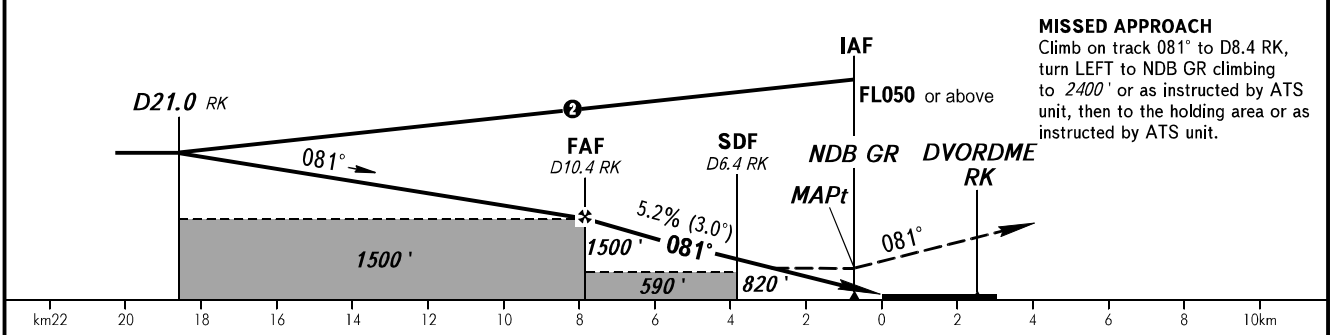
**INSTRUMENT
APPROACH
CHART - ICAO**

GAGARIN RADAR	130.300
GAGARIN TOWER	122.850

SARATOV, RUSSIA
GAGARIN
NDB Z RWY 08



DME RK	10.4	8.0	6.0	4.0
ALTITUDE	1500'	1090'	750'	410'



MISSED APPROACH
Climb on track 081° to D8.4 RK, turn LEFT to NDB GR climbing to 2400' or as instructed by ATS unit, then to the holding area or as instructed by ATS unit.

OCA(H)		A	B	C	D								
Straight-in Approach	With SDF	480' (390')	480' (390')	480' (390')	480' (390')								
	WO SDF	590' (500')	590' (500')	590' (500')	590' (500')								
Circling		650' (550')	700' (600')	1020' (920')	1020' (920')								
GROUND SPEED		km/h	150	180	210	240	270	300	330	360	390	420	450
RATE OF DESCENT		m/s	2.2	2.6	3.0	3.5	3.9	4.3	4.8	5.2	5.6	6.1	6.5
		ft/min	427	512	597	682	768	853	938	1024	1109	1194	1280

1 TRANSITION LEVEL:
 - FL040 when QNH is 1013 hPa (760mm mercury column) or above;
 - FL050 when QNH is 977 hPa (733mm mercury column) or above, but less than 1013 hPa (760mm mercury column);
 - FL060 when QNH is less than 977 hPa (733mm mercury column).
 MAPt at NDB GR. Timing not authorized for defining MAPt.
 Visual manoeuvring south of AD is PROHIBITED.

CHANGE: New chart