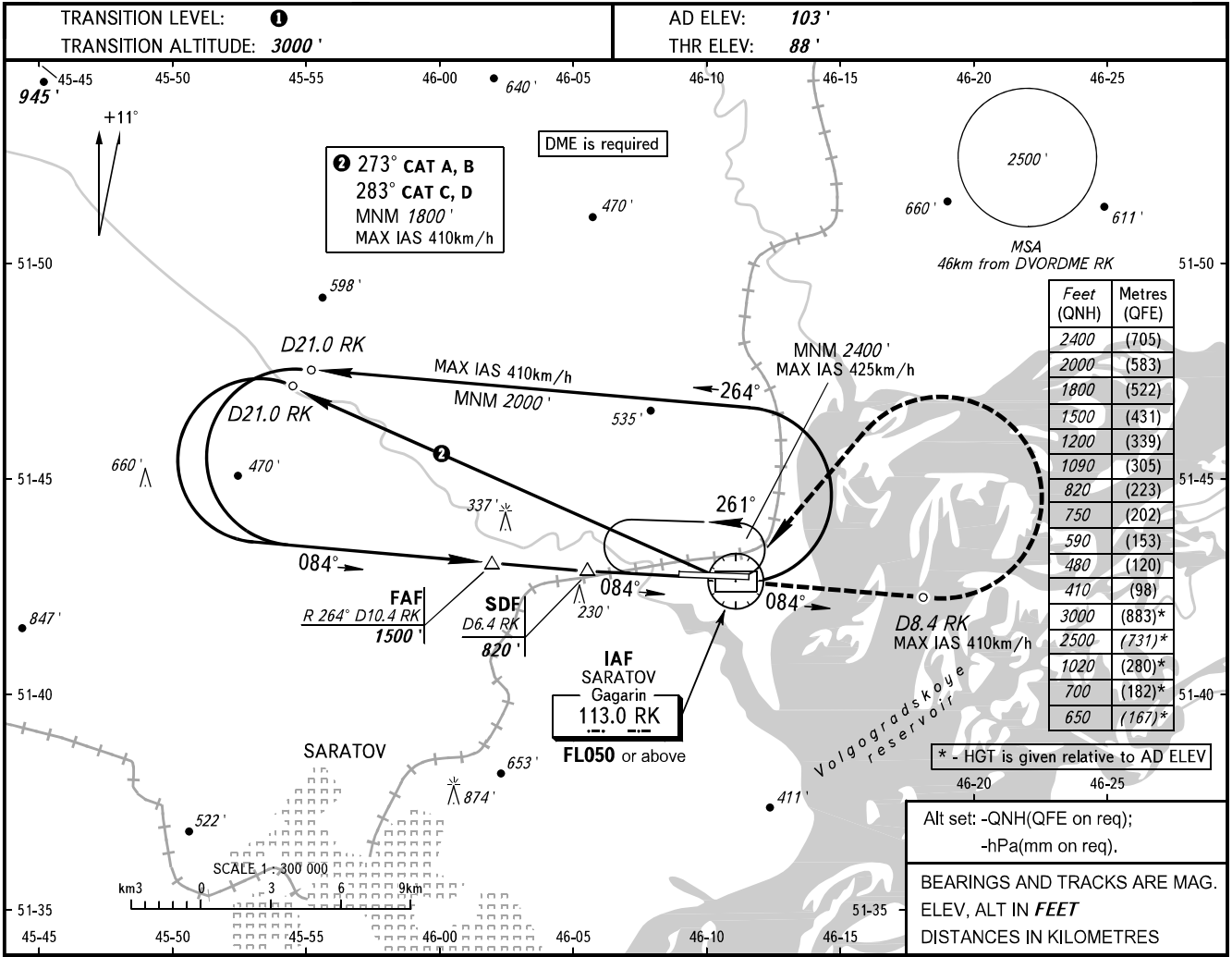


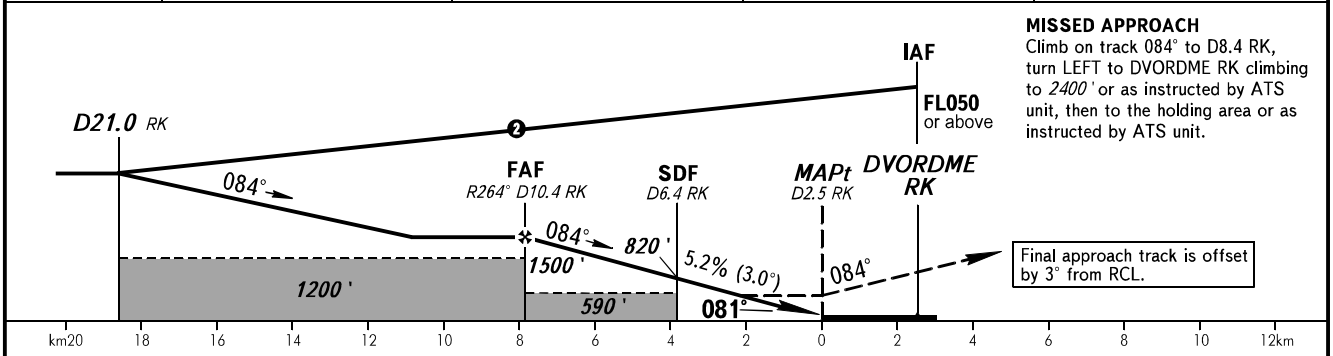
**INSTRUMENT
APPROACH
CHART - ICAO**

| | |
|---------------|---------|
| GAGARIN RADAR | 130.300 |
| GAGARIN TOWER | 122.850 |

SARATOV, RUSSIA
GAGARIN
DVOR RWY 08



| | | | | |
|----------|-------|-------|------|------|
| DME RK | 10.4 | 8.0 | 6.0 | 4.0 |
| ALTITUDE | 1500' | 1090' | 750' | 410' |



| OCA(H) | | A | B | C | D | ① TRANSITION LEVEL: | | | | | | | | | | |
|-----------------|----------|-------------|-------------|--------------|--------------|---|-----|-----|-----|------|------|------|------|--|--|--|
| Straight-in | With SDF | 480' (390') | 480' (390') | 480' (390') | 480' (390') | - FL040 when QNH is 1013 hPa (760mm mercury column) or above; | | | | | | | | | | |
| | WO SDF | 590' (500') | 590' (500') | 590' (500') | 590' (500') | - FL050 when QNH is 977 hPa (733mm mercury column) or above, but less than 1013 hPa (760mm mercury column); | | | | | | | | | | |
| Approach | | | | | | - FL060 when QNH is less than 977 hPa (733mm mercury column). | | | | | | | | | | |
| | | | | | | MAPt at D2.5 RK. Timing not authorized for defining MAPt. | | | | | | | | | | |
| Circling | | 650' (550') | 700' (600') | 1020' (920') | 1020' (920') | Visual manoeuvring south of AD is PROHIBITED. | | | | | | | | | | |
| GROUND SPEED | | km/h | 150 | 180 | 210 | 240 | 270 | 300 | 330 | 360 | 390 | 420 | 450 | | | |
| RATE OF DESCENT | | m/s | 2.2 | 2.6 | 3.0 | 3.5 | 3.9 | 4.3 | 4.8 | 5.2 | 5.6 | 6.1 | 6.5 | | | |
| | | ft/min | 427 | 512 | 597 | 682 | 768 | 853 | 938 | 1024 | 1109 | 1194 | 1280 | | | |

CHANGE: New chart