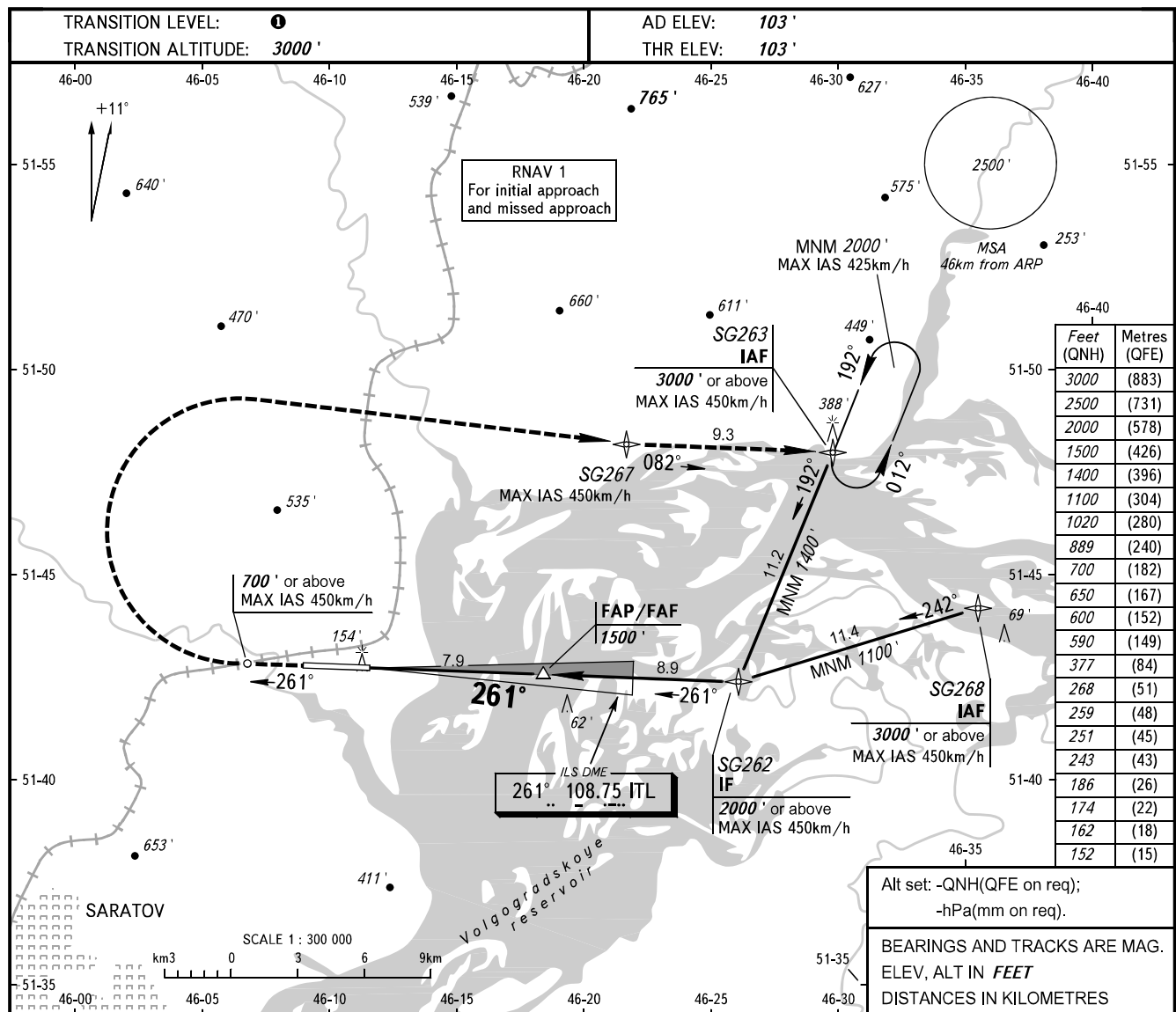


**INSTRUMENT
APPROACH
CHART - ICAO**

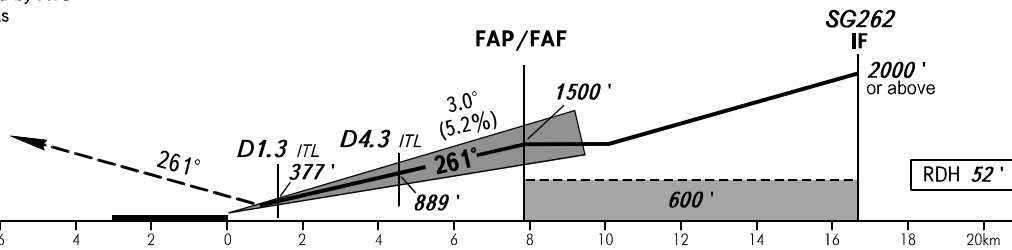
GAGARIN RADAR	130.300
GAGARIN TOWER	122.850

**SARATOV, RUSSIA
GAGARIN
ILS X CAT I, LOC X RWY 26**



MISSED APPROACH

Climb straight ahead to 700' or above, turn RIGHT to SG267, then to SG263 climbing to 3000' or as instructed by ATS unit, then to the holding area or as instructed by ATS unit.

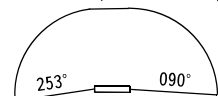


OCA(H)		A	B	C	D
Straight-in	CAT I	243' (140')	251' (148')	259' (156')	268' (165')
	LOC	590' (480')	590' (480')	590' (480')	590' (480')
Approach					
Circling		650' (550')	700' (600')	1020' (920')	1020' (920')

1 TRANSITION LEVEL:
- FLO40 when QNH is 1013 hPa (760mm mercury column) or above;
- FLO50 when QNH is 977 hPa (733mm mercury column) or above, but less than 1013 hPa (760mm mercury column);
- FLO60 when QNH is less than 977 hPa (733mm mercury column).

WARNING

Zero range of DME ITL is indicated at RWY 26 THR.



Visual manoeuvring south of AD is PROHIBITED.