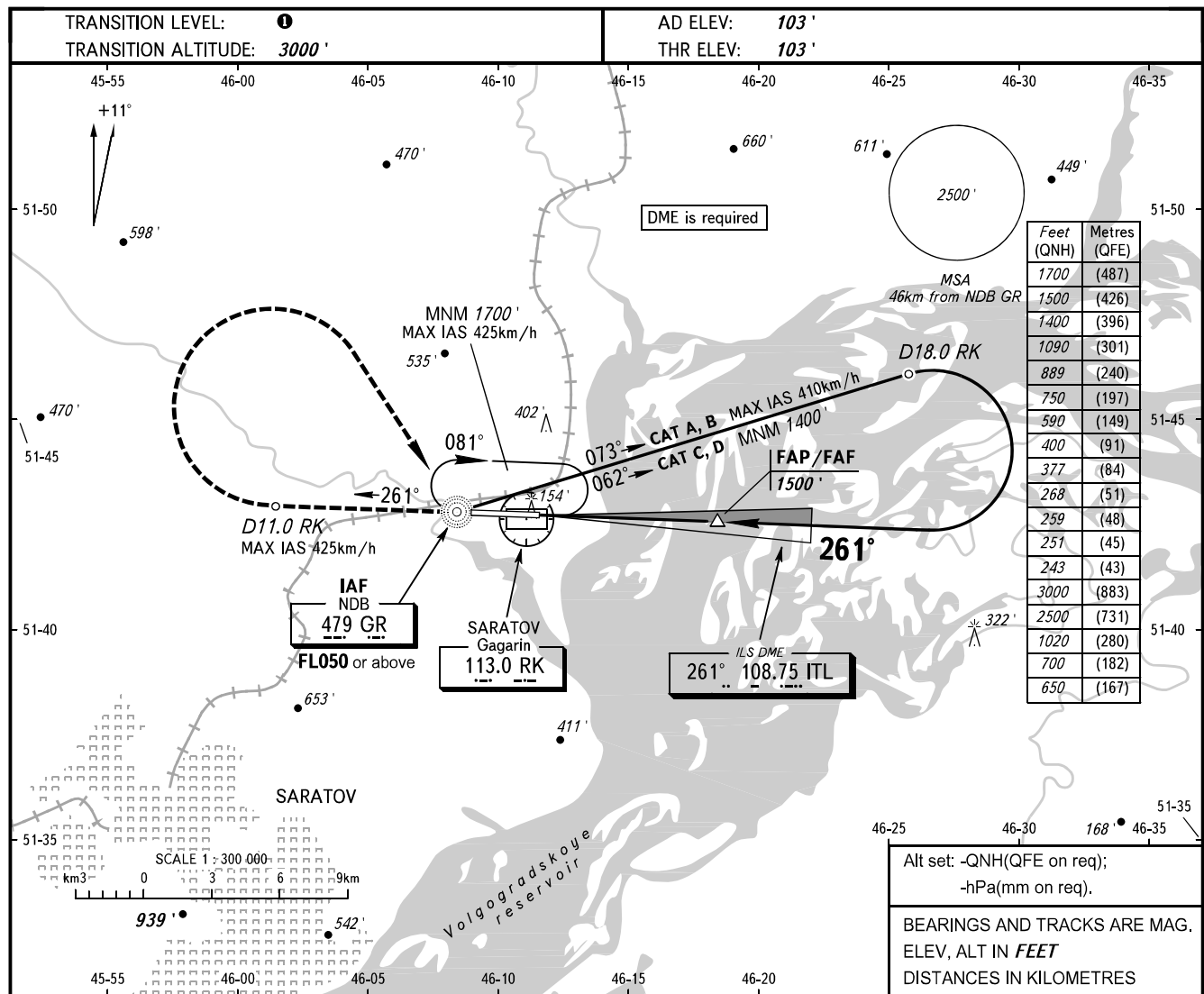


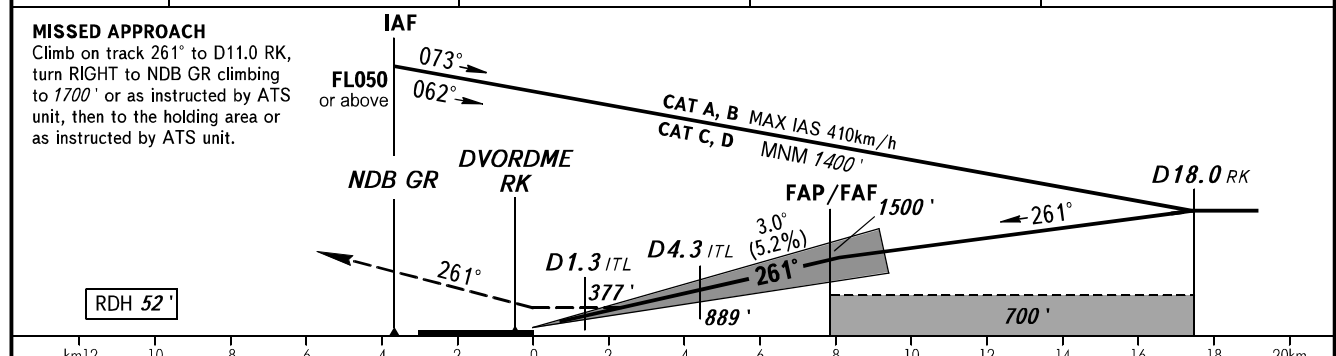
**INSTRUMENT
APPROACH
CHART - ICAO**

GAGARIN RADAR 130.300
GAGARIN TOWER 122.850

**SARATOV, RUSSIA
GAGARIN
ILS Z CAT I, LOC Z RWY 26**



DME RK	2.0	4.0	6.0	8.4
ALTITUDE	400'	750'	1090'	1500'



OCA(H)		A	B	C	D
Straight-in	CAT I	243' (140')	251' (148')	259' (156')	268' (165')
	LOC	590' (480')	590' (480')	590' (480')	590' (480')
Approach					
Circling		650' (550')	700' (600')	1020' (920')	1020' (920')

TRANSITION LEVEL:
 - FL040 when QNH is 1013 hPa (760mm mercury column) or above;
 - FL050 when QNH is 977 hPa (733mm mercury column) or above, but less than 1013 hPa (760mm mercury column);
 - FL060 when QNH is less than 977 hPa (733mm mercury column).

WARNING
Zero range of DME ITL is indicated at RWY 26 THR.

Visual manoeuvring south of AD is PROHIBITED.

Change: New chart